

CHSY2 Rabbit pAb

CatalogNo: YT0924

Key Features

Host Species

- Rabbit

Reactivity

- Human, Mouse, Rat

Applications

- WB, IHC, IF, ELISA

MW

- 85kD (Observed)

Isotype

- IgG

Recommended Dilution Ratios

WB 1:500-1:2000

IHC 1:100-1:300

IF 1:200-1:1000

ELISA 1:40000

Not yet tested in other applications.

Storage

Storage*

-15°C to -25°C/1 year (Do not lower than -25°C)

Formulation

Liquid in PBS containing 50% glycerol, 0.5% BSA and 0.02% sodium azide.

Basic Information

Clonality

Polyclonal

Immunogen Information

Immunogen

The antiserum was produced against synthesized peptide derived from human CHSY2. AA range: 631-680

Specificity

CHSY2 Polyclonal Antibody detects endogenous levels of CHSY2 protein.

Target Information

Gene name CHPF

Protein Name Chondroitin sulfate synthase 2

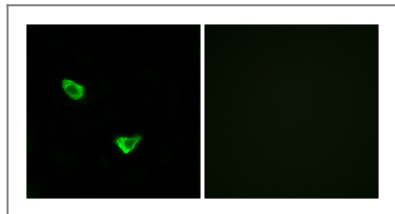
Organism	Gene ID	UniProt ID
Human	79586 ;	Q8IZ52 ;
Mouse	74241 ;	Q6IQX7 ;

Cellular Localization [Isoform 1]: Golgi apparatus, Golgi stack membrane ; Single-pass type II membrane protein . Cytoplasm, cytosol . ; [Isoform 3]: Cytoplasm, cytosol . Mitochondrion . ; [Isoform 2]: Mitochondrion matrix .

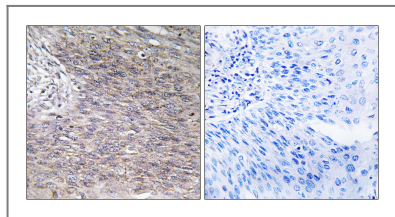
Tissue specificity Ubiquitous. Highly expressed in pancreas, ovary, brain, heart, skeletal muscle, colon, kidney, liver, stomach, spleen and placenta. ; [Isoform 2]: Expressed in brain, spleen, ovary, testis, lung and peripheral mononuclear cells. ; [Isoform 3]: Also ubiquitous.

Function	Enzyme
Catalytic activity:UDP-alpha-D-glucuronate + N-acetyl-beta-D-galactosaminyl-(1->4)-beta-D-glucuronosyl-proteoglycan = UDP + beta-D-glucuronosyl-(1->3)-N-acetyl-beta-D-galactosaminyl-(1->4)-beta-D-glucuronosyl-proteoglycan.,Catalytic activity:UDP-N-acetyl-D-galactosamine + beta-D-glucuronosyl-(1->3)-N-acetyl-beta-D-galactosaminyl-proteoglycan = UDP + N-acetyl-beta-D-galactosaminyl-(1->4)-beta-D-glucuronosyl-(1->3)-N-acetyl-beta-D-galactosaminyl-proteoglycan.,cofactor:Divalent cations. Highest activities are measured with manganese. Can also utilize cobalt.,Function:Has both beta-1,3-glucuronic acid and beta-1,4-N-acetylglactosamine transferase activity. Transfers glucuronic acid (GlcUA) from UDP-GlcUA and N-acetylglactosamine (GalNAc) from UDP-GalNAc to the non-reducing end of the elongating chondroitin polymer.,online information:GlycoGene database,PTM:Phosphorylated upon DNA damage, probably by ATM or ATR.,similarity:Belongs to the chondroitin N-acetylglactosaminyltransferase family.,subunit:Binds CHSY1.,tissue specificity:Ubiquitous. Highly expressed in pancreas, ovary, brain, heart, skeletal muscle, colon, kidney, liver, stomach, small intestine and placenta.,	CHSY1

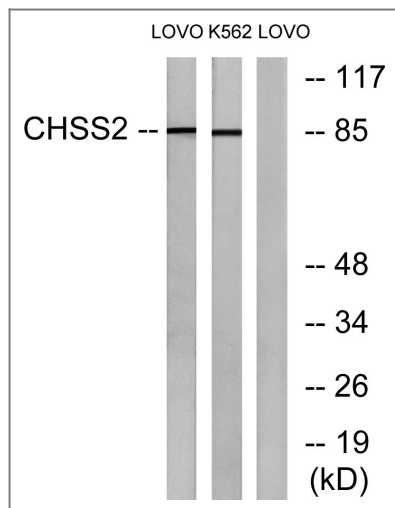
Validation Data



Immunofluorescence analysis of MCF7 cells, using CHSY2 Antibody. The picture on the right is blocked with the synthesized peptide.



Immunohistochemistry analysis of paraffin-embedded human cervix carcinoma tissue, using CHSY2 Antibody. The picture on the right is blocked with the synthesized peptide.



Western blot analysis of lysates from LOVO and K562 cells, using CHSY2 Antibody. The lane on the right is blocked with the synthesized peptide.

Contact information

Orders: order@immunoway.com
 Support: tech@immunoway.com
 Telephone: 877-594-3616 (Toll Free), 408-747-0185
 Website: <http://www.immunoway.com>
 Address: 2200 Ringwood Ave San Jose, CA 95131 USA



Please scan the QR code to access additional product information:
CHSY2 Rabbit pAb

For Research Use Only. Not for Use in Diagnostic Procedures.

[Antibody](#) | [ELISA Kits](#) | [Protein](#) | [Reagents](#)