

CHSY1 Rabbit pAb

CatalogNo: YT0923

Key Features

Host Species

- Rabbit

Reactivity

- Human, Mouse

Applications

- WB, IHC, IF, ELISA

MW

- 91kD (Observed)

Isotype

- IgG

Recommended Dilution Ratios

WB 1:500-1:2000

IHC 1:100-1:300

ELISA 1:10000

IF 1:50-200

Storage

Storage*

-15°C to -25°C/1 year (Do not lower than -25°C)

Formulation

Liquid in PBS containing 50% glycerol, 0.5% BSA and 0.02% sodium azide.

Basic Information

Clonality

Polyclonal

Immunogen Information

Immunogen

The antiserum was produced against synthesized peptide derived from human CHSY1. AA range: 341-390

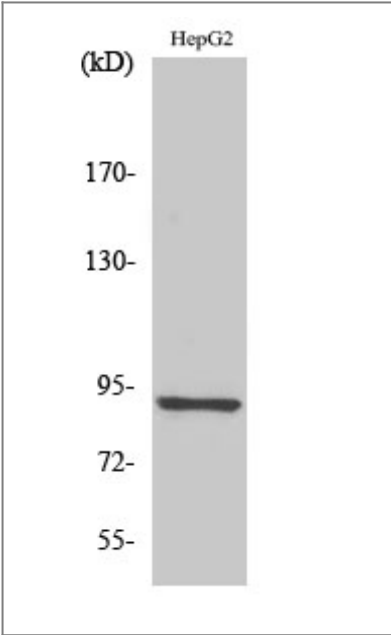
Specificity

CHSY1 Polyclonal Antibody detects endogenous levels of CHSY1 protein.

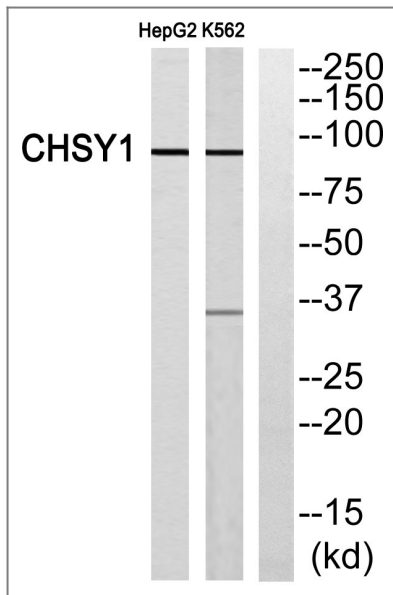
Target Information

Gene name	CHSY1		
Protein Name	Chondroitin sulfate synthase 1		
	Organism	Gene ID	UniProt ID
	Human	22856;	Q86X52;
	Mouse	269941;	Q6ZQ11;
Cellular Localization	Golgi apparatus, Golgi stack membrane ; Single-pass type II membrane protein . Secreted .		
Tissue specificity	Ubiquitous, with the highest levels in placenta. Detected at low levels in brain, heart, skeletal muscle, colon, thymus, spleen, kidney, liver, adrenal gland, mammary gland, stomach, small intestine, lung and peripheral blood leukocytes.		
Function	Catalytic activity:UDP-alpha-D-glucuronate + N-acetyl-beta-D-galactosaminyI-(1->4)-beta-D-glucuronosyl-proteoglycan = UDP + beta-D-glucuronosyl-(1->3)-N-acetyl-beta-D-galactosaminyI-(1->4)-beta-D-glucuronosyl-proteoglycan.,Catalytic activity:UDP-N-acetyl-D-galactosamine + beta-D-glucuronosyl-(1->3)-N-acetyl-beta-D-galactosaminyI-proteoglycan = UDP + N-acetyl-beta-D-galactosaminyI-(1->4)-beta-D-glucuronosyl-(1->3)-N-acetyl-beta-D-galactosaminyI-proteoglycan.,cofactor:Divalent cations. Highest activities are measured with cobalt, manganese and cadmium.,Function:Has both beta-1,3-glucuronic acid and beta-1,4-N-acetylglactosamine transferase activity. Transfers glucuronic acid (GlcUA) from UDP-GlcUA and N-acetylglactosamine (GalNAc) from UDP-GalNAc to the non-reducing end of the elongating chondroitin polymer.,online information:Chondroitin sulfate synthase 1,online information:GlycoGene database,similarity:Belongs to the chondroitin N-acetylglactosaminyItransferase family.,subunit:Binds CHPF.,tissue specificity:Ubiquitous, with the highest levels in placenta. Detected at low levels in brain, heart, skeletal muscle, colon, thymus, spleen, kidney, liver, adrenal gland, mammary gland, stomach, small intestine, lung and peripheral blood leukocytes.,		

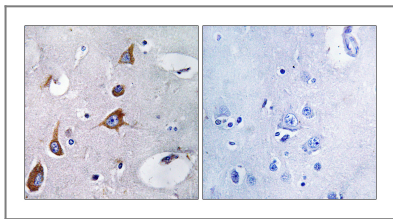
Validation Data



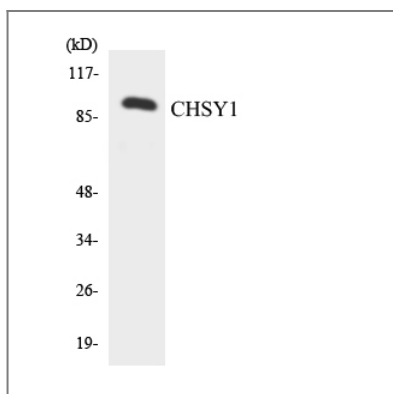
Western Blot analysis of various cells using CHSY1 Polyclonal Antibody



Western blot analysis of CHSY1 Antibody. The lane on the right is blocked with the CHSY1 peptide.



Immunohistochemistry analysis of paraffin-embedded human brain, using CHSY1 Antibody. The lane on the right is blocked with the CHSY1 peptide.



Western blot analysis of the lysates from HepG2 cells using CHSY1 antibody.

Contact information

Orders: order@immunoway.com
 Support: tech@immunoway.com
 Telephone: 877-594-3616 (Toll Free), 408-747-0185
 Website: <http://www.immunoway.com>
 Address: 2200 Ringwood Ave San Jose, CA 95131 USA



Please scan the QR code to access additional product information:
CHSY1 Rabbit pAb