

## CHST2 Rabbit pAb

CatalogNo: YT0920

### Key Features

**Host Species**

- Rabbit

**Reactivity**

- Human, Mouse

**Applications**

- WB, ELISA

**MW**

- 58kD (Observed)

**Isotype**

- IgG

### Storage

**Storage\*** -15°C to -25°C/1 year (Do not lower than -25°C)**Formulation** Liquid in PBS containing 50% glycerol, 0.5% BSA and 0.02% sodium azide.

### Recommended Dilution Ratios

**WB 1:500-1:2000****ELISA 1:10000****Not yet tested in other applications.**

### Basic Information

**Clonality** Polyclonal

### Immunogen Information

**Immunogen** The antiserum was produced against synthesized peptide derived from human CHST2. AA range:1-50**Specificity** CHST2 Polyclonal Antibody detects endogenous levels of CHST2 protein.

### Target Information

**Gene name** CHST2

**Protein Name** Carbohydrate sulfotransferase 2

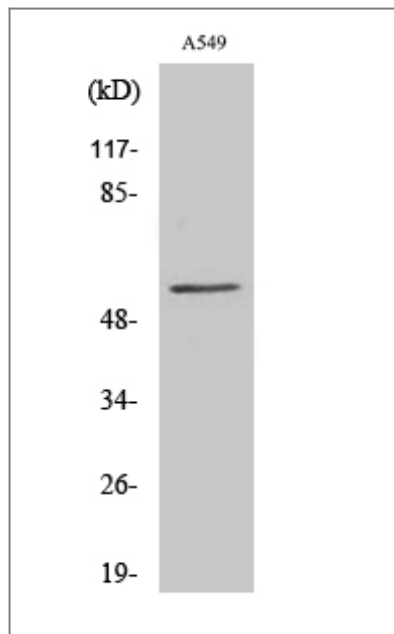
Organism	Gene ID	UniProt ID
Human	<a href="#">9435</a> ;	<a href="#">Q9Y4C5</a> ;
Mouse		<a href="#">Q80WV3</a> ;

**Cellular Localization** Golgi apparatus, trans-Golgi network membrane ; Single-pass type II membrane protein .

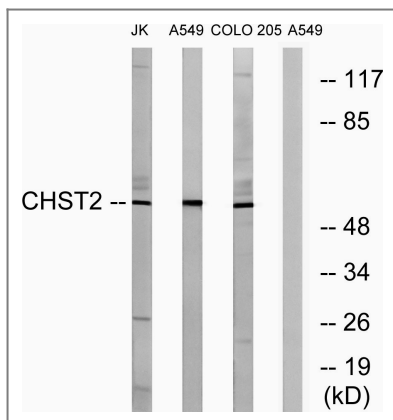
**Tissue specificity** Widely expressed. Highly expressed in bone marrow, peripheral blood leukocytes, spleen, brain, spinal cord, ovary and placenta. Expressed by high endothelial cells (HEVs) and leukocytes.

**Function** Caution:It is uncertain whether Met-1 or Met-48 is the initiator.,Function:Catalyzes the transfer of sulfate to position 6 of non-reducing N-acetylglucosamine (GlcNAc) residues within keratan-like structures on N-linked glycans and within mucin-associated glycans that can ultimately serve as L-selectin ligands. L-selectin ligands are present in high endothelial cells (HEVs) and play a central role in lymphocyte homing at sites of inflammation. Participates in biosynthesis of L-selectin ligand sialyl 6-sulfo Lewis X and in lymphocyte homing to Peyer patches. Has no activity toward O-linked sugars. Its substrate specificity may be influenced by its subcellular location. Sulfates GlcNAc residues at terminal, non-reducing ends of oligosaccharide chains.,induction:Up-regulated upon cytokine activation.,online information:GlycoGene database,similarity:Belongs to the sulfotransferase 1 family. Gal/GlcNAc/GalNAc subfamily.,subunit:Homodimer; disulfide-linked. Homodimerization is not essential for enzyme activity.,tissue specificity:Widely expressed. Highly expressed in bone marrow, peripheral blood leukocytes, spleen, brain, spinal cord, ovary and placenta. Expressed by high endothelial cells (HEVs) and leukocytes.,

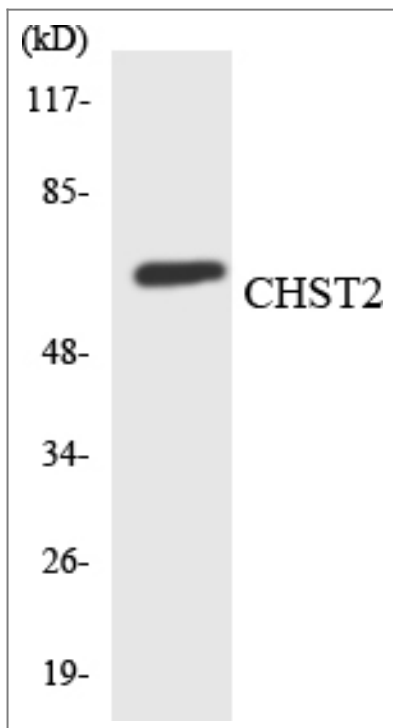
## Validation Data



Western Blot analysis of various cells using CHST2 Polyclonal Antibody



Western blot analysis of lysates from A549, COLO, and Jurkat cells, using CHST2 Antibody. The lane on the right is blocked with the synthesized peptide.



Western blot analysis of the lysates from K562 cells using CHST2 antibody.

## Contact information

Orders: [order@immunoway.com](mailto:order@immunoway.com)  
 Support: [tech@immunoway.com](mailto:tech@immunoway.com)  
 Telephone: 877-594-3616 (Toll Free), 408-747-0185  
 Website: <http://www.immunoway.com>  
 Address: 2200 Ringwood Ave San Jose, CA 95131 USA



Please scan the QR code to access additional product information:  
**CHST2 Rabbit pAb**