

CHRAC15 Rabbit pAb

CatalogNo: YT0917

Key Features

Host Species

- Rabbit

Reactivity

- Human, Mouse

Applications

- IHC, IF, ELISA

MW

- 15kD (Calculated)

Isotype

- IgG

Recommended Dilution Ratios

IHC 1:100-1:300

ELISA 1:5000

IF 1:50-200

Storage

Storage*

-15°C to -25°C/1 year (Do not lower than -25°C)

Formulation

Liquid in PBS containing 50% glycerol, 0.5% BSA and 0.02% sodium azide.

Basic Information

Clonality

Polyclonal

Immunogen Information

Immunogen

The antiserum was produced against synthesized peptide derived from human CHRC1. AA range: 81-130

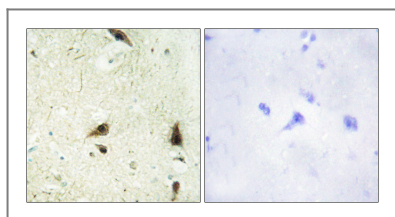
Specificity

CHRAC15 Polyclonal Antibody detects endogenous levels of CHRAC15 protein.

Target Information

Gene name	CHRAC1		
Protein Name	Chromatin accessibility complex protein 1		
	Organism	Gene ID	UniProt ID
	Human	54108 ;	Q9NRG0 ;
	Mouse	93696 ;	Q9JKP8 ;
Cellular Localization	Nucleus .		
Tissue specificity	Expressed in heart, brain, placenta, lung, liver, skeletal muscle, kidney and pancreas.		
Function	Function:Forms a complex with DNA polymerase epsilon subunit POLE3 and binds naked DNA, which is then incorporated into chromatin, aided by the nucleosome remodeling activity of ISWI/SNF2H and ACF1.,subunit:Interacts with POLE3. Together with POLE3, ACF1 and ISWI/SNF2H proteins, it forms the ISWI chromatin-remodeling complex, CHRAC.,tissue specificity:Expressed in all tissues tested, including, heart, brain, placenta, lung, liver, skeletal muscle, kidney and pancreas.,		

Validation Data



Immunohistochemistry analysis of paraffin-embedded human brain tissue, using CHRC1 Antibody. The picture on the right is blocked with the synthesized peptide.

Contact information

Orders: order@immunoway.com
 Support: tech@immunoway.com
 Telephone: 877-594-3616 (Toll Free), 408-747-0185
 Website: <http://www.immunoway.com>
 Address: 2200 Ringwood Ave San Jose, CA 95131 USA



Please scan the QR code to access additional product information:
CHRAC15 Rabbit pAb