

CHP2 Rabbit pAb

CatalogNo: YT0915

Key Features

Host Species

- Rabbit

Reactivity

- Human, Mouse, Rat

Applications

- WB, ELISA

MW

- 22kD (Observed)

Isotype

- IgG

Recommended Dilution Ratios

WB 1:500-1:2000

ELISA 1:40000

Not yet tested in other applications.

Storage

Storage*

-15°C to -25°C/1 year (Do not lower than -25°C)

Formulation

Liquid in PBS containing 50% glycerol, 0.5% BSA and 0.02% sodium azide.

Basic Information

Clonality

Polyclonal

Immunogen Information

Immunogen

The antiserum was produced against synthesized peptide derived from human CHP2. AA range: 101-150

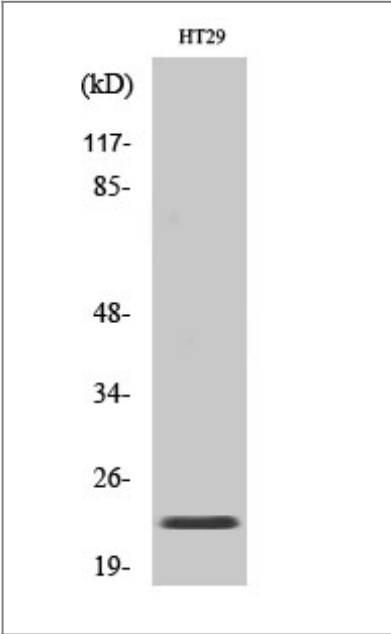
Specificity

CHP2 Polyclonal Antibody detects endogenous levels of CHP2 protein.

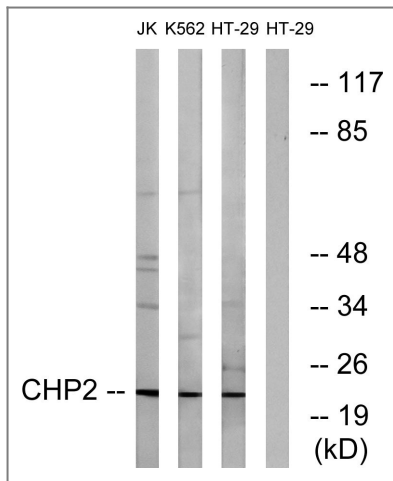
Target Information

Gene name	CHP2		
Protein Name	Calcineurin B homologous protein 2		
	Organism	Gene ID	UniProt ID
	Human	63928;	O43745;
	Mouse		Q9D869;
	Rat	308965;	Q810D1;
Cellular Localization	Nucleus . Cytoplasm . Cell membrane . Predominantly localized in a juxtanuclear region. Colocalizes with SLC9A3 in the juxtanuclear region and at the plasma membrane (By similarity). Exported from the nucleus to the cytoplasm through a nuclear export signal (NES) pathway. May shuttle between nucleus and cytoplasm. .		
Tissue specificity	Expressed in malignantly transformed cells but not detected in normal tissues.		
Function	Function:Binds to and activates SLC9A1/NHE1 in a serum-independent manner, thus increasing pH and protecting cells from serum deprivation-induced death.,similarity:Contains 4 EF-hand domains.,subunit:Binds to SLC9A1/NHE1.,tissue specificity:Expressed in malignantly transformed cells but not detected in normal tissues.,		

| Validation Data



Western Blot analysis of various cells using CHP2 Polyclonal Antibody



Western blot analysis of lysates from HT-29, K562, and Jurkat cells, using CHP2 Antibody. The lane on the right is blocked with the synthesized peptide.

Contact information

Orders: order@immunoway.com
 Support: tech@immunoway.com
 Telephone: 877-594-3616 (Toll Free), 408-747-0185
 Website: <http://www.immunoway.com>
 Address: 2200 Ringwood Ave San Jose, CA 95131 USA



Please scan the QR code to access additional product information:
CHP2 Rabbit pAb

For Research Use Only. Not for Use in Diagnostic Procedures.

[Antibody](#) | [ELISA Kits](#) | [Protein](#) | [Reagents](#)