

## cGKII Rabbit pAb

CatalogNo: YT0891 Orthogonal Validated 

### Key Features

#### Host Species

- Rabbit

#### Reactivity

- Human, Mouse, Rat

#### Applications

- WB, IHC, IF, ELISA

#### MW

- 87kD (Observed)

#### Isotype

- IgG

### Storage

**Storage\*** -15°C to -25°C/1 year (Do not lower than -25°C)

**Formulation** Liquid in PBS containing 50% glycerol, 0.5% BSA and 0.02% sodium azide.

### Recommended Dilution Ratios

**WB 1:500-1:2000**

**IHC 1:100-1:300**

**ELISA 1:40000**

**IF 1:50-200**

### Basic Information

**Clonality** Polyclonal

### Immunogen Information

**Immunogen** The antiserum was produced against synthesized peptide derived from human PKG2. AA range:92-141

**Specificity** cGKII Polyclonal Antibody detects endogenous levels of cGKII protein.

### Target Information

**Gene name** PRKG2

**Protein Name** cGMP-dependent protein kinase 2

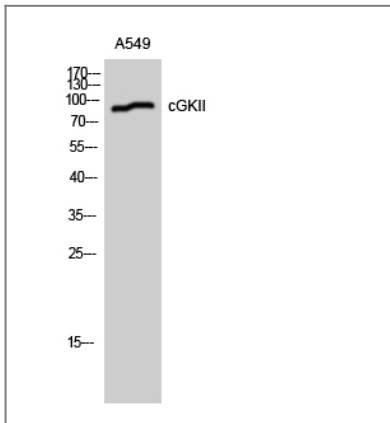
Organism	Gene ID	UniProt ID
Human	<a href="#">5593</a> ;	<a href="#">Q13237</a> ;
Mouse		<a href="#">Q61410</a> ;
Rat	<a href="#">25523</a> ;	<a href="#">Q64595</a> ;

**Cellular Localization** Apical cell membrane ; Lipid-anchor .

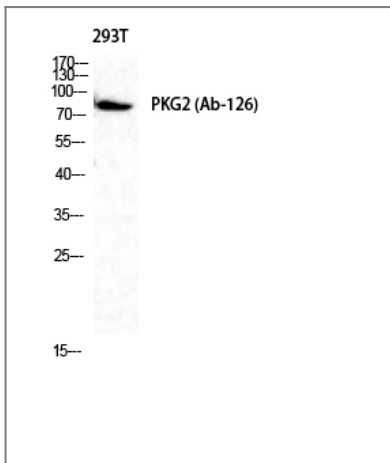
**Tissue specificity** Highly concentrated in brain, lung and intestinal mucosa.

**Function** Catalytic activity:ATP + a protein = ADP + a phosphoprotein.,enzyme regulation:Binding of cGMP results in enzyme activation.,similarity:Belongs to the protein kinase superfamily. AGC Ser/Thr protein kinase family. cGMP subfamily.,similarity:Contains 1 AGC-kinase C-terminal domain.,similarity:Contains 1 protein kinase domain.,similarity:Contains 2 cyclic nucleotide-binding domains.,tissue specificity:Highly concentrated in brain, lung and intestinal mucosa.,

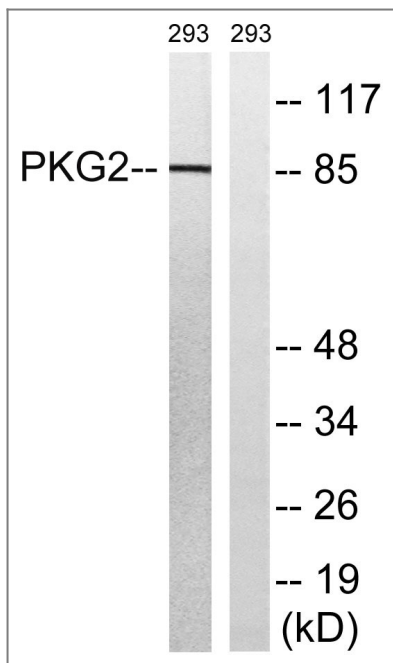
## Validation Data



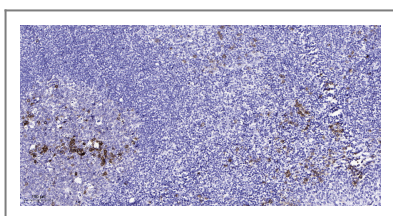
Western Blot analysis of A549 cells using cGKII Polyclonal Antibody diluted at 1:1000



Western Blot analysis of 293T cells using cGKII Polyclonal Antibody diluted at 1:1000



Western blot analysis of lysates from 293 cells, treated with anisomycin 25ug/ml 30', using PKG2 Antibody. The lane on the right is blocked with the synthesized peptide.



Immunohistochemical analysis of paraffin-embedded human tonsil. 1, Antibody was diluted at 1:200(4° overnight). 2, Tris-EDTA,pH9.0 was used for antigen retrieval. 3,Secondary antibody was diluted at 1:200(room temperature, 45min).

## Contact information

Orders: [order@immunoway.com](mailto:order@immunoway.com)  
 Support: [tech@immunoway.com](mailto:tech@immunoway.com)  
 Telephone: 877-594-3616 (Toll Free), 408-747-0185  
 Website: <http://www.immunoway.com>  
 Address: 2200 Ringwood Ave San Jose, CA 95131 USA



Please scan the QR code to access additional product information:  
**cGKII Rabbit pAb**

For Research Use Only. Not for Use in Diagnostic Procedures.

[Antibody](#) | [ELISA Kits](#) | [Protein](#) | [Reagents](#)