

CGI-43 Rabbit pAb

CatalogNo: YT0890

| Key Features

Host Species

- Rabbit

Reactivity

- Human, Mouse, Monkey

Applications

- WB, ELISA

MW

- 56kD (Observed)

Isotype

- IgG

| Recommended Dilution Ratios

WB 1:500-1:2000

ELISA 1:10000

Not yet tested in other applications.

| Storage

Storage*

-15°C to -25°C/1 year (Do not lower than -25°C)

Formulation

Liquid in PBS containing 50% glycerol, 0.5% BSA and 0.02% sodium azide.

| Basic Information

Clonality

Polyclonal

| Immunogen Information

Immunogen

The antiserum was produced against synthesized peptide derived from human CG028. AA range: 411-460

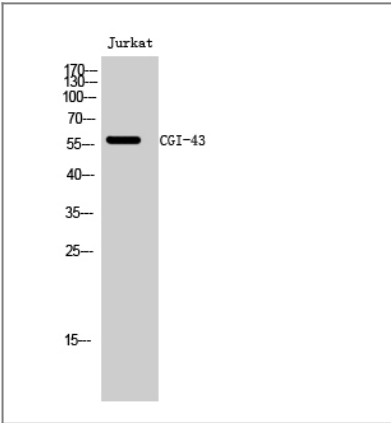
Specificity

CGI-43 Polyclonal Antibody detects endogenous levels of CGI-43 protein.

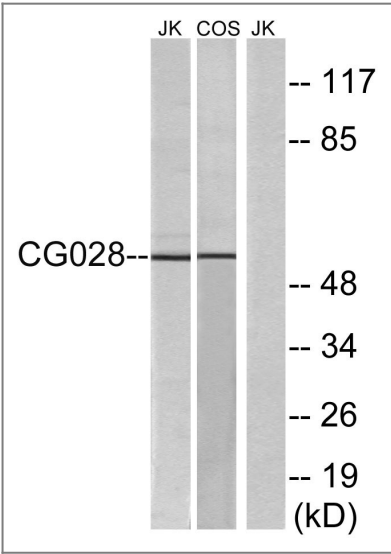
| Target Information

Gene name	CCZ1/C7orf28B		
Protein Name	Vacuolar fusion protein CCZ1 homolog/Vacuolar fusion protein CCZ1 homolog-like		
	Organism	Gene ID	UniProt ID
	Human	221960 ;	P86791 ; P86790 ;
	Mouse	231874 ;	
Cellular Localization	Lysosome membrane .		
Tissue specificity	Brain,Skin,Testis,Uterus,		
Function	similarity:Belongs to the UPF0550 family.,		

Validation Data



Western Blot analysis of Jurkat cells using CGI-43 Polyclonal Antibody diluted at 1:500



Western blot analysis of lysates from Jurkat and COS cells, using CG028 Antibody. The lane on the right is blocked with the synthesized peptide.

Contact information

Orders: order@immunoway.com
Support: tech@immunoway.com
Telephone: 877-594-3616 (Toll Free), 408-747-0185
Website: http://www.immunoway.com
Address: 2200 Ringwood Ave San Jose, CA 95131 USA



Please scan the QR code
to access additional
product information:
CGI-43 Rabbit pAb

For Research Use Only. Not for Use in Diagnostic Procedures.

[Antibody](#) | [ELISA Kits](#) | [Protein](#) | [Reagents](#)