

CES2 Rabbit pAb

CatalogNo: YT0874

| Key Features

Host Species

- Rabbit

Reactivity

- Human

Applications

- WB,IHC,IF,ELISA

MW

- 61kD (Observed)

Isotype

- IgG

| Recommended Dilution Ratios

WB 1:500-1:2000

IHC 1:100-1:300

ELISA 1:40000

IF 1:50-200

| Storage

Storage* -15°C to -25°C/1 year(Do not lower than -25°C)

Formulation Liquid in PBS containing 50% glycerol, 0.5% BSA and 0.02% sodium azide.

| Basic Information

Clonality Polyclonal

| Immunogen Information

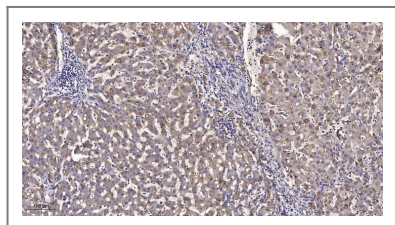
Immunogen Synthesized peptide derived from the Internal region of human CES2.

Specificity CES2 Polyclonal Antibody detects endogenous levels of CES2 protein.

| Target Information

Gene name	CES2		
Protein Name	Cocaine esterase		
	Organism	Gene ID	UniProt ID
	Human	8824;	O00748;
Cellular Localization	Endoplasmic reticulum lumen .		
Tissue specificity	Preferentially expressed in intestine with moderate expression in liver. Within the intestine, highest expression is found in small intestine with lower expression in colon and rectum.		
Function	Catalytic activity:A carboxylic ester + H(2)O = an alcohol + a carboxylate.,Function:Involved in the detoxification of xenobiotics and in the activation of ester and amide prodrugs. Shows high catalytic efficiency for hydrolysis of 4-methumbelliferyl acetate, heroin and 6-monoacetylmorphine.,PTM:Glycosylated.,similarity:Belongs to the type-B carboxylesterase/lipase family.,subunit:Monomer.,tissue specificity:Preferentially expressed in intestine with moderate expression in liver. Within the intestine, highest expression is found in small intestine with lower expression in colon and rectum.,		

Validation Data



Immunohistochemical analysis of paraffin-embedded human liver cancer. 1, Antibody was diluted at 1:200(4° overnight). 2, Tris-EDTA,pH9.0 was used for antigen retrieval. 3,Secondary antibody was diluted at 1:200(room temperature, 45min).

Contact information

Orders: order@immunoway.com
 Support: tech@immunoway.com
 Telephone: 877-594-3616 (Toll Free), 408-747-0185
 Website: <http://www.immunoway.com>
 Address: 2200 Ringwood Ave San Jose, CA 95131 USA



Please scan the QR code to access additional product information:
CES2 Rabbit pAb