

CERKL Rabbit pAb

CatalogNo: YT0873

Key Features

Host Species

- Rabbit

Reactivity

- Human

Applications

- WB,IHC,IF,ELISA

MW

- 63kD (Observed)

Isotype

- IgG

Recommended Dilution Ratios

WB 1:500-1:2000

IHC 1:100-1:300

ELISA 1:20000

IF 1:50-200

Storage

Storage* -15°C to -25°C/1 year(Do not lower than -25°C)

Formulation Liquid in PBS containing 50% glycerol, 0.5% BSA and 0.02% sodium azide.

Basic Information

Clonality Polyclonal

Immunogen Information

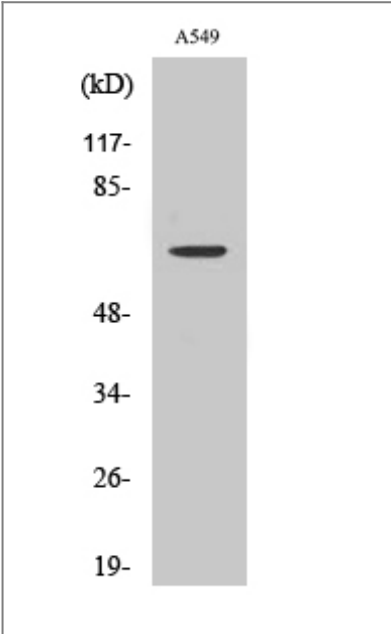
Immunogen The antiserum was produced against synthesized peptide derived from human CERKL. AA range:341-390

Specificity CERKL Polyclonal Antibody detects endogenous levels of CERKL protein.

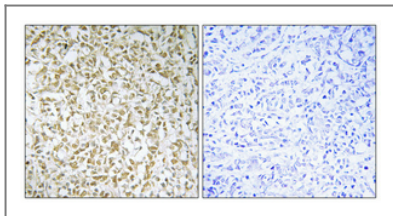
Target Information

Gene name	CERKL		
Protein Name	Ceramide kinase-like protein		
	Organism	Gene ID	UniProt ID
	Human	375298 ;	Q49MI3 ;
Cellular Localization	Cytoplasm. Nucleus, nucleolus. Enriched in nucleoli. May shuttle between nucleus and cytoplasm. Isoform 5 is not enriched in the nucleoli.; [Isoform 2]: Cytoplasm. Nucleus, nucleolus. Golgi apparatus, trans-Golgi network. Endoplasmic reticulum.		
Tissue specificity	Isoform 1 and isoform 2 are expressed in adult retina, liver and pancreas as well as in fetal brain, lung and kidney. Isoform 3 is expressed in adult retina as well as in fetal lung and liver. Isoform 4 is expressed in adult retina, lung and kidney as well as in fetal lung and liver. Moderately expressed in retina, kidney, lung, testis, trachea, and pancreas. Weakly expressed in brain, placenta and liver.		
Function	developmental stage:Expressed in fetal lung, kidney and brain.,Disease:Defects in CERKL are the cause of retinitis pigmentosa type 26 (RP26) [MIM:608380]. RP leads to degeneration of retinal photoreceptor cells. Patients typically have night vision blindness and loss of midperipheral visual field. As their condition progresses, they lose their far peripheral visual field and eventually central vision as well. RP26 inheritance is autosomal recessive.,Function:Has no detectable ceramide-kinase activity.,PTM:Phosphorylated on serine residues.,sequence Caution:Wrong choice of CDS.,similarity:Contains 1 DAGKc domain.,subcellular location:Enriched in nucleoli. May shuttle between nucleus and cytoplasm. Isoform 5 is not enriched in the nucleoli.,tissue specificity:Moderately expressed in retina, kidney, lung, testis, trachea, and pancreas. Weakly expressed in brain, placenta and liver.,		

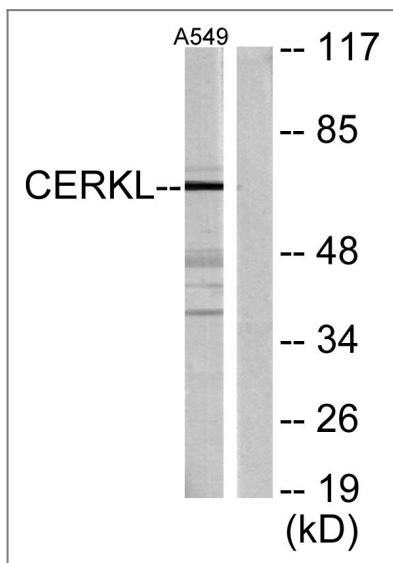
| Validation Data



Western Blot analysis of various cells using CERKL Polyclonal Antibody



Immunohistochemical analysis of paraffin-embedded Human breast cancer. Antibody was diluted at 1:100(4° overnight). High-pressure and temperature Tris-EDTA,pH8.0 was used for antigen retrieval. Negative contrl (right) obtained from antibody was pre-absorbed by immunogen peptide.



Western blot analysis of lysates from A549 cells, using CERKL Antibody. The lane on the right is blocked with the synthesized peptide.

Contact information

Orders: order@immunoway.com
 Support: tech@immunoway.com
 Telephone: 877-594-3616 (Toll Free), 408-747-0185
 Website: <http://www.immunoway.com>
 Address: 2200 Ringwood Ave San Jose, CA 95131 USA



Please scan the QR code to access additional product information:
CERKL Rabbit pAb

For Research Use Only. Not for Use in Diagnostic Procedures.

[Antibody](#) | [ELISA Kits](#) | [Protein](#) | [Reagents](#)