

Cep97 Rabbit pAb

CatalogNo: YT0867

Key Features

Host Species

- Rabbit

Reactivity

- Human, Mouse

Applications

- WB, IHC, IF, ELISA

MW

- 97kD (Observed)

Isotype

- IgG

Recommended Dilution Ratios

WB 1:500-1:2000**IHC 1:100-1:300****ELISA 1:20000****IF 1:50-200**

Storage

Storage*

-15°C to -25°C/1 year (Do not lower than -25°C)

Formulation

Liquid in PBS containing 50% glycerol, 0.5% BSA and 0.02% sodium azide.

Basic Information

Clonality

Polyclonal

Immunogen Information

Immunogen

The antiserum was produced against synthesized peptide derived from human CEP97. AA range: 581-630

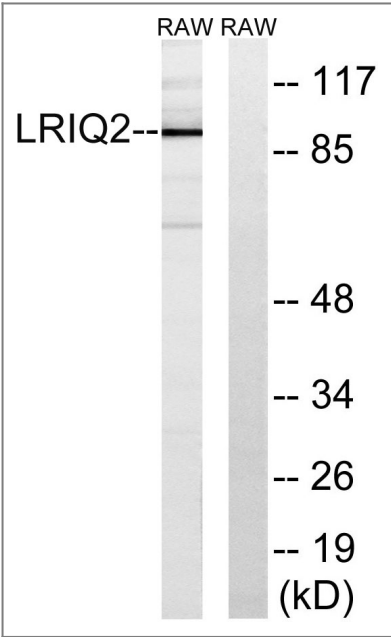
Specificity

Cep97 Polyclonal Antibody detects endogenous levels of Cep97 protein.

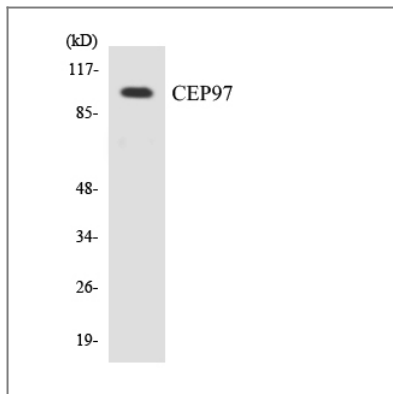
Target Information

Gene name	CEP97		
Protein Name	Centrosomal protein of 97 kDa		
	Organism	Gene ID	UniProt ID
	Human	79598;	Q8IW35;
	Mouse	74201;	Q9CZ62;
Cellular Localization	Cytoplasm, cytoskeleton, microtubule organizing center, centrosome . Cytoplasm, cytoskeleton, microtubule organizing center, centrosome, centriole . Recruited at the distal end of the mother centriole by MPHOSPH9. .		
Tissue specificity	Lung,Skin,Testis,		
Function	Function:Collaborates with cep110, being involved in the suppression of a cilia assembly program. Required for correct spindle formation and has a role in cytokinesis. Required for recruitment of cep110 to the centrosome.,PTM:Phosphorylated upon DNA damage, probably by ATM or ATR.,similarity:Contains 1 IQ domain.,similarity:Contains 6 LRR (leucine-rich) repeats.,subunit:Interacts with CALM1 and CEP110.,		

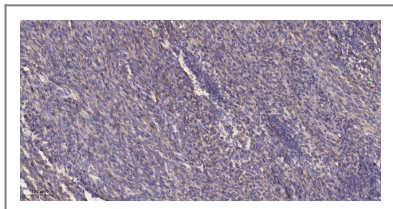
| Validation Data



Western blot analysis of lysates from RAW264.7 cells, using CEP97 Antibody. The lane on the right is blocked with the synthesized peptide.



Western blot analysis of the lysates from COLO205 cells using CEP97 antibody.



Immunohistochemical analysis of paraffin-embedded human Colon cancer. 1, Antibody was diluted at 1:200(4° overnight). 2, Tris-EDTA,pH9.0 was used for antigen retrieval. 3,Secondary antibody was diluted at 1:200(room temperature, 45min).

Contact information

Orders: order@immunoway.com
 Support: tech@immunoway.com
 Telephone: 877-594-3616 (Toll Free), 408-747-0185
 Website: <http://www.immunoway.com>
 Address: 2200 Ringwood Ave San Jose, CA 95131 USA



Please scan the QR code to access additional product information:
Cep97 Rabbit pAb

For Research Use Only. Not for Use in Diagnostic Procedures.

[Antibody](#) | [ELISA Kits](#) | [Protein](#) | [Reagents](#)