

CDYL2 Rabbit pAb

CatalogNo: YT0848

Key Features

Host Species

- Rabbit

Reactivity

- Human, Mouse

Applications

- WB, IHC, IF, ICC, ELISA

MW

- 56kD (Observed)

Isotype

- IgG

Recommended Dilution Ratios

WB 1:500-1:2000

IHC 1:100-1:300

ICC 1:200-1:1000

ELISA 1:20000

IF 1:50-200

Storage

Storage*

-15°C to -25°C/1 year (Do not lower than -25°C)

Formulation

Liquid in PBS containing 50% glycerol, 0.5% BSA and 0.02% sodium azide.

Basic Information

Clonality

Polyclonal

Immunogen Information

Immunogen

The antiserum was produced against synthesized peptide derived from human CDYL2. AA range: 31-80

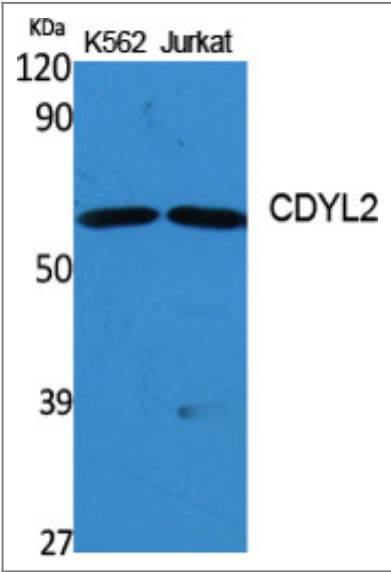
Specificity

CDYL2 Polyclonal Antibody detects endogenous levels of CDYL2 protein.

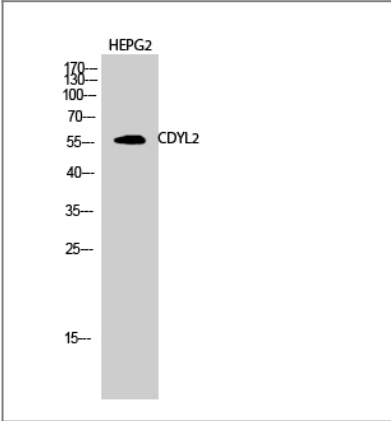
Target Information

Gene name	CDYL2		
Protein Name	Chromodomain Y-like protein 2		
	Organism	Gene ID	UniProt ID
	Human	124359 ;	Q8N8U2 ;
Cellular Localization	Nucleus .		
Tissue specificity	Ubiquitously expressed.		
Function	similarity:Contains 1 chromo domain.,tissue specificity:Ubiquitously expressed.,		

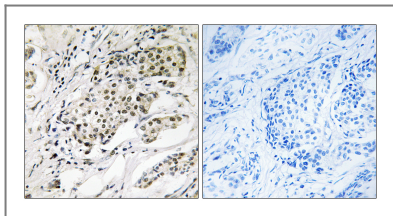
Validation Data



Western Blot analysis of various cells using CDYL2 Polyclonal Antibody diluted at 1:1000 cells nucleus extracted by Minute TM Cytoplasmic and Nuclear Fractionation kit (SC-003,Inventbiotech,MN,USA).



Western Blot analysis of HEPG2 cells using CDYL2 Polyclonal Antibody diluted at 1:1000 cells nucleus extracted by Minute TM Cytoplasmic and Nuclear Fractionation kit (SC-003,Inventbiotech,MN,USA).



Immunohistochemistry analysis of paraffin-embedded human breast carcinoma, using CDYL2 Antibody. The picture on the right is blocked with the synthesized peptide.

| Contact information

Orders: order@immunoway.com
Support: tech@immunoway.com
Telephone: 877-594-3616 (Toll Free), 408-747-0185
Website: <http://www.immunoway.com>
Address: 2200 Ringwood Ave San Jose, CA 95131 USA



Please scan the QR code to access additional product information:

CDYL2 Rabbit pAb

For Research Use Only. Not for Use in Diagnostic Procedures.

[Antibody](#) | [ELISA Kits](#) | [Protein](#) | [Reagents](#)