

CDO Rabbit pAb

CatalogNo: YT0844

Key Features

Host Species

- Rabbit

Reactivity

- Human, Mouse, Rat

Applications

- IF, ELISA

MW

- 139kD (Calculated)

Isotype

- IgG

Storage

Storage* -15°C to -25°C/1 year (Do not lower than -25°C)

Formulation Liquid in PBS containing 50% glycerol, 0.5% BSA and 0.02% sodium azide.

Recommended Dilution Ratios

IF 1:200-1:1000

ELISA 1:10000

Not yet tested in other applications

Basic Information

Clonality Polyclonal

Immunogen Information

Immunogen The antiserum was produced against synthesized peptide derived from human CDON. AA range: 511-560

Specificity CDO Polyclonal Antibody detects endogenous levels of CDO protein.

Target Information

Gene name CDON

Protein Name Cell adhesion molecule-related/down-regulated by oncogenes

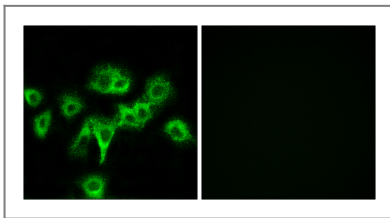
Organism	Gene ID	UniProt ID
Human	50937 ;	Q4KMG0 ;
Mouse		Q32MD9 ;

Cellular Localization Cell membrane ; Single-pass membrane protein .

Tissue specificity Fetal brain,Fetal lung,Placenta,

Function Function:Component of a cell-surface receptor complex that mediates cell-cell interactions between muscle precursor cells. Promotes differentiation of myogenic cells.,PTM:N-glycosylated.,similarity:Contains 3 fibronectin type-III domains.,similarity:Contains 5 Ig-like C2-type (immunoglobulin-like) domains.,subunit:Part of a complex that contains BOC, CDON, NEO1, cadherins and CTNNB1. Interacts with NTN3.,

Validation Data



Immunofluorescence analysis of HeLa cells, using CDON Antibody. The picture on the right is blocked with the synthesized peptide.

Contact information

Orders: order@immunoway.com
Support: tech@immunoway.com
Telephone: 877-594-3616 (Toll Free), 408-747-0185
Website: <http://www.immunoway.com>
Address: 2200 Ringwood Ave San Jose, CA 95131 USA



Please scan the QR code to access additional product information:
CDO Rabbit pAb

For Research Use Only. Not for Use in Diagnostic Procedures.

[Antibody](#) | [ELISA Kits](#) | [Protein](#) | [Reagents](#)