

CDHF10 Rabbit pAb

CatalogNo: YT0825

| Key Features

Host Species

- Rabbit

Reactivity

- Human, Mouse, Rat

Applications

- IHC, IF, ELISA

MW

- 317kD (Calculated)

Isotype

- IgG

| Recommended Dilution Ratios

IHC 1:100-1:300

IF 1:200-1:1000

ELISA 1:5000

Not yet tested in other applications.

| Storage

Storage*

-15°C to -25°C/1 year (Do not lower than -25°C)

Formulation

Liquid in PBS containing 50% glycerol, 0.5% BSA and 0.02% sodium azide.

| Basic Information

Clonality

Polyclonal

| Immunogen Information

Immunogen

The antiserum was produced against synthesized peptide derived from human CELSR2. AA range: 2781-2830

Specificity

CDHF10 Polyclonal Antibody detects endogenous levels of CDHF10 protein.

| Target Information

Gene name CELSR2

Protein Name Cadherin EGF LAG seven-pass G-type receptor 2

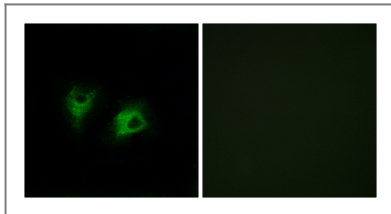
Organism	Gene ID	UniProt ID
Human	1952;	Q9HCU4;
Mouse		Q9R0M0;
Rat		Q9QYP2;

Cellular Localization Cell membrane; Multi-pass membrane protein.

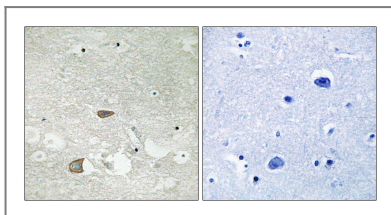
Tissue specificity Highest expression in brain and testis.

Function Function:Receptor that may have an important role in cell/cell signaling during nervous system formation.,PTM:The iron and 2-oxoglutarate dependent 3-hydroxylation of aspartate and asparagine is (R) stereospecific within EGF domains.,similarity:Belongs to the G-protein coupled receptor 2 family. LN-TM7 subfamily.,similarity:Contains 1 GPS domain.,similarity:Contains 1 laminin EGF-like domain.,similarity:Contains 2 laminin G-like domains.,similarity:Contains 7 EGF-like domains.,similarity:Contains 9 cadherin domains.,tissue specificity:Highest expression in brain and testis.,

Validation Data



Immunofluorescence analysis of COS7 cells, using CELSR2 Antibody. The picture on the right is blocked with the synthesized peptide.



Immunohistochemistry analysis of paraffin-embedded human brain tissue, using CELSR2 Antibody. The picture on the right is blocked with the synthesized peptide.

Contact information

Orders: order@immunoway.com
Support: tech@immunoway.com
Telephone: 877-594-3616 (Toll Free), 408-747-0185
Website: <http://www.immunoway.com>
Address: 2200 Ringwood Ave San Jose, CA 95131 USA



Please scan the QR code to access additional product information:
CDHF10 Rabbit pAb

