

## CdcA4 Rabbit pAb

CatalogNo: YT0820

Orthogonal Validated 

### Key Features

**Host Species**

- Rabbit

**Reactivity**

- Human, Mouse

**Applications**

- IHC, IF, WB, ELISA

**MW**

- 26kD (Observed)

**Isotype**

- IgG

### Recommended Dilution Ratios

**WB 1:500-2000****IHC 1:100-1:300****IF 1:200-1:1000****ELISA 1:5000****Not yet tested in other applications.**

### Storage

**Storage\***

-15°C to -25°C/1 year (Do not lower than -25°C)

**Formulation**

Liquid in PBS containing 50% glycerol, 0.5% BSA and 0.02% sodium azide.

### Basic Information

**Clonality**

Polyclonal

### Immunogen Information

**Immunogen**

The antiserum was produced against synthesized peptide derived from human CDCA4. AA range: 121-170

**Specificity**

CdcA4 Polyclonal Antibody detects endogenous levels of CdcA4 protein.

## | Target Information

**Gene name** CDCA4

**Protein Name** Cell division cycle-associated protein 4

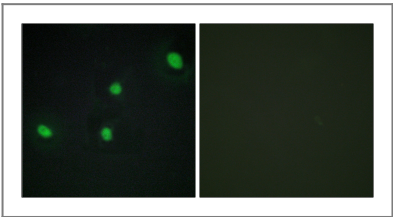
Organism	Gene ID	UniProt ID
Human	<a href="#">55038</a> ;	<a href="#">Q9BXL8</a> ;
Mouse	<a href="#">71963</a> ;	<a href="#">Q9CWM2</a> ;

**Cellular Localization** Nucleus .

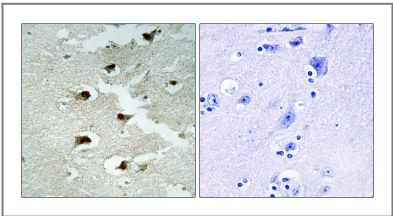
**Tissue specificity** Highest levels of expression in the pancreas, thymus, testis, spleen, liver, placenta and leukocytes. Relatively low levels in the lung, kidney, prostate, ovary, small intestine and colon. Hardly detectable, if at all, in the brain, skeletal muscle and heart.

**Function** Function:May participate in the regulation of cell proliferation through the E2F/RB pathway. May be involved in molecular regulation of hematopoietic stem cells and progenitor cell lineage commitment and differentiation.,induction:By E2F1.,similarity:Contains 1 SERTA domain.,tissue specificity:Highest levels of expression in the pancreas, thymus, testis, spleen, liver, placenta and leukocytes. Relatively low levels in the lung, kidney, prostate, ovary, small intestine and colon. Hardly detectable, if at all, in the brain, skeletal muscle and heart.,

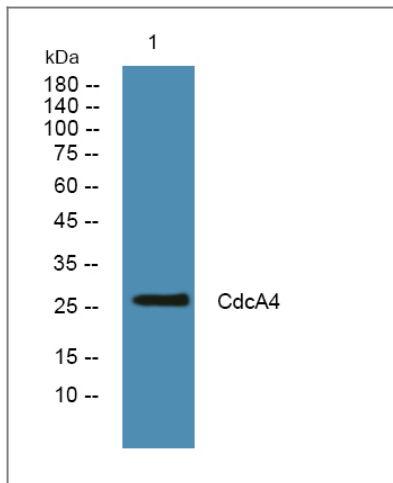
## | Validation Data



Immunofluorescence analysis of HepG2 cells, using CDCA4 Antibody. The picture on the right is blocked with the synthesized peptide.



Immunohistochemistry analysis of paraffin-embedded human brain tissue, using CDCA4 Antibody. The picture on the right is blocked with the synthesized peptide.



Western blot analysis of lysates from A431 cells, primary antibody was diluted at 1:1000, 4° over night

## Contact information

Orders: [order@immunoway.com](mailto:order@immunoway.com)  
Support: [tech@immunoway.com](mailto:tech@immunoway.com)  
Telephone: 877-594-3616 (Toll Free), 408-747-0185  
Website: <http://www.immunoway.com>  
Address: 2200 Ringwood Ave San Jose, CA 95131 USA



Please scan the QR code to access additional product information:  
**CdcA4 Rabbit pAb**

For Research Use Only. Not for Use in Diagnostic Procedures.

[Antibody](#) | [ELISA Kits](#) | [Protein](#) | [Reagents](#)