

## Cdc50C Rabbit pAb

CatalogNo: YT0814

### Key Features

#### Host Species

- Rabbit

#### Reactivity

- Human

#### Applications

- IF,ELISA

#### MW

- 13kD (Calculated)

#### Isotype

- IgG

### Recommended Dilution Ratios

**IF 1:200-1:1000**

**ELISA 1:20000**

**Not yet tested in other applications**

### Storage

**Storage\*** -15°C to -25°C/1 year(Do not lower than -25°C)

**Formulation** Liquid in PBS containing 50% glycerol, 0.5% BSA and 0.02% sodium azide.

### Basic Information

**Clonality** Polyclonal

### Immunogen Information

**Immunogen** The antiserum was produced against synthesized peptide derived from human TMEM30C. AA range:51-100

**Specificity** Cdc50C Polyclonal Antibody detects endogenous levels of Cdc50C protein.

### Target Information

**Gene name** TMEM30C

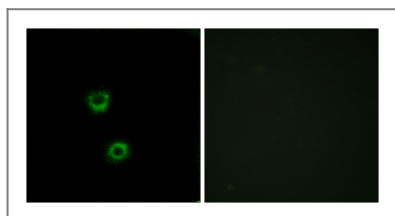
**Protein Name** Cell cycle control protein 50C

Organism	Gene ID	UniProt ID
Human	<a href="#">288175</a> ;	<a href="#">A0ZSE6</a> ;
Mouse		<a href="#">Q9D4D7</a> ;

**Cellular Localization** Membrane ; Single-pass membrane protein .

**Tissue specificity** Specifically expressed in testis.

## | Validation Data



Immunofluorescence analysis of MCF7 cells, using TMEM30C Antibody. The picture on the right is blocked with the synthesized peptide.

## | Contact information

Orders: [order@immunoway.com](mailto:order@immunoway.com)  
Support: [tech@immunoway.com](mailto:tech@immunoway.com)  
Telephone: 877-594-3616 (Toll Free), 408-747-0185  
Website: <http://www.immunoway.com>  
Address: 2200 Ringwood Ave San Jose, CA 95131 USA



Please scan the QR code to access additional product information:  
**Cdc50C Rabbit pAb**

For Research Use Only. Not for Use in Diagnostic Procedures.

[Antibody](#) | [ELISA Kits](#) | [Protein](#) | [Reagents](#)