

## Cdc50B Rabbit pAb

CatalogNo: YT0813

### Key Features

#### Host Species

- Rabbit

#### Reactivity

- Human, Mouse

#### Applications

- WB, ELISA

#### MW

- 38kD (Observed)

#### Isotype

- IgG

### Recommended Dilution Ratios

**WB 1:500-1:2000**

**ELISA 1:40000**

**Not yet tested in other applications.**

### Storage

**Storage\*** -15°C to -25°C/1 year (Do not lower than -25°C)

**Formulation** Liquid in PBS containing 50% glycerol, 0.5% BSA and 0.02% sodium azide.

### Basic Information

**Clonality** Polyclonal

### Immunogen Information

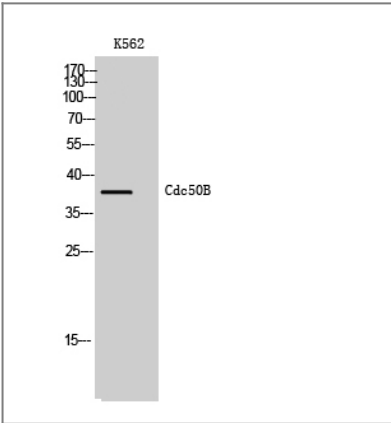
**Immunogen** The antiserum was produced against synthesized peptide derived from human TMEM30B. AA range: 91-140

**Specificity** Cdc50B Polyclonal Antibody detects endogenous levels of Cdc50B protein.

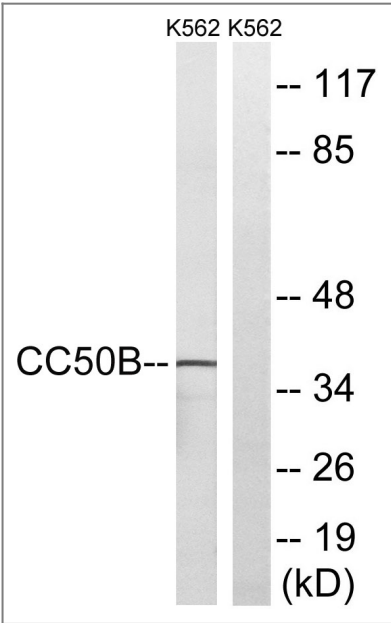
### Target Information

Gene name	TMEM30B		
Protein Name	Cell cycle control protein 50B		
	Organism	Gene ID	UniProt ID
	Human	<a href="#">161291</a> ;	<a href="#">Q3MIR4</a> ;
	Mouse	<a href="#">238257</a> ;	<a href="#">Q8BHG3</a> ;
Cellular Localization	Cell membrane ; Multi-pass membrane protein .		
Tissue specificity	Heart,Lung,		
Function	similarity:Belongs to the CDC50/LEM3 family.,		

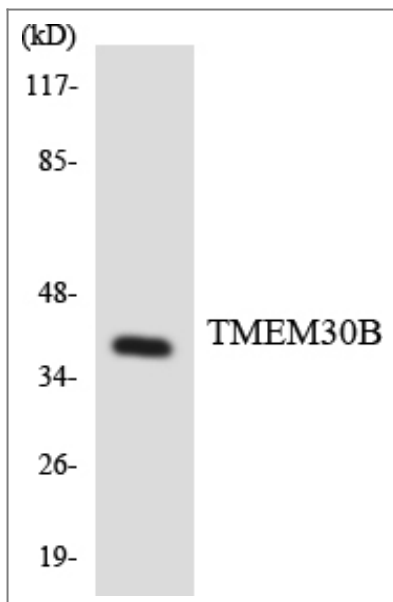
Validation Data



Western Blot analysis of K562 cells using Cdc50B Polyclonal Antibody



Western blot analysis of lysates from K562 cells, using TMEM30B Antibody. The lane on the right is blocked with the synthesized peptide.



Western blot analysis of the lysates from HeLa cells using TMEM30B antibody.

## Contact information

Orders: [order@immunoway.com](mailto:order@immunoway.com)  
Support: [tech@immunoway.com](mailto:tech@immunoway.com)  
Telephone: 877-594-3616 (Toll Free), 408-747-0185  
Website: <http://www.immunoway.com>  
Address: 2200 Ringwood Ave San Jose, CA 95131 USA



Please scan the QR code to access additional product information:  
**Cdc50B Rabbit pAb**

For Research Use Only. Not for Use in Diagnostic Procedures.

[Antibody](#) | [ELISA Kits](#) | [Protein](#) | [Reagents](#)