

## Cdc20 Rabbit pAb

CatalogNo: YT0791

### Key Features

#### Host Species

- Rabbit

#### Reactivity

- Human, Mouse, Rat

#### Applications

- WB, IHC, IF, ELISA

#### MW

- 50kD (Observed)

#### Isotype

- IgG

### Recommended Dilution Ratios

**WB 1:500-1:2000**

**IHC 1:100-1:300**

**ELISA 1:20000**

**IF 1:50-200**

### Storage

#### Storage\*

-15°C to -25°C/1 year (Do not lower than -25°C)

#### Formulation

Liquid in PBS containing 50% glycerol, 0.5% BSA and 0.02% sodium azide.

### Basic Information

#### Clonality

Polyclonal

### Immunogen Information

#### Immunogen

The antiserum was produced against synthesized peptide derived from human p55CDC. AA range: 81-130

#### Specificity

Cdc20 Polyclonal Antibody detects endogenous levels of Cdc20 protein.

### Target Information

**Gene name** CDC20

**Protein Name** Cell division cycle protein 20 homolog

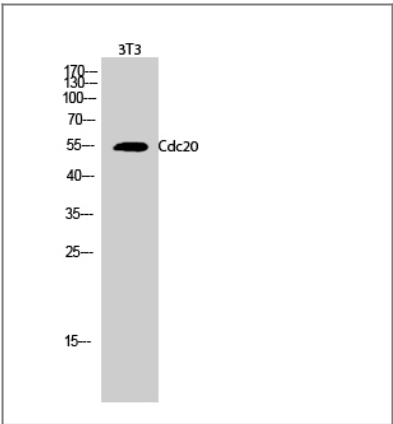
Organism	Gene ID	UniProt ID
Human	<a href="#">991</a> ;	<a href="#">Q12834</a> ;
Mouse	<a href="#">107995</a> ;	<a href="#">Q9JJ66</a> ;
Rat	<a href="#">64515</a> ;	<a href="#">Q62623</a> ;

**Cellular Localization** Cytoplasm, cytoskeleton, microtubule organizing center, centrosome . Cytoplasm, cytoskeleton, spindle pole .

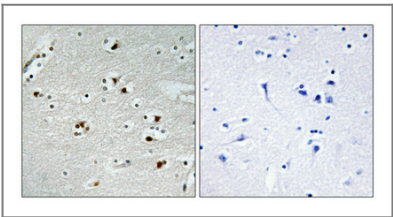
**Tissue specificity** Colon,Colon adenocarcinoma,Liver,Lymph,Muscle,Ovary,Skin,Spleen,Testis,

**Function** developmental stage:Synthesis is initiated at G1/S, protein level peaks in M phase and protein is abruptly degraded at M/G1 transition.,Function:Required for full ubiquitin ligase activity of the anaphase promoting complex/cyclosome (APC/C) and may confer substrate specificity upon the complex. Is regulated by MAD2L1. In metaphase the MAD2L1-CDC20-APC/C ternary complex is inactive and in anaphase the CDC20-APC/C binary complex is active in degrading substrates.,pathway:Protein modification; protein ubiquitination.,PTM:Phosphorylated during mitosis, probably by maturation promoting factor (MPF).,PTM:Ubiquitinated and degraded by the proteasome during spindle assembly checkpoint.,similarity:Belongs to the WD repeat CDC20/Fizzy family.,similarity:Contains 7 WD repeats.,subunit:Found in a complex with CDC20, CDC27, SPATC1 and TUBG1. Interacts with SPATC1 (By similarity). Interacts with MAD2L1 and BUB1B. The phosphorylated form interacts with APC/C.,

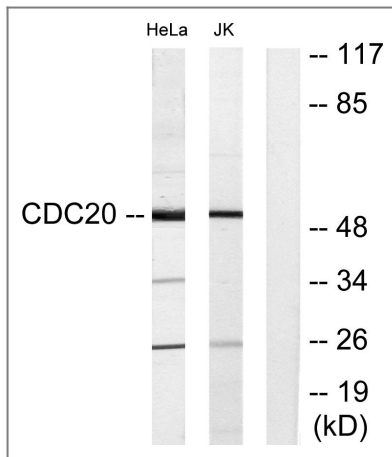
## Validation Data



Western Blot analysis of 3T3 cells using Cdc20 Polyclonal Antibody diluted at 1:2000



Immunohistochemical analysis of paraffin-embedded Human brain. Antibody was diluted at 1:100(4° overnight). High-pressure and temperature Tris-EDTA,pH8.0 was used for antigen retrieval. Negative contrl (right) obtained from antibody was pre-absorbed by immunogen peptide.



Western blot analysis of lysates from Jurkat and HeLa cells, using p55CDC Antibody. The lane on the right is blocked with the synthesized peptide.

## Contact information

Orders: [order@immunoway.com](mailto:order@immunoway.com)  
 Support: [tech@immunoway.com](mailto:tech@immunoway.com)  
 Telephone: 877-594-3616 (Toll Free), 408-747-0185  
 Website: <http://www.immunoway.com>  
 Address: 2200 Ringwood Ave San Jose, CA 95131 USA



Please scan the QR code to access additional product information:  
**Cdc20 Rabbit pAb**

For Research Use Only. Not for Use in Diagnostic Procedures.

[Antibody](#) | [ELISA Kits](#) | [Protein](#) | [Reagents](#)