

CDC16/APC6 Rabbit pAb

CatalogNo: YT0787

Key Features

Host Species

- Rabbit

Reactivity

- Human, Mouse, Rat

Applications

- WB, IHC, IF, ELISA

MW

- 72kD (Observed)

Isotype

- IgG

Recommended Dilution Ratios

WB 1:500-1:2000

IHC 1:100-1:300

ELISA 1:20000

IF 1:50-200

Storage

Storage* -15°C to -25°C/1 year (Do not lower than -25°C)

Formulation Liquid in PBS containing 50% glycerol, 0.5% BSA and 0.02% sodium azide.

Basic Information

Clonality Polyclonal

Immunogen Information

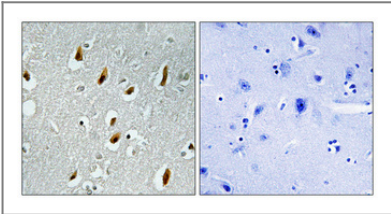
Immunogen The antiserum was produced against synthesized peptide derived from human APC6. AA range: 181-230

Specificity Cdc16 Polyclonal Antibody detects endogenous levels of Cdc16 protein.

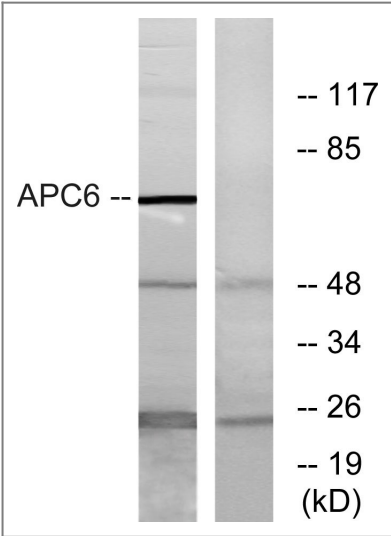
Target Information

Gene name	CDC16		
Protein Name	Cell division cycle protein 16 homolog		
	Organism	Gene ID	UniProt ID
	Human	8881 ;	Q13042 ;
	Mouse	69957 ;	Q8R349 ;
Cellular Localization	Cytoplasm, cytoskeleton, microtubule organizing center, centrosome . Cytoplasm, cytoskeleton, spindle . Colocalizes with CDC27 to the centrosome at all stages of the cell cycle and to the mitotic spindle.		
Tissue specificity	Aorta endothelial cell,Brain,Epithelium,Lung,Skin,		
Function	Function:Component of the anaphase promoting complex/cyclosome (APC/C), a cell cycle-regulated ubiquitin ligase that controls progression through mitosis and the G1 phase of the cell cycle.,pathway:Protein modification; protein ubiquitination.,PTM:Phosphorylated. Phosphorylation on Ser-560 occurs specifically during mitosis.,similarity:Belongs to the APC6/CDC16 family.,similarity:Contains 7 TPR repeats.,subcellular location:Colocalizes with CDC27 to the centrosome at all stages of the cell cycle and to the mitotic spindle.,subunit:The APC/C is composed of at least 11 subunits. Interacts with PPP5C and CDC20.,		

Validation Data



Immunohistochemical analysis of paraffin-embedded Human brain. Antibody was diluted at 1:100(4° overnight). High-pressure and temperature Tris-EDTA,pH8.0 was used for antigen retrieval. Negative contrl (right) obtaned from antibody was pre-absorbed by immunogen peptide.



Western blot analysis of lysates from NIH/3T3 cells, using APC6 Antibody. The lane on the right is blocked with the synthesized peptide.

| Contact information

Orders: order@immunoway.com
Support: tech@immunoway.com
Telephone: 877-594-3616 (Toll Free), 408-747-0185
Website: <http://www.immunoway.com>
Address: 2200 Ringwood Ave San Jose, CA 95131 USA



Please scan the QR code
to access additional
product information:
**CDC16/APC6 Rabbit
pAb**

For Research Use Only. Not for Use in Diagnostic Procedures.

[Antibody](#) | [ELISA Kits](#) | [Protein](#) | [Reagents](#)