

CD83 Rabbit pAb

CatalogNo: YT0779

Key Features

Host Species

- Rabbit

Reactivity

- Human, Mouse

Applications

- WB, IHC, IF, ELISA

MW

- 23kD (Observed)

Isotype

- IgG

Recommended Dilution Ratios

WB 1:500-1:2000

IHC 1:100-1:300

ELISA 1:10000

IF 1:50-200

Storage

Storage*

-15°C to -25°C/1 year (Do not lower than -25°C)

Formulation

Liquid in PBS containing 50% glycerol, 0.5% BSA and 0.02% sodium azide.

Basic Information

Clonality

Polyclonal

Immunogen Information

Immunogen

The antiserum was produced against synthesized peptide derived from human CD83. AA range: 101-150

Specificity

CD83 Polyclonal Antibody detects endogenous levels of CD83 protein.

Target Information

Gene name CD83

Protein Name CD83 antigen

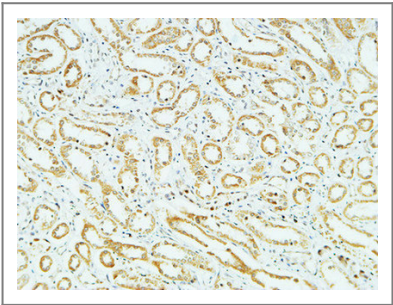
Organism	Gene ID	UniProt ID
Human	9308 ;	Q01151 ;
Mouse		O88324 ;

Cellular Localization Membrane; Single-pass type I membrane protein.

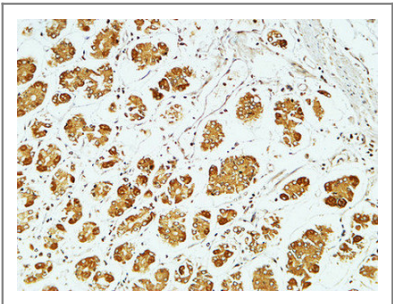
Tissue specificity Expressed by activated lymphocytes, Langerhans cells and interdigitating reticulum cells.

Function Function:May play a significant role in antigen presentation or the cellular interactions that follow lymphocyte activation.,online information:CD83 antigen,similarity:Contains 1 Ig-like V-type (immunoglobulin-like) domain.,subunit:Monomer.,tissue specificity:Expressed by activated lymphocytes, Langerhans cells and interdigitating reticulum cells.,

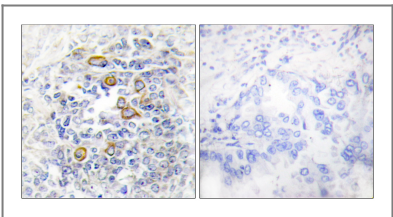
Validation Data



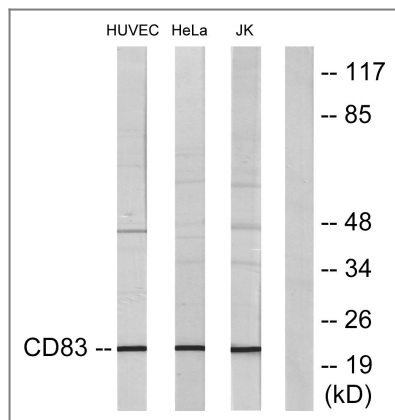
Immunohistochemical analysis of paraffin-embedded Human kidney. 1, Antibody was diluted at 1:400(4° overnight). 2, High-pressure and temperature EDTA, pH8.0 was used for antigen retrieval. 3,Secondary antibody was diluted at 1:200(room temperature, 30min).



Immunohistochemical analysis of paraffin-embedded Human stomach. 1, Antibody was diluted at 1:400(4° overnight). 2, High-pressure and temperature EDTA, pH8.0 was used for antigen retrieval. 3,Secondary antibody was diluted at 1:200(room temperature, 30min).



Immunohistochemistry analysis of paraffin-embedded human lung carcinoma, using CD83 Antibody. The picture on the right is blocked with the synthesized peptide.



Western blot analysis of lysates from HepG2 cells, HUVEC cells, HeLa cells, and Jurkat cells, using CD83 Antibody. The lane on the right is blocked with the synthesized peptide.

Contact information

Orders: order@immunoway.com
 Support: tech@immunoway.com
 Telephone: 877-594-3616 (Toll Free), 408-747-0185
 Website: <http://www.immunoway.com>
 Address: 2200 Ringwood Ave San Jose, CA 95131 USA



Please scan the QR code to access additional product information:
CD83 Rabbit pAb

For Research Use Only. Not for Use in Diagnostic Procedures.

[Antibody](#) | [ELISA Kits](#) | [Protein](#) | [Reagents](#)