

## CD32 Rabbit pAb

CatalogNo: YT0755

### Key Features

#### Host Species

- Rabbit

#### Reactivity

- Human

#### Applications

- WB,ELISA

#### MW

- 35kD (Observed)

#### Isotype

- IgG

### Storage

**Storage\*** -15°C to -25°C/1 year(Do not lower than -25°C)

**Formulation** Liquid in PBS containing 50% glycerol, 0.5% BSA and 0.02% sodium azide.

### Recommended Dilution Ratios

**WB 1:500-1:2000**

**ELISA 1:20000**

**Not yet tested in other applications.**

### Basic Information

**Clonality** Polyclonal

### Immunogen Information

**Immunogen** The antiserum was produced against synthesized peptide derived from human FCGR2A. AA range:241-290

**Specificity** CD32-A Polyclonal Antibody detects endogenous levels of CD32-A protein.

### Target Information

**Gene name** FCGR2A

**Protein Name** Low affinity immunoglobulin gamma Fc region receptor II-a

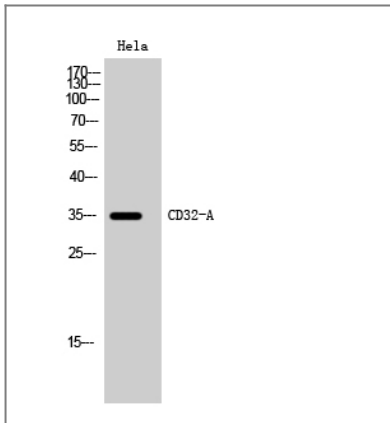
Organism	Gene ID	UniProt ID
Human	<a href="#">2212;</a>	<a href="#">P12318;</a>

**Cellular Localization** Cell membrane ; Single-pass type I membrane protein .

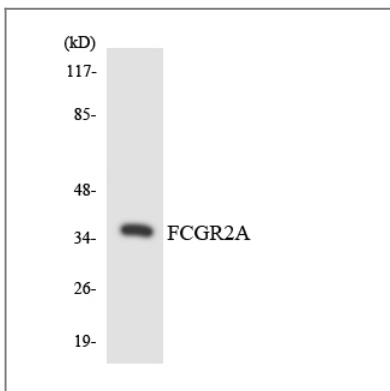
**Tissue specificity** Found on monocytes, neutrophils and eosinophil platelets.

**Function** Function: Binds to the Fc region of immunoglobulins gamma. Low affinity receptor. By binding to IgG it initiates cellular responses against pathogens and soluble antigens., similarity: Contains 2 Ig-like C2-type (immunoglobulin-like) domains., subunit: Interacts with INPP5D/SHIP1 and INPPL1/SHIP2, regulating its function., tissue specificity: Found on monocytes, neutrophils and eosinophil platelets.,

## Validation Data



Western Blot analysis of HeLa cells using CD32-A Polyclonal Antibody



Western blot analysis of the lysates from 293 cells using FCGR2A antibody.

## Contact information

Orders: order@immunoway.com  
Support: tech@immunoway.com  
Telephone: 877-594-3616 (Toll Free), 408-747-0185  
Website: http://www.immunoway.com  
Address: 2200 Ringwood Ave San Jose, CA 95131 USA



Please scan the QR code  
to access additional  
product information:  
**CD32 Rabbit pAb**

---

For Research Use Only. Not for Use in Diagnostic Procedures.

[Antibody](#) | [ELISA Kits](#) | [Protein](#) | [Reagents](#)