

## CD172b Rabbit pAb

CatalogNo: YT0732

### Key Features

#### Host Species

- Rabbit

#### Reactivity

- Human

#### Applications

- WB,ELISA

#### MW

- 48kD (Observed)

#### Isotype

- IgG

### Recommended Dilution Ratios

**WB 1:500-1:2000**

**ELISA 1:5000**

**Not yet tested in other applications.**

### Storage

**Storage\*** -15°C to -25°C/1 year(Do not lower than -25°C)

**Formulation** Liquid in PBS containing 50% glycerol, 0.5% BSA and 0.02% sodium azide.

### Basic Information

**Clonality** Polyclonal

### Immunogen Information

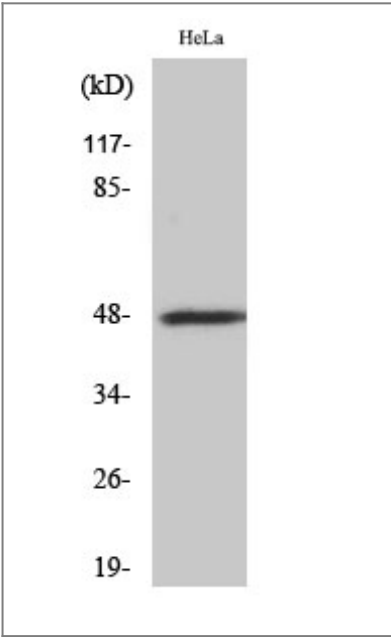
**Immunogen** The antiserum was produced against synthesized peptide derived from human SIRPB1. AA range:231-280

**Specificity** CD172b Polyclonal Antibody detects endogenous levels of CD172b protein.

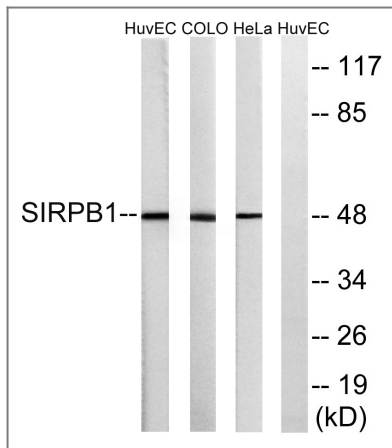
### Target Information

|                       |  |                         |                          |
|-----------------------|--|-------------------------|--------------------------|
| Gene name             | SIRPB1   |                         |                          |
| Protein Name          | Signal-regulatory protein beta-1   |                         |                          |
|                       | Organism   | Gene ID                 | UniProt ID               |
|                       | Human  | <a href="#">10326</a> ; | <a href="#">O00241</a> ; |
| Cellular Localization | Cell membrane ; Single-pass type I membrane protein .  |                         |                          |
| Tissue specificity    | Detected in monocytes and dendritic cells.   |                         |                          |
| Function              | Function:Immunoglobulin-like cell surface receptor involved in the negative regulation of receptor tyrosine kinase-coupled signaling processes.,Function:Immunoglobulin-like cell surface receptor involved in the negative regulation of receptor tyrosine kinase-coupled signaling processes. Participates also in the recruitment of tyrosine kinase SYK.,PTM:N-glycosylated.,similarity:Contains 1 Ig-like V-type (immunoglobulin-like) domain.,similarity:Contains 2 Ig-like C1-type (immunoglobulin-like) domains.,subunit:Interacts with TYROBP. This interaction results in the recruitment of SYK.,tissue specificity:Detected in monocytes and dendritic cells., |                         |                          |

| Validation Data



Western Blot analysis of various cells using CD172b Polyclonal Antibody



Western blot analysis of lysates from HeLa, COLO, and HUVEC cells, using SIRPB1 Antibody. The lane on the right is blocked with the synthesized peptide.

## Contact information

Orders: [order@immunoway.com](mailto:order@immunoway.com)  
 Support: [tech@immunoway.com](mailto:tech@immunoway.com)  
 Telephone: 877-594-3616 (Toll Free), 408-747-0185  
 Website: <http://www.immunoway.com>  
 Address: 2200 Ringwood Ave San Jose, CA 95131 USA



Please scan the QR code to access additional product information:  
**CD172b Rabbit pAb**

For Research Use Only. Not for Use in Diagnostic Procedures.

[Antibody](#) | [ELISA Kits](#) | [Protein](#) | [Reagents](#)