

CCDC4 Rabbit pAb

CatalogNo: YT0703

Key Features

Host Species

- Rabbit

Reactivity

- Human, Mouse

Applications

- WB, ELISA

MW

- 57kD (Observed)

Isotype

- IgG

Recommended Dilution Ratios

WB 1:500-1:2000

ELISA 1:40000

Not yet tested in other applications.

Storage

Storage*

-15°C to -25°C/1 year (Do not lower than -25°C)

Formulation

Liquid in PBS containing 50% glycerol, 0.5% BSA and 0.02% sodium azide.

Basic Information

Clonality

Polyclonal

Immunogen Information

Immunogen

The antiserum was produced against synthesized peptide derived from human BEND4. AA range: 371-420

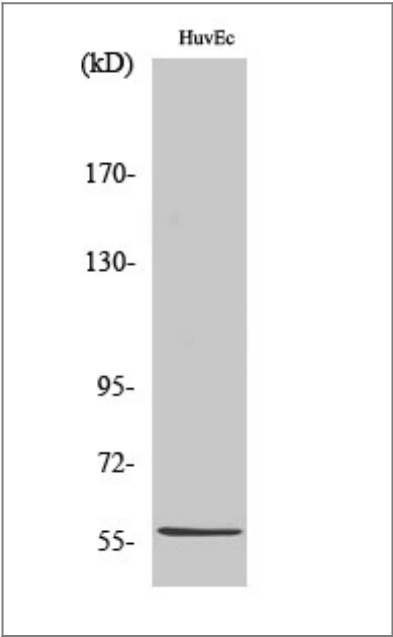
Specificity

CCDC4 Polyclonal Antibody detects endogenous levels of CCDC4 protein.

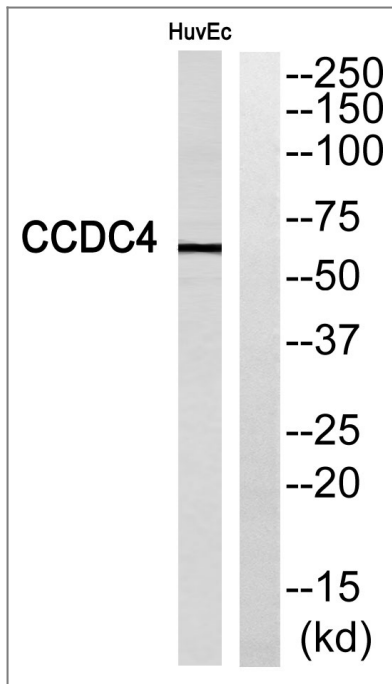
Target Information

Gene name	BEND4		
Protein Name	BEN domain-containing protein 4		
	Organism	Gene ID	UniProt ID
	Human	389206 ;	Q6ZU67 ;
	Mouse		P86174 ;
Tissue specificity	Prostatic carcinoma,Testis,		
Function	PTM:Phosphorylated upon DNA damage, probably by ATM or ATR.,similarity:Contains 1 BEN domain.,		

Validation Data



Western Blot analysis of various cells using CCDC4 Polyclonal Antibody



Western blot analysis of BEND4 Antibody. The lane on the right is blocked with the BEND4 peptide.

Contact information

Orders: order@immunoway.com
 Support: tech@immunoway.com
 Telephone: 877-594-3616 (Toll Free), 408-747-0185
 Website: <http://www.immunoway.com>
 Address: 2200 Ringwood Ave San Jose, CA 95131 USA



Please scan the QR code to access additional product information:
CCDC4 Rabbit pAb

For Research Use Only. Not for Use in Diagnostic Procedures.

[Antibody](#) | [ELISA Kits](#) | [Protein](#) | [Reagents](#)