

CBX6 Rabbit pAb

CatalogNo: YT0699

Orthogonal Validated 

Key Features

Host Species

- Rabbit

Reactivity

- Human, Mouse, Rat

Applications

- WB, IHC, IF, ELISA

MW

- 44kD (Observed)

Isotype

- IgG

Recommended Dilution Ratios

WB 1:500-1:2000**IHC 1:100-1:300****ELISA 1:20000****IF 1:50-200**

Storage

Storage* -15°C to -25°C/1 year (Do not lower than -25°C)**Formulation** Liquid in PBS containing 50% glycerol, 0.5% BSA and 0.02% sodium azide.

Basic Information

Clonality Polyclonal

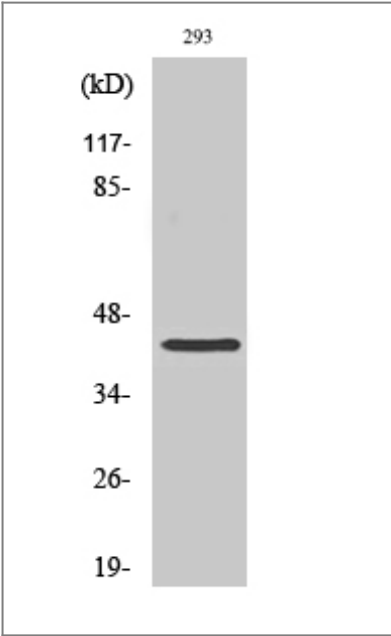
Immunogen Information

Immunogen The antiserum was produced against synthesized peptide derived from human CBX6. AA range: 10-59**Specificity** CBX6 Polyclonal Antibody detects endogenous levels of CBX6 protein.

Target Information

Gene name	CBX6		
Protein Name	Chromobox protein homolog 6		
	Organism	Gene ID	UniProt ID
	Human	23466;	O95503;
	Mouse	494448;	Q9DBY5;
Cellular Localization	Nucleus . Chromosome . Uniformly distributed in the nucleoplasm (PubMed:18927235). Localizes to the inactivated X chromosome in females (By similarity). .		
Tissue specificity	Lung,Uterus,		
Function	Function:Involved in maintaining the transcriptionally repressive state of genes. Modifies chromatin, rendering it heritably changed in its expressibility.,similarity:Contains 1 chromo domain.,subunit:Component of the chromatin-associated polycomb complex (PcG).,		

| Validation Data



Western Blot analysis of various cells using CBX6 Polyclonal Antibody cells nucleus extracted by Minute TM Cytoplasmic and Nuclear Fractionation kit (SC-003,Inventbiotech,MN,USA).

| Contact information

Orders: order@immunoway.com
Support: tech@immunoway.com
Telephone: 877-594-3616 (Toll Free), 408-747-0185
Website: http://www.immunoway.com
Address: 2200 Ringwood Ave San Jose, CA 95131 USA



Please scan the QR code to access additional product information:
CBX6 Rabbit pAb

