

CBP20 Rabbit pAb

CatalogNo: YT0696

Key Features

Host Species

- Rabbit

Reactivity

- Human, Mouse

Applications

- WB, IHC, IF, ELISA

MW

- 18kD (Observed)

Isotype

- IgG

Recommended Dilution Ratios

WB 1:500-1:2000

IHC 1:100-1:300

IF 1:200-1:1000

ELISA 1:5000

Not yet tested in other applications.

Storage

Storage*

-15°C to -25°C/1 year (Do not lower than -25°C)

Formulation

Liquid in PBS containing 50% glycerol, 0.5% BSA and 0.02% sodium azide.

Basic Information

Clonality

Polyclonal

Immunogen Information

Immunogen

The antiserum was produced against synthesized peptide derived from human NCBP2. AA range: 10-59

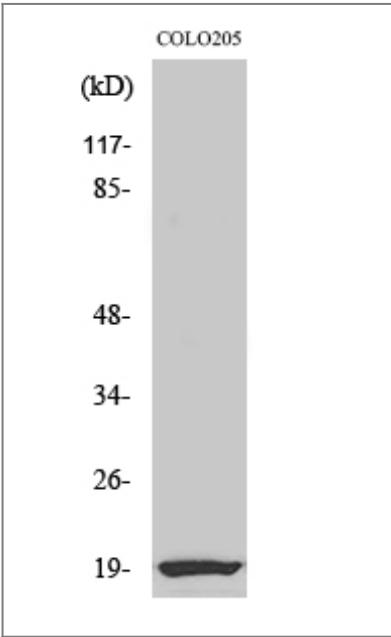
Specificity

CBP20 Polyclonal Antibody detects endogenous levels of CBP20 protein.

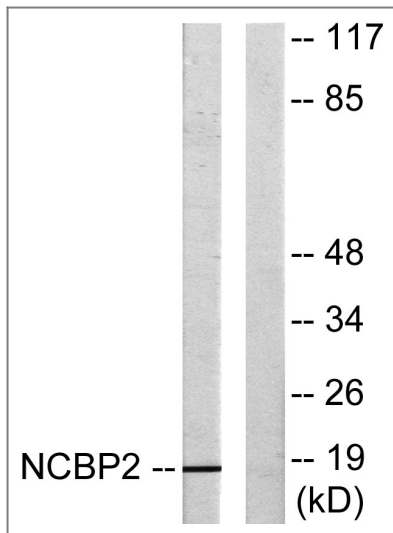
Target Information

| | | | |
|-----------------------|---|-------------------------|--------------------------|
| Gene name | NCBP2 | | |
| Protein Name | Nuclear cap-binding protein subunit 2 | | |
| | Organism | Gene ID | UniProt ID |
| | Human | 22916 ; | P52298 ; |
| | Mouse | 68092 ; | Q9CQ49 ; |
| Cellular Localization | Nucleus . Cytoplasm . | | |
| Tissue specificity | Cervix,Cervix carcinoma,Human small intestine, | | |
| Function | Function:Involved in mediating U snRNA export from the nucleus. Binds to 5' capped mRNA.,PTM:Phosphorylated upon DNA damage, probably by ATM or ATR.,similarity:Belongs to the RRM NCBP2 family.,similarity:Contains 1 RRM (RNA recognition motif) domain.,subunit:Found in a U snRNA export complex with RNUXA/PHAX, NCBP1, NCBP2, RAN, XPO1 and m7G-capped RNA (By similarity). Heterodimer with NCBP1. Is part of the exon junction complex (EJC) containing NCBP1, NCBP2, RNPS1, RBM8A, SRRM1, NXF1, UPF3B, UPF2, THOC4 and/or REFBP2., | | |

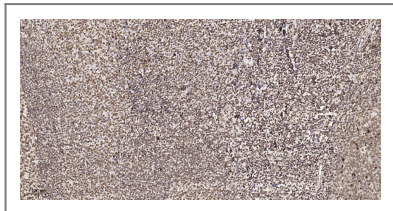
Validation Data



Western Blot analysis of various cells using CBP20 Polyclonal Antibody



Western blot analysis of lysates from COLO205 cells, using NCBP2 Antibody. The lane on the right is blocked with the synthesized peptide.



Immunohistochemical analysis of paraffin-embedded human tonsil. 1, Tris-EDTA, pH 9.0 was used for antigen retrieval. 2 Antibody was diluted at 1:200 (4° overnight). 3, Secondary antibody was diluted at 1:200 (room temperature, 45min).

Contact information

Orders: order@immunoway.com
 Support: tech@immunoway.com
 Telephone: 877-594-3616 (Toll Free), 408-747-0185
 Website: <http://www.immunoway.com>
 Address: 2200 Ringwood Ave San Jose, CA 95131 USA



Please scan the QR code to access additional product information:
CBP20 Rabbit pAb

For Research Use Only. Not for Use in Diagnostic Procedures.

[Antibody](#) | [ELISA Kits](#) | [Protein](#) | [Reagents](#)