

## CB1 Rabbit pAb

CatalogNo: YT0687

### Key Features

#### Host Species

- Rabbit

#### Reactivity

- Human, Mouse, Rat, Monkey

#### Applications

- WB, IHC, IF, ELISA

#### MW

- 53kD (Observed)

#### Isotype

- IgG

### Recommended Dilution Ratios

**WB 1:500-1:2000**

**IHC 1:100-1:300**

**IF 1:200-1:1000**

**ELISA 1:10000**

**Not yet tested in other applications.**

### Storage

#### Storage\*

-15°C to -25°C/1 year (Do not lower than -25°C)

#### Formulation

Liquid in PBS containing 50% glycerol, 0.5% BSA and 0.02% sodium azide.

### Basic Information

#### Clonality

Polyclonal

### Immunogen Information

#### Immunogen

The antiserum was produced against synthesized peptide derived from human CNR1. AA range: 151-200

#### Specificity

CB1 Polyclonal Antibody detects endogenous levels of CB1 protein.

## Target Information

**Gene name** CNR1

**Protein Name** Cannabinoid receptor 1

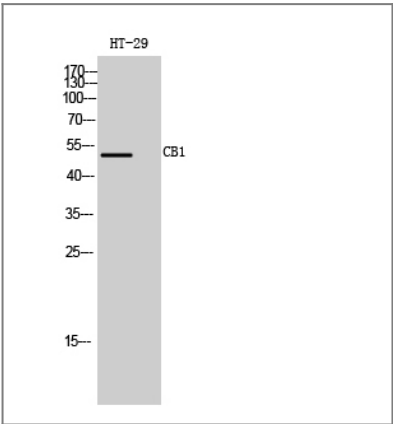
Organism	Gene ID	UniProt ID
Human	<a href="#">1268;</a>	<a href="#">P21554;</a>
Mouse	<a href="#">12801;</a>	<a href="#">P47746;</a>
Rat	<a href="#">25248;</a>	<a href="#">P20272;</a>

**Cellular Localization** Cell membrane ; Multi-pass membrane protein . Membrane raft . Mitochondrion outer membrane . Cell projection, axon . Cell junction, synapse, presynapse . Unexpectedly, in the mitochondria, the C-terminus is located in the mitochondrial intermembrane space, a compartment topologically considered as extracellular. In canonical seven-transmembrane G-protein coupled receptors, the C-terminus is cytosolic (By similarity). Found on presynaptic axon terminals in some GABAergic neurons in the somatosensory cortex (By similarity). .

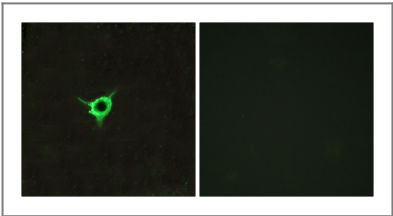
**Tissue specificity** Widely expressed, with highest levels in fetal and adult brain. Expression levels of isoform 2 and isoform 3 are much lower than those of isoform 1.

**Function** Function:Involved in cannabinoid-induced CNS effects. Acts by inhibiting adenylate cyclase. Could be a receptor for anandamide. Inhibits L-type Ca(2+) channel current. Isoform 2 and isoform 3 have altered ligand binding.,similarity:Belongs to the G-protein coupled receptor 1 family.,subunit:Interacts (via C-terminus) with CNRIP1.,tissue specificity:Widely expressed.,

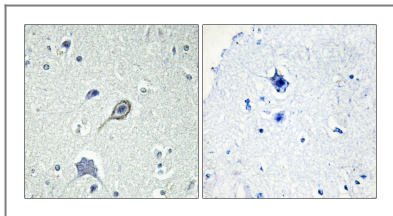
## Validation Data



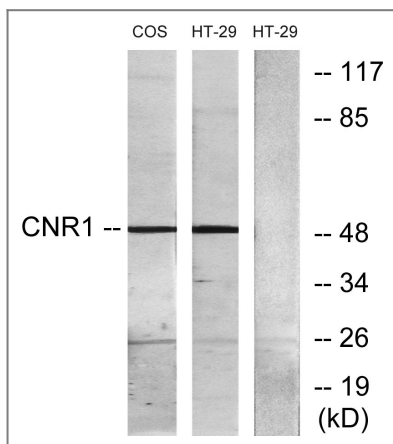
Western Blot analysis of HT-29 cells using CB1 Polyclonal Antibody



Immunofluorescence analysis of LOVO cells, using CNR1 Antibody. The picture on the right is blocked with the synthesized peptide.



Immunohistochemistry analysis of paraffin-embedded human brain tissue, using CNR1 Antibody. The picture on the right is blocked with the synthesized peptide.



Western blot analysis of lysates from HT-29 and COS7 cells, using CNR1 Antibody. The lane on the right is blocked with the synthesized peptide.

## Contact information

Orders: [order@immunoway.com](mailto:order@immunoway.com)  
 Support: [tech@immunoway.com](mailto:tech@immunoway.com)  
 Telephone: 877-594-3616 (Toll Free), 408-747-0185  
 Website: <http://www.immunoway.com>  
 Address: 2200 Ringwood Ave San Jose, CA 95131 USA



Please scan the QR code to access additional product information:  
**CB1 Rabbit pAb**

For Research Use Only. Not for Use in Diagnostic Procedures.

[Antibody](#) | [ELISA Kits](#) | [Protein](#) | [Reagents](#)