

## Catenin- $\alpha$ E/N Rabbit pAb

CatalogNo: YT0669

### Key Features

#### Host Species

- Rabbit

#### Reactivity

- Human, Mouse, Rat

#### Applications

- WB, IHC, IF, ELISA

#### MW

- 100kD (Observed)

#### Isotype

- IgG

### Recommended Dilution Ratios

**WB 1:500-1:2000**

**IHC 1:100-1:300**

**IF 1:200-1:1000**

**ELISA 1:5000**

**Not yet tested in other applications.**

### Storage

#### Storage\*

-15°C to -25°C/1 year (Do not lower than -25°C)

#### Formulation

Liquid in PBS containing 50% glycerol, 0.5% BSA and 0.02% sodium azide.

### Basic Information

#### Clonality

Polyclonal

### Immunogen Information

#### Immunogen

The antiserum was produced against synthesized peptide derived from human Catenin- $\alpha$ 1. AA range: 857-906

#### Specificity

Catenin- $\alpha$  E/N Polyclonal Antibody detects endogenous levels of Catenin- $\alpha$  E/N protein.

## | Target Information

**Gene name** CTNNA1/CTNNA2

**Protein Name** Catenin alpha-1/2

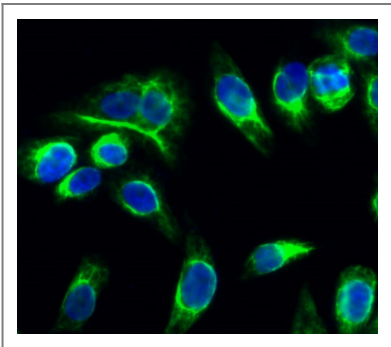
Organism	Gene ID	UniProt ID
Human	<a href="#">1495</a> ; <a href="#">1496</a> ;	<a href="#">P35221</a> ; <a href="#">P26232</a> ;
Mouse	<a href="#">12385</a> ; <a href="#">12386</a> ;	

**Cellular Localization** [Isoform 1]: Cytoplasm, cytoskeleton. Cell junction, adherens junction. Cell membrane; Peripheral membrane protein; Cytoplasmic side. Cell junction. Found at cell-cell boundaries and probably at cell-matrix boundaries.; [Isoform 3]: Cell membrane ; Peripheral membrane protein ; Cytoplasmic side .

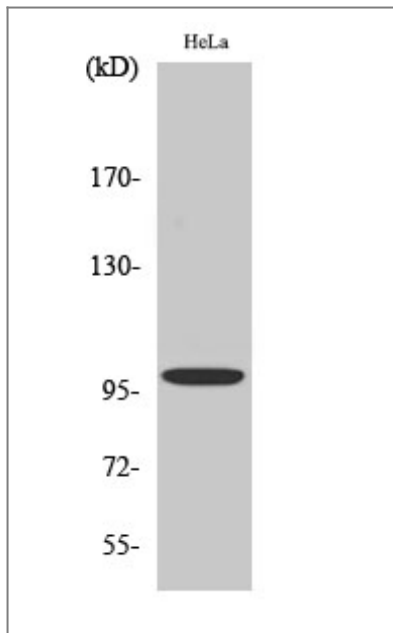
**Tissue specificity** Expressed ubiquitously in normal tissues.

**Function** Disease:Abnormalities of alpha-catenin are involved in the process of cancer invasion and metastasis.,Function:Associates with the cytoplasmic domain of a variety of cadherins. The association of catenins to cadherins produces a complex which is linked to the actin filament network, and which seems to be of primary importance for cadherins cell-adhesion properties. May play a crucial role in cell differentiation.,PTM:Sumoylated.,similarity:Belongs to the vinculin/alpha-catenin family.,subcellular location:Found at cell-cell boundaries and probably at cell-matrix boundaries.,subunit:Binds MLLT4 and F-actin (By similarity). Interacts directly with PSEN1 and CTNNB1 to form part of the PSEN1/cadherin/catenin adhesion complex. Interacts with ARHGAP21 and with JUB.,tissue specificity:Expressed ubiquitously in normal tissues.,

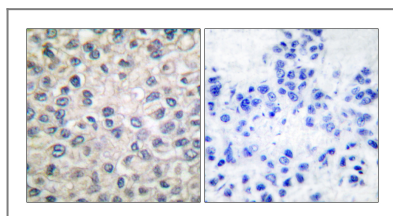
## | Validation Data



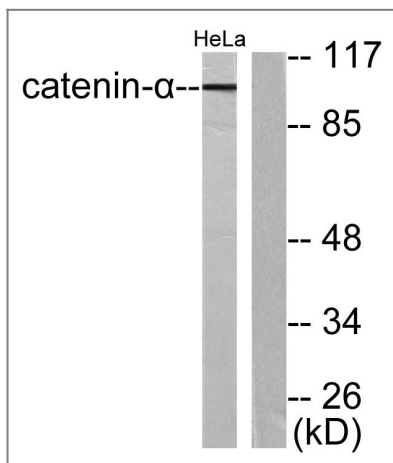
Immunofluorescence analysis of Hela cell. 1,Catenin-α E/N Polyclonal Antibody(green) was diluted at 1:200(4° overnight). 2, Goat Anti Rabbit Alexa Fluor 488 Catalog:RS3211 was diluted at 1:1000(room temperature, 50min). 3 DAPI(blue) 10min.



Western Blot analysis of various cells using Catenin-α E/N Polyclonal Antibody diluted at 1:500



Immunohistochemistry analysis of paraffin-embedded human breast carcinoma tissue, using Catenin-alpha1 Antibody. The picture on the right is blocked with the synthesized peptide.



Western blot analysis of lysates from HeLa cells, using Catenin-alpha1 Antibody. The lane on the right is blocked with the synthesized peptide.

## Contact information

Orders: [order@immunoway.com](mailto:order@immunoway.com)  
 Support: [tech@immunoway.com](mailto:tech@immunoway.com)  
 Telephone: 877-594-3616 (Toll Free), 408-747-0185  
 Website: <http://www.immunoway.com>  
 Address: 2200 Ringwood Ave San Jose, CA 95131 USA



Please scan the QR code  
 to access additional  
 product information:  
**Catenin-α E/N**  
**Rabbit pAb**