

Casein Kinase II β Rabbit pAb

CatalogNo: YT0644

Key Features

Host Species

- Rabbit

Reactivity

- Human, Mouse, Rat

Applications

- WB, IHC, IF, ELISA

MW

- 25kD (Observed)

Isotype

- IgG

Storage

Storage* -15°C to -25°C/1 year (Do not lower than -25°C)

Formulation Liquid in PBS containing 50% glycerol, 0.5% BSA and 0.02% sodium azide.

Recommended Dilution Ratios

WB 1:500-1:2000

IHC 1:100-1:300

ELISA 1:5000

IF 1:50-200

Basic Information

Clonality Polyclonal

Immunogen Information

Immunogen The antiserum was produced against synthesized peptide derived from human CKII-beta. AA range:166-215

Specificity Casein Kinase II β Polyclonal Antibody detects endogenous levels of Casein Kinase II β protein.

Target Information

Gene name CSNK2B

Protein Name Casein kinase II subunit beta

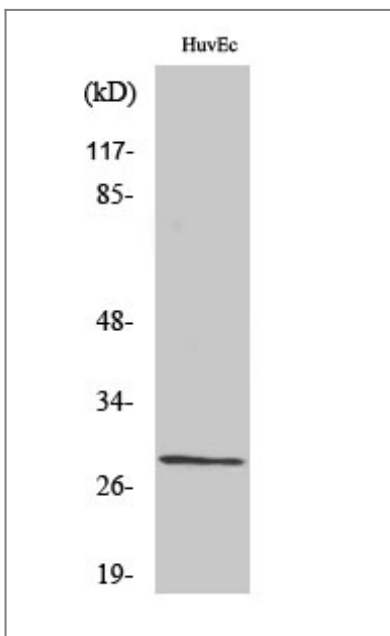
Organism	Gene ID	UniProt ID
Human	1460 ;	P67870 ;
Mouse	13001 ;	P67871 ;
Rat	81650 ;	P67874 ;

Cellular Localization nucleus,nucleoplasm,cytoplasm,cytosol,plasma membrane,protein kinase CK2 complex,PcG protein complex,extracellular exosome,

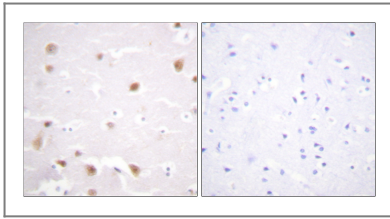
Tissue specificity Brain,Epithelium,

Function Function:Participates in Wnt signaling (By similarity). Plays a complex role in regulating the basal catalytic activity of the alpha subunit.,PTM:N-glycosylated.,PTM:Phosphorylated by alpha subunit.,similarity:Belongs to the casein kinase 2 subunit beta family.,similarity:Contains 1 UPAR/Ly6 domain.,subunit:Forms oligomer.,subunit:Tetramer composed of an alpha subunit, an alpha' subunit and two beta subunits. Interacts with TCTEX1D3 (By similarity). Interacts with CD163. Also component of a CK2-SPT16-SSRP1 complex composed of SSRP1, SUPT16H, CSNK2A1, CSNK2A2 and CSNK2B, the complex associating following UV irradiation.,

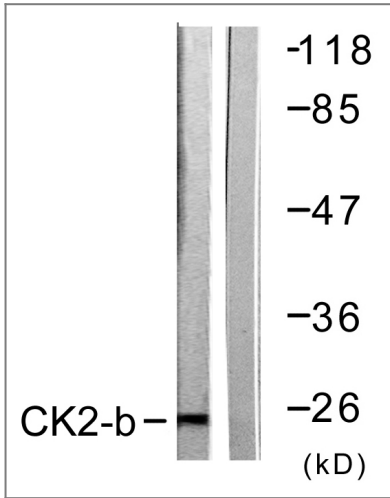
Validation Data



Western Blot analysis of various cells using Casein Kinase II β Polyclonal Antibody



Immunohistochemistry analysis of paraffin-embedded human brain tissue, using CKII-beta Antibody. The picture on the right is blocked with the synthesized peptide.



Western blot analysis of lysates from HUVEC cells, using CKII-beta Antibody. The lane on the right is blocked with the synthesized peptide.

Contact information

Orders: order@immunoway.com
Support: tech@immunoway.com
Telephone: 877-594-3616 (Toll Free), 408-747-0185
Website: <http://www.immunoway.com>
Address: 2200 Ringwood Ave San Jose, CA 95131 USA



Please scan the QR code to access additional product information:
Casein Kinase II β
Rabbit pAb

For Research Use Only. Not for Use in Diagnostic Procedures.

[Antibody](#) | [ELISA Kits](#) | [Protein](#) | [Reagents](#)