

CARD 11 Rabbit pAb

CatalogNo: YT0635

| Key Features

Host Species

- Rabbit

Reactivity

- Human, Mouse

Applications

- WB, IHC, IF, ELISA

MW

- 130kD (Observed)

Isotype

- IgG

| Recommended Dilution Ratios

WB 1:500-1:2000

IHC 1:100-1:300

IF 1:200-1:1000

ELISA 1:40000

Not yet tested in other applications.

| Storage

Storage*

-15°C to -25°C/1 year (Do not lower than -25°C)

Formulation

Liquid in PBS containing 50% glycerol, 0.5% BSA and 0.02% sodium azide.

| Basic Information

Clonality

Polyclonal

| Immunogen Information

Immunogen

The antiserum was produced against synthesized peptide derived from human CARD11. AA range: 10-59

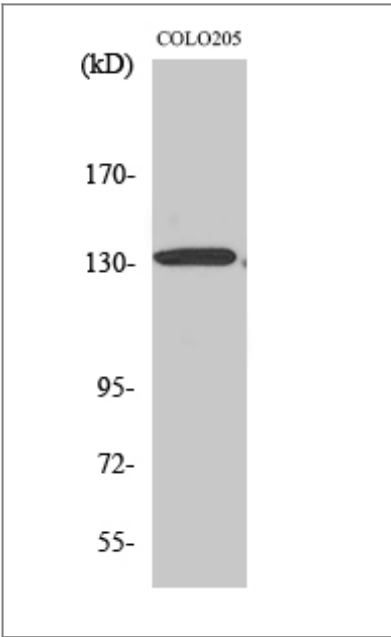
Specificity

CARD 11 Polyclonal Antibody detects endogenous levels of CARD 11 protein.

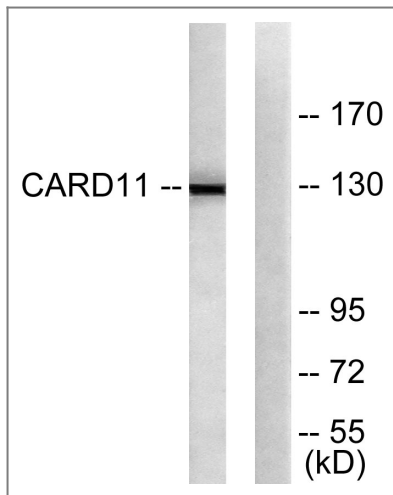
Target Information

Gene name	CARD11		
Protein Name	Caspase recruitment domain-containing protein 11		
	Organism	Gene ID	UniProt ID
	Human	84433 ;	Q9BXL7 ;
	Mouse	108723 ;	Q8CIS0 ;
Cellular Localization	Cytoplasm . Membrane raft . Colocalized with DPP4 in membrane rafts. .		
Tissue specificity	Detected in adult peripheral blood leukocytes, thymus, spleen and liver. Also found in promyelocytic leukemia HL-60 cells, chronic myelogenous leukemia K-562 cells, Burkitt's lymphoma Raji cells and colorectal adenocarcinoma SW480 cells. Not detected in HeLaS3, MOLT-4, A-549 and G431 cells.		
Function	Caution:Supposed to contain a SH3 domain which is not detected by PROSITE, Pfam or SMART.,Function:Activates NF-kappa-B via BCL10 and IKK. Stimulates the phosphorylation of BCL10.,similarity:Contains 1 CARD domain.,similarity:Contains 1 guanylate kinase-like domain.,similarity:Contains 1 PDZ (DHR) domain.,subunit:CARD11 and BCL10 bind to each other by CARD-CARD interaction.,tissue specificity:Detected in adult peripheral blood leukocytes, thymus, spleen and liver. Also found in promyelocytic leukemia HL-60 cells, chronic myelogenous leukemia K562 cells, Burkitt's lymphoma Raji cells and colorectal adenocarcinoma SW480 cells. Not detected in HeLa S3, Molt-4, A549 and G431 cells.,		

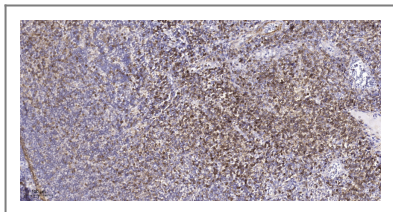
Validation Data



Western Blot analysis of various cells using CARD 11 Polyclonal Antibody



Western blot analysis of lysates from COLO205 cells, using CARD11 Antibody. The lane on the right is blocked with the synthesized peptide.



Immunohistochemical analysis of paraffin-embedded human tonsil. 1, Tris-EDTA, pH 9.0 was used for antigen retrieval. 2 Antibody was diluted at 1:200 (4° overnight). 3, Secondary antibody was diluted at 1:200 (room temperature, 45min).

Contact information

Orders: order@immunoway.com
 Support: tech@immunoway.com
 Telephone: 877-594-3616 (Toll Free), 408-747-0185
 Website: <http://www.immunoway.com>
 Address: 2200 Ringwood Ave San Jose, CA 95131 USA



Please scan the QR code to access additional product information:
CARD 11 Rabbit pAb

For Research Use Only. Not for Use in Diagnostic Procedures.

[Antibody](#) | [ELISA Kits](#) | [Protein](#) | [Reagents](#)