

## CaMKI $\beta$ Rabbit pAb

CatalogNo: YT0629

Orthogonal Validated 

### Key Features

#### Host Species

- Rabbit

#### Reactivity

- Human, Mouse, Rat

#### Applications

- WB, IHC, IF, ELISA

#### MW

- 38kD (Observed)

#### Isotype

- IgG

### Recommended Dilution Ratios

WB 1:500-1:2000

IHC 1:100-1:300

ELISA 1:10000

IF 1:50-200

### Storage

**Storage\*** -15°C to -25°C/1 year (Do not lower than -25°C)**Formulation** Liquid in PBS containing 50% glycerol, 0.5% BSA and 0.02% sodium azide.

### Basic Information

**Clonality** Polyclonal

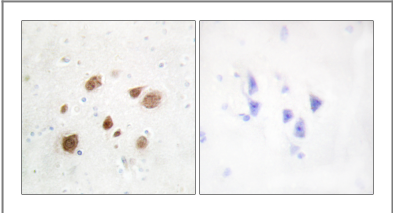
### Immunogen Information

**Immunogen** The antiserum was produced against synthesized peptide derived from human CaMK1-beta. AA range: 161-210**Specificity** CaMKI $\beta$  Polyclonal Antibody detects endogenous levels of CaMKI $\beta$  protein.

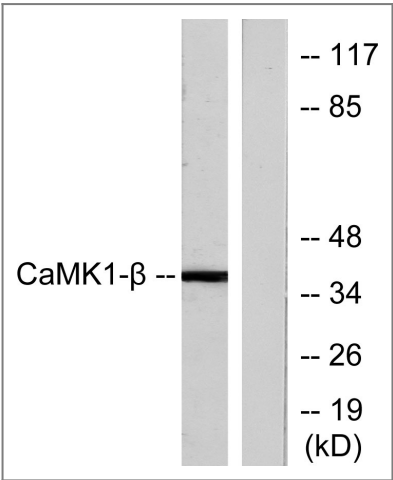
### Target Information

Gene name	PNCK		
Protein Name	Calcium/calmodulin-dependent protein kinase type 1B		
	Organism	Gene ID	UniProt ID
	Human	<a href="#">139728;</a>	<a href="#">Q6P2M8;</a>
	Mouse	<a href="#">93843;</a>	<a href="#">Q9QYK9;</a>
	Rat	<a href="#">29660;</a>	<a href="#">O70150;</a>
Cellular Localization	Cytoplasm . Nucleus .		
Tissue specificity	Brain,Liver,Placenta,Thalamus,		
Function	Catalytic activity:ATP + a protein = ADP + a phosphoprotein.,enzyme regulation:Activated by Ca(2+)/calmodulin.,Function:Calcium/calmodulin-dependent protein kinase belonging to a proposed calcium-triggered signaling cascade. In vitro phosphorylates CREB1 and SYN1/synapsin I. Phosphorylates and activates CAMK1.,PTM:Phosphorylated by CAMKK1.,similarity:Belongs to the protein kinase superfamily.,similarity:Belongs to the protein kinase superfamily. CAMK Ser/Thr protein kinase family. CaMK subfamily.,similarity:Contains 1 protein kinase domain.,		

| Validation Data



Immunohistochemistry analysis of paraffin-embedded human brain tissue, using CaMK1-beta Antibody. The picture on the right is blocked with the synthesized peptide.



Western blot analysis of lysates from LOVO cells, treated with H2O2 100uM 30', using CaMK1-beta Antibody. The lane on the right is blocked with the synthesized peptide.

| Contact information

Orders: order@immunoway.com  
Support: tech@immunoway.com  
Telephone: 877-594-3616 (Toll Free), 408-747-0185  
Website: <http://www.immunoway.com>  
Address: 2200 Ringwood Ave San Jose, CA 95131 USA



Please scan the QR code  
to access additional  
product information:

**CaMKI $\beta$  Rabbit pAb**

---

For Research Use Only. Not for Use in Diagnostic Procedures.

[Antibody](#) | [ELISA Kits](#) | [Protein](#) | [Reagents](#)