

Calregulin Rabbit pAb

CatalogNo: YT0620

Orthogonal Validated 

Key Features

Host Species

- Rabbit

Reactivity

- Human, Mouse, Rat, Monkey

Applications

- WB, FC, IHC, IF, ELISA

MW

- 48kD (Observed)

Isotype

- IgG

Recommended Dilution Ratios

WB 1:500-2000**Flow Cyt 1:50-200****IHC 1:100-500****IF/ICC 1:100-500****ELISA 1:5000-20000**

Storage

Storage*

-15°C to -25°C/1 year (Do not lower than -25°C)

Formulation

Liquid in PBS containing 50% glycerol, 0.5% BSA and 0.02% sodium azide.

Basic Information

Clonality

Polyclonal

Immunogen Information

Immunogen

The antiserum was produced against synthesized peptide derived from human CALR. AA range: 21-70

Specificity

Calregulin Polyclonal Antibody detects endogenous levels of Calregulin protein.

| Target Information

Gene name CALR

Protein Name Calreticulin

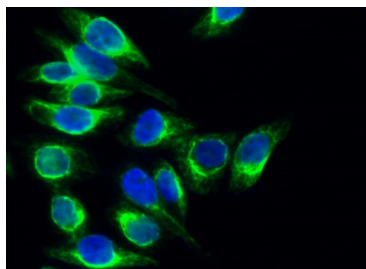
Organism	Gene ID	UniProt ID
Human	811 ;	P27797 ;
Mouse	12317 ;	P14211 ;
Rat	64202 ;	P18418 ;

Cellular Localization Endoplasmic reticulum lumen . Cytoplasm, cytosol . Secreted, extracellular space, extracellular matrix . Cell surface . Sarcoplasmic reticulum lumen . Cytoplasmic vesicle, secretory vesicle, Cortical granule . Cytolytic granule . Also found in cell surface (T cells), cytosol and extracellular matrix (PubMed:10358038). During oocyte maturation and after parthenogenetic activation accumulates in cortical granules. In pronuclear and early cleaved embryos localizes weakly to cytoplasm around nucleus and more strongly in the region near the cortex (By similarity). In cortical granules of non-activated oocytes, is exocytosed during the cortical reaction in response to oocyte activation (By similarity). .

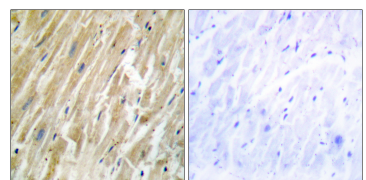
Tissue specificity Brain,Cajal-Retzius cell,Colon carcinoma,Eye,Fetal brain cortex,Keratinocyte,Liver,Pancreas

Function Caution:Was originally (PubMed:2332496) thought to be the 52 kDa Ro autoantigen.,Domain:Associates with PDIA3 through the tip of the extended arm formed by the P-domain.,Domain:Can be divided into a N-terminal globular domain, a proline-rich P-domain forming an elongated arm-like structure and a C-terminal acidic domain. The P-domain binds one molecule of calcium with high affinity, whereas the acidic C-domain binds multiple calcium ions with low affinity.,Domain:The interaction with glycans occurs through a binding site in the globular lectin domain.,Domain:The zinc binding sites are localized to the N-domain.,Function:Molecular calcium binding chaperone promoting folding, oligomeric assembly and quality control in the ER via the calreticulin/calnexin cycle. This lectin interacts transiently with almost all of the monoglucosylated glycoproteins that are synthesized in the ER. Interacts with the DNA-binding domain of NR3C1 and mediates its nuclear export.,mass spectrometry: PubMed:11149926,online information:Calreticulin,online information:Calreticulin entry,similarity:Belongs to the calreticulin family.,subcellular location:Also found in cell surface (T cells), cytosol and extracellular matrix. Associated with the lytic granules in the cytolytic T-lymphocytes.,subunit:Monomer. Component of an EIF2 complex at least composed of CUGBP1, CALR, CALR3, EIF2S1, EIF2S2, HSP90B1 and HSPA5. Interacts with PDIA3/Erp57 and with NR3C1.,

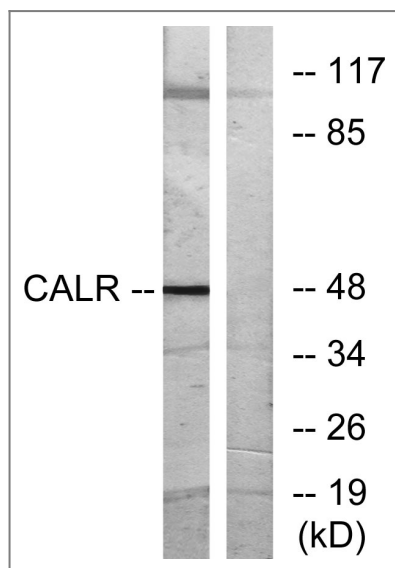
| Validation Data



Immunofluorescence analysis of Hela cell. 1, Calregulin Polyclonal Antibody (green) was diluted at 1:200 (4° overnight). 2, Goat Anti Rabbit Alexa Fluor 488 Catalog: RS3211 was diluted at 1:1000 (room temperature, 50min). 3 DAPI (blue) 10min.



Immunohistochemistry analysis of paraffin-embedded human heart tissue, using CALR Antibody. The picture on the right is blocked with the synthesized peptide.



Western blot analysis of lysates from COS7 cells, using CALR Antibody. The lane on the right is blocked with the synthesized peptide.

Contact information

Orders: order@immunoway.com
 Support: tech@immunoway.com
 Telephone: 877-594-3616 (Toll Free), 408-747-0185
 Website: <http://www.immunoway.com>
 Address: 2200 Ringwood Ave San Jose, CA 95131 USA



Please scan the QR code to access additional product information:
Calregulin Rabbit pAb