

CAF-1 p60 Rabbit pAb

CatalogNo: YT0605

| Key Features

Host Species

- Rabbit

Reactivity

- Human, Mouse, Rat

Applications

- WB, IHC, IF, ELISA

MW

- 61kD (Observed)

Isotype

- IgG

| Recommended Dilution Ratios

WB 1:500-1:2000

IHC 1:100-1:300

IF 1:200-1:1000

ELISA 1:20000

Not yet tested in other applications.

| Storage

Storage*

-15°C to -25°C/1 year (Do not lower than -25°C)

Formulation

Liquid in PBS containing 50% glycerol, 0.5% BSA and 0.02% sodium azide.

| Basic Information

Clonality

Polyclonal

| Immunogen Information

Immunogen

The antiserum was produced against synthesized peptide derived from human CAF1B. AA range: 71-120

Specificity

CAF-1 p60 Polyclonal Antibody detects endogenous levels of CAF-1 p60 protein.

| Target Information

Gene name CHAF1B

Protein Name Chromatin assembly factor 1 subunit B

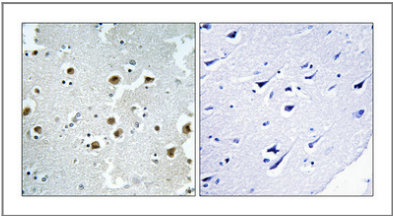
Organism	Gene ID	UniProt ID
Human	8208 ;	Q13112 ;
Mouse	110749 ;	Q9D0N7 ;

Cellular Localization Nucleus . Cytoplasm . DNA replication foci. Cytoplasmic in M phase.

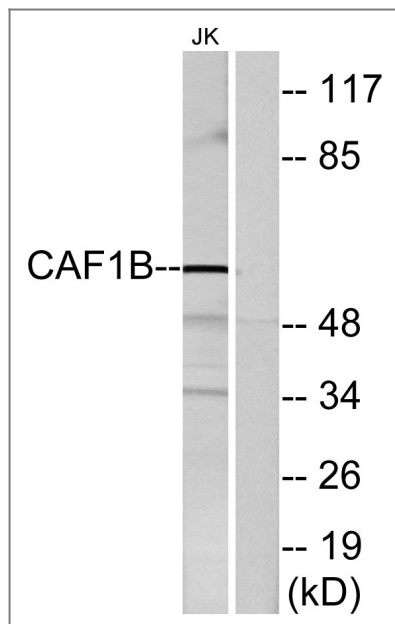
Tissue specificity Epithelium,Lymphoblast,Uterus,

Function developmental stage:Active complex is found in G1, S and G2 phases.,Function:Complex that is thought to mediate chromatin assembly in DNA replication and DNA repair. Assembles histone octamers onto replicating DNA in vitro. CAF-1 performs the first step of the nucleosome assembly process, bringing newly synthesized histones H3 and H4 to replicating DNA; histones H2A/H2B can bind to this chromatin precursor subsequent to DNA replication to complete the histone octamer. The CCR4-NOT complex functions as general transcription regulation complex.,PTM:Differentially phosphorylated during cell cycle. During mitosis the p60 subunit of inactive CAF-1 is hyperphosphorylated and displaced into the cytosol. Progressivly dephosphorylated from G1 to S and G2 phase. Phosphorylated p60 is recruited to chromatin undergoing DNA repair after UV irradiation in G1, S or G2 phases.,similarity:Belongs to the WD repeat HIR1 family.,similarity:Contains 7 WD repeats.,subcellular location:DNA replication foci. Cytoplasmic in M phase.,subunit:Subunit of the CAF-1 complex that contains RBBP4, CHAF1B and CHAF1A. CHAF1A binds directly to CHAF1B. Only minor amounts of RBBP4 are complexed with CHAF1A and CHAF1B in G1 phase. In G2 and S phase also monomeric CHAF1B is detected. Subunit of the CCR4-NOT core complex that contains CHAF1A, CHAF1B, CNOT1, CNOT2, CNOT3, CNOT4, CNOT6 and CNOT8.,

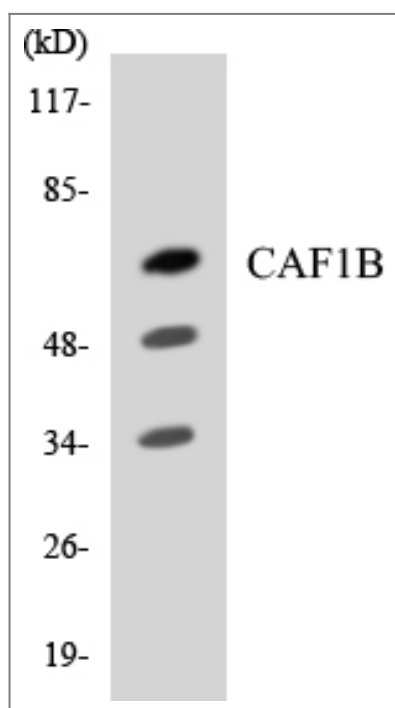
| Validation Data



Immunohistochemical analysis of paraffin-embedded Human brain. Antibody was diluted at 1:100(4° overnight). High-pressure and temperature Tris-EDTA,pH8.0 was used for antigen retrieval. Negative contrl (right) obtained from antibody was pre-absorbed by immunogen peptide.



Western blot analysis of lysates from Jurkat cells, using CAF1B Antibody. The lane on the right is blocked with the synthesized peptide.



Western blot analysis of the lysates from RAW264.7 cells using CAF1B antibody.

Contact information

Orders: order@immunoway.com
 Support: tech@immunoway.com
 Telephone: 877-594-3616 (Toll Free), 408-747-0185
 Website: <http://www.immunoway.com>
 Address: 2200 Ringwood Ave San Jose, CA 95131 USA



Please scan the QR code to access additional product information:
CAF-1 p60 Rabbit pAb