

Cadherin-24 Rabbit pAb

CatalogNo: YT0600

Key Features

Host Species

- Rabbit

Reactivity

- Human, Mouse

Applications

- IF, WB, ELISA

MW

- 88kD (Calculated)

Isotype

- IgG

Recommended Dilution Ratios

WB 1:500-2000

IF 1:200-1:1000

ELISA 1:10000

Not yet tested in other applications.

Storage

Storage*

-15°C to -25°C/1 year (Do not lower than -25°C)

Formulation

Liquid in PBS containing 50% glycerol, 0.5% BSA and 0.02% sodium azide.

Basic Information

Clonality

Polyclonal

Immunogen Information

Immunogen

The antiserum was produced against synthesized peptide derived from human CDH24. AA range: 81-130

Specificity

Cadherin-24 Polyclonal Antibody detects endogenous levels of Cadherin-24 protein.

Target Information

Gene name CDH24

Protein Name Cadherin-24

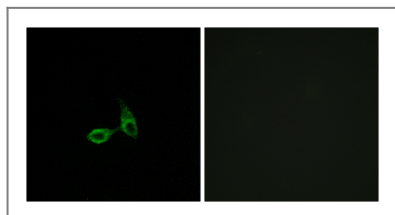
Organism	Gene ID	UniProt ID
Human	64403 ;	Q86UP0 ;
Mouse	239096 ;	Q6PFX6 ;

Cellular Localization Cell membrane ; Single-pass type I membrane protein .

Tissue specificity Blood,Colon,HeLa cells,Placenta,Salivary gland,Testis,Thyroid,

Function Function:Cadherins are calcium dependent cell adhesion proteins.,Function:Cadherins are calcium dependent cell adhesion proteins. They preferentially interact with themselves in a homophilic manner in connecting cells; cadherins may thus contribute to the sorting of heterogeneous cell types. Cadherin-24 mediate strong cell-cell adhesion.,similarity:Contains 5 cadherin domains.,subunit:Associates with alpha-, beta- and delta-catenins.,

| Validation Data



Immunofluorescence analysis of HepG2 cells, using CDH24 Antibody. The picture on the right is blocked with the synthesized peptide.

| Contact information

Orders: order@immunoway.com
Support: tech@immunoway.com
Telephone: 877-594-3616 (Toll Free), 408-747-0185
Website: <http://www.immunoway.com>
Address: 2200 Ringwood Ave San Jose, CA 95131 USA



Please scan the QR code to access additional product information:
Cadherin-24 Rabbit pAb

For Research Use Only. Not for Use in Diagnostic Procedures.

[Antibody](#) | [ELISA Kits](#) | [Protein](#) | [Reagents](#)