

## Cadherin-18 Rabbit pAb

CatalogNo: YT0595

### Key Features

#### Host Species

- Rabbit

#### Reactivity

- Human, Mouse

#### Applications

- WB, IHC, IF, ELISA

#### MW

- 88kD (Observed)

#### Isotype

- IgG

### Recommended Dilution Ratios

**WB 1:500-1:2000**

**IHC 1:100-1:300**

**IF 1:200-1:1000**

**ELISA 1:10000**

**Not yet tested in other applications.**

### Storage

#### Storage\*

-15°C to -25°C/1 year (Do not lower than -25°C)

#### Formulation

Liquid in PBS containing 50% glycerol, 0.5% BSA and 0.02% sodium azide.

### Basic Information

#### Clonality

Polyclonal

### Immunogen Information

#### Immunogen

The antiserum was produced against synthesized peptide derived from human CDH18. AA range: 101-150

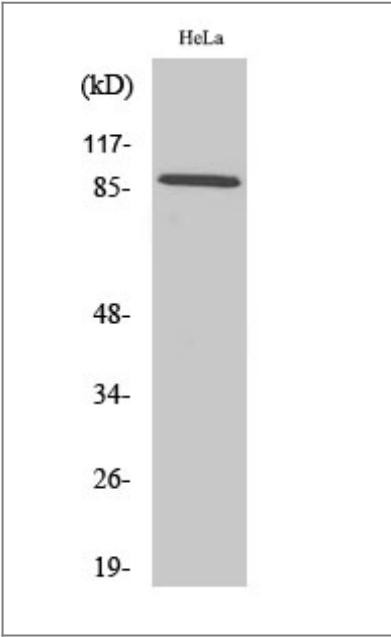
#### Specificity

Cadherin-18 Polyclonal Antibody detects endogenous levels of Cadherin-18 protein.

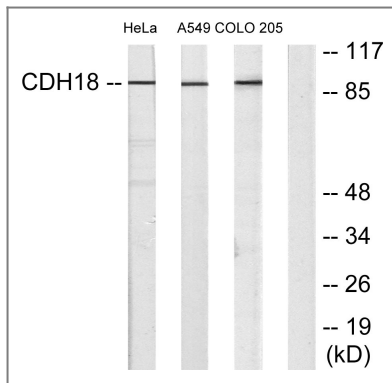
## | Target Information

Gene name	CDH18		
Protein Name	Cadherin-18		
	Organism	Gene ID	UniProt ID
	Human	<a href="#">1016</a> ;	<a href="#">Q13634</a> ;
Cellular Localization	Cell membrane; Single-pass type I membrane protein.		
Tissue specificity	Brain,Cerebellum,		
Function	Function:Cadherins are calcium dependent cell adhesion proteins. They preferentially interact with themselves in a homophilic manner in connecting cells; cadherins may thus contribute to the sorting of heterogeneous cell types.,similarity:Contains 5 cadherin domains.,		

## | Validation Data



Western Blot analysis of various cells using Cadherin-18 Polyclonal Antibody



Western blot analysis of lysates from HeLa, A549, and COLO205 cells, using CDH18 Antibody. The lane on the right is blocked with the synthesized peptide.

## Contact information

Orders: [order@immunoway.com](mailto:order@immunoway.com)  
 Support: [tech@immunoway.com](mailto:tech@immunoway.com)  
 Telephone: 877-594-3616 (Toll Free), 408-747-0185  
 Website: <http://www.immunoway.com>  
 Address: 2200 Ringwood Ave San Jose, CA 95131 USA



Please scan the QR code to access additional product information:  
**Cadherin-18 Rabbit pAb**

For Research Use Only. Not for Use in Diagnostic Procedures.

[Antibody](#) | [ELISA Kits](#) | [Protein](#) | [Reagents](#)