

Cables1 Rabbit pAb

CatalogNo: YT0588

Key Features

Host Species

- Rabbit

Reactivity

- Human, Mouse

Applications

- WB, IHC, IF, ELISA

MW

- 67kD (Observed)

Isotype

- IgG

Recommended Dilution Ratios

WB 1:500-1:2000

IHC 1:100-1:300

IF 1:200-1:1000

ELISA 1:20000

Not yet tested in other applications.

Storage

Storage*

-15°C to -25°C/1 year (Do not lower than -25°C)

Formulation

Liquid in PBS containing 50% glycerol, 0.5% BSA and 0.02% sodium azide.

Basic Information

Clonality

Polyclonal

Immunogen Information

Immunogen

The antiserum was produced against synthesized peptide derived from human Ik3-1. AA range: 561-610

Specificity

Cables1 Polyclonal Antibody detects endogenous levels of Cables1 protein.

| Target Information

Gene name CABLES1

Protein Name CDK5 and ABL1 enzyme substrate 1

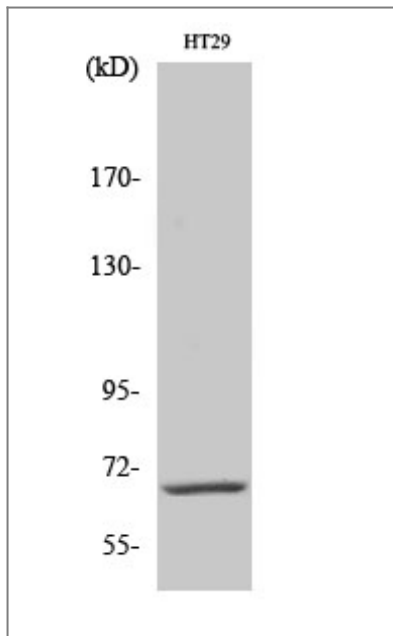
Organism	Gene ID	UniProt ID
Human	91768 ;	Q8TDN4 ;
Mouse	63955 ;	Q9ESJ1 ;

Cellular Localization Nucleus . Cytoplasm . Located in the cell body and proximal region of the developing axonal shaft of immature neurons. Located in axonal growth cone, but not in the distal part of the axon shaft or in dendritic growth cone of mature neurons (By similarity). .

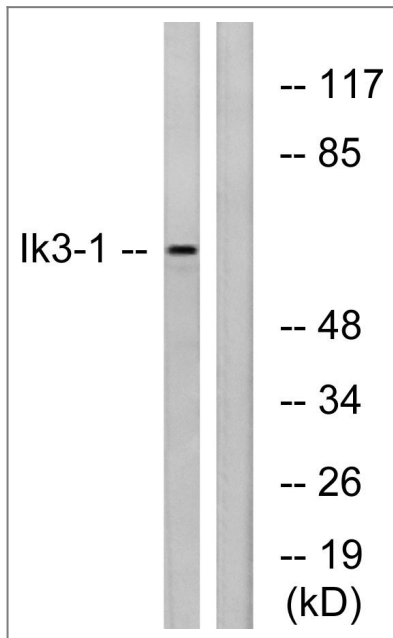
Tissue specificity Expressed in breast, pancreas, colon, head and neck (at protein level). Strongly decreased in more than half of cases of atypical endometrial hyperplasia and in more than 90% of endometrial cancers.

Function developmental stage:Expression in the endometrial epithelium fluctuates during the menstrual cycle, being greater during the secretory phase when compared with the proliferative phase.,Disease:Defects in CABLES1 are associated with some colon and squamous cancers.,Function:Cyclin-dependent kinase binding protein. Enhances cyclin-dependent kinase tyrosine phosphorylation by nonreceptor tyrosine kinases, such as that of CDK5 by activated ABL1, which leads to increased CDK5 activity and is critical for neuronal development, and that of CDK2 by WEE1, which leads to decreased CDK2 activity and growth inhibition. Positively affects neuronal outgrowth. Plays a role as a regulator for p53/p73-induced cell death.,induction:Up-regulated by progesterone and down-regulated by estrogen in benign endometrium.,PTM:Phosphorylated on Ser-313 by CCNE1/CDK3. Phosphorylated on serine/threonine residues by CDK5 and on tyrosine residues by ABL1. Also phosphorylated in vitro by CCNA1/CDK2, CCNE1/CDK2, CCNA1/CDK3 and CCNE1/CDK3.,similarity:Belongs to the cyclin family.,subcellular location:Located in the cell body and proximal region of the developing axonal shaft of immature neurons. Located in axonal growth cone, but not in the distal part of the axon shaft or in dendritic growth cone of mature neurons.,subunit:Found in a complex with p53/TP53. Found in a number of complexes with CDK2, CDK3, CDK5, ABL1, TDRD7, PCTK2, CCNA1, CCNE1 and TP73. Interacts with CDK2, CDK3, CDK5, ABL1 and TDRD7.,tissue specificity:Expressed in breast, pancreas, colon, head and neck (at protein level). Strongly decreased in more than half of cases of atypical endometrial hyperplasia and in more than 90% of endometrial cancers.,

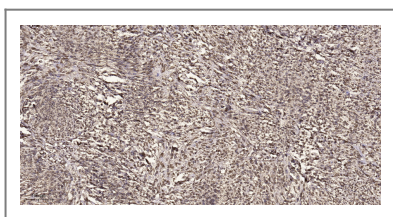
| Validation Data



Western Blot analysis of various cells using Cables1 Polyclonal Antibody diluted at 1:500



Western blot analysis of lysates from LOVO cells, using Ik3-1 Antibody. The lane on the right is blocked with the synthesized peptide.



Immunohistochemical analysis of paraffin-embedded human small intestinal carcinoma tissue. 1,primary Antibody was diluted at 1:200(4° overnight). 2, Sodium citrate pH 6.0 was used for antigen retrieval(>98°C,20min). 3,Secondary antibody was diluted at 1:200

Contact information

Orders: order@immunoway.com
 Support: tech@immunoway.com
 Telephone: 877-594-3616 (Toll Free), 408-747-0185
 Website: <http://www.immunoway.com>
 Address: 2200 Ringwood Ave San Jose, CA 95131 USA



Please scan the QR code to access additional product information:
Cables1 Rabbit pAb

