

## CA XII Rabbit pAb

CatalogNo: YT0580

### Key Features

#### Host Species

- Rabbit

#### Reactivity

- Human, Mouse, Rat

#### Applications

- WB, IHC, IF, ELISA

#### MW

- 40kD (Observed)

#### Isotype

- IgG

### Storage

**Storage\*** -15°C to -25°C/1 year (Do not lower than -25°C)

**Formulation** Liquid in PBS containing 50% glycerol, 0.5% BSA and 0.02% sodium azide.

### Recommended Dilution Ratios

**IHC: 100-300**

**WB 1:500-1:2000**

**ELISA 1:40000**

**IF 1:50-200**

### Basic Information

**Clonality** Polyclonal

### Immunogen Information

**Immunogen** The antiserum was produced against synthesized peptide derived from human CA12. AA range: 231-280

**Specificity** CA XII Polyclonal Antibody detects endogenous levels of CA XII protein.

### Target Information

**Gene name** CA12

**Protein Name** Carbonic anhydrase 12

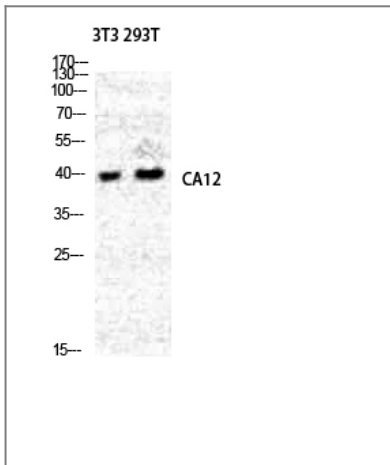
Organism	Gene ID	UniProt ID
Human	<a href="#">771</a> ;	<a href="#">O43570</a> ;
Mouse	<a href="#">76459</a> ;	<a href="#">Q8CI85</a> ;

**Cellular Localization** Membrane; Single-pass type I membrane protein. Cell membrane .

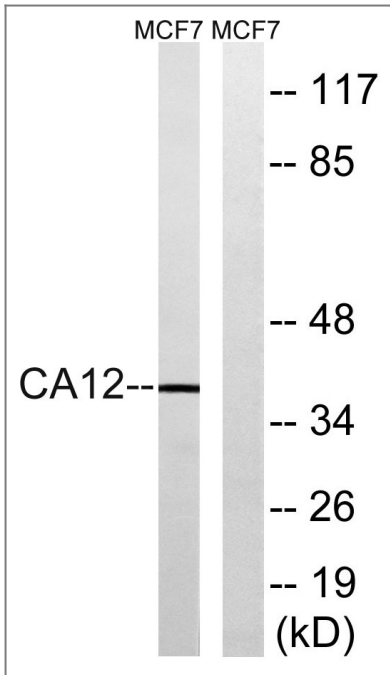
**Tissue specificity** Highly expressed in colon, kidney, prostate, intestine and activated lymphocytes. Expressed at much higher levels in the renal cell cancers than in surrounding normal kidney tissue. Moderately expressed in pancreas, ovary and testis. Expressed in sweat glands and bronchiolar epithelium (PubMed:26911677).

**Function** Catalytic activity:H(2)CO(3) = CO(2) + H(2)O.,cofactor:Zinc.,enzyme regulation:Inhibited by acetazolamide.,Function:Reversible hydration of carbon dioxide.,similarity:Belongs to the alpha-carbonic anhydrase family.,tissue specificity:Highly expressed in colon, kidney, prostate, intestine and activated lymphocytes. Expressed at much higher levels in the renal cell cancers than in surrounding normal kidney tissue. Moderately expressed in pancreas, ovary and testis.,

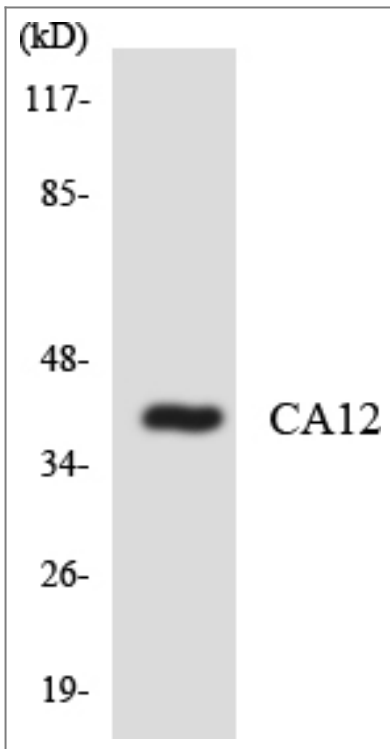
## Validation Data



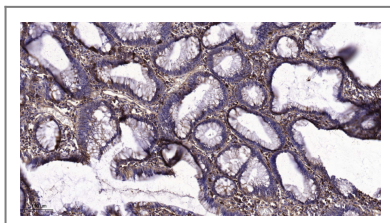
Western Blot analysis of NIH-3T3 293T cells using CA XII Polyclonal Antibody diluted at 1:2000



Western blot analysis of lysates from MCF-7 cells, using CA12 Antibody. The lane on the right is blocked with the synthesized peptide.



Western blot analysis of the lysates from COLO205 cells using CA12 antibody.



Immunohistochemical analysis of paraffin-embedded human colon cancer. 1, Tris-EDTA, pH9.0 was used for antigen retrieval. 2 Antibody was diluted at 1:200(4° overnight).3,Secondary antibody was diluted at 1:200(room temperature, 45min).

## Contact information

Orders: order@immunoway.com  
Support: tech@immunoway.com  
Telephone: 877-594-3616 (Toll Free), 408-747-0185  
Website: http://www.immunoway.com  
Address: 2200 Ringwood Ave San Jose, CA 95131 USA



Please scan the QR code  
to access additional  
product information:  
**CA XII Rabbit pAb**

---

For Research Use Only. Not for Use in Diagnostic Procedures.

[Antibody](#) | [ELISA Kits](#) | [Protein](#) | [Reagents](#)