

C/EBP ζ Rabbit pAb

CatalogNo: YT0559

Key Features

Host Species

- Rabbit

Reactivity

- Human, Mouse

Applications

- WB, IHC, IF, ELISA

MW

- 120kD (Observed)

Isotype

- IgG

Recommended Dilution Ratios

WB 1:500-1:2000

IHC 1:100-1:300

IF 1:200-1:1000

ELISA 1:20000

Not yet tested in other applications.

Storage

Storage*

-15°C to -25°C/1 year (Do not lower than -25°C)

Formulation

Liquid in PBS containing 50% glycerol, 0.5% BSA and 0.02% sodium azide.

Basic Information

Clonality

Polyclonal

Immunogen Information

Immunogen

The antiserum was produced against synthesized peptide derived from human CEBPZ. AA range: 1-50

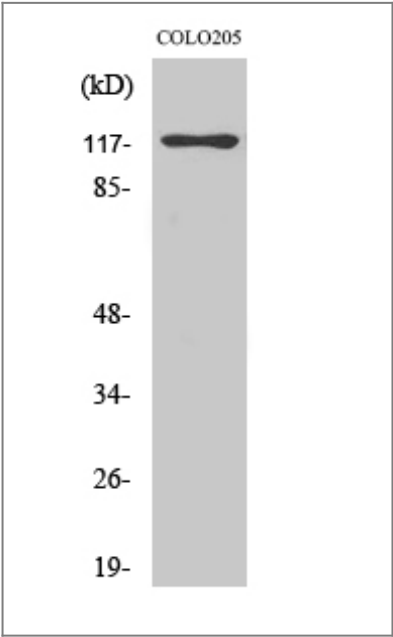
Specificity

C/EBP ζ Polyclonal Antibody detects endogenous levels of C/EBP ζ protein.

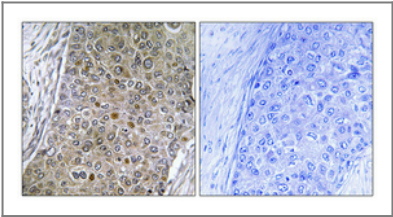
| Target Information

Gene name	CEBPZ		
Protein Name	CCAAT/enhancer-binding protein zeta		
	Organism	Gene ID	UniProt ID
	Human	10153 ;	Q03701 ;
	Mouse		P53569 ;
Cellular Localization	Nucleus.		
Tissue specificity	Epithelium,Testis,		
Function	Function:Stimulates transcription from the HSP70 promoter.,similarity:Belongs to the CBF/MAK21 family.,		

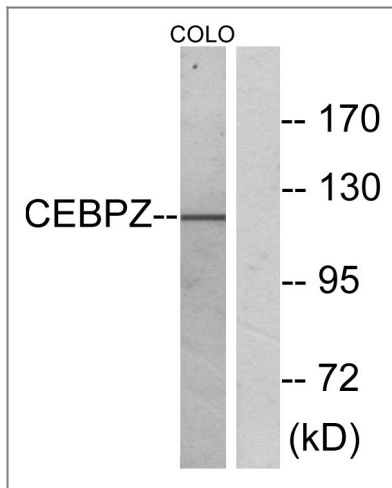
| Validation Data



Western Blot analysis of various cells using C/EBP ζ Polyclonal Antibody cells nucleus extracted by Minute TM Cytoplasmic and Nuclear Fractionation kit (SC-003, Invent biotech, MN, USA).



Immunohistochemical analysis of paraffin-embedded Human breast cancer. Antibody was diluted at 1:100(4° overnight). High-pressure and temperature Tris-EDTA,pH8.0 was used for antigen retrieval. Negative contrl (right) obtained from antibody was pre-absorbed by immunogen peptide.



Western blot analysis of lysates from COLO cells, using CEBPZ Antibody. The lane on the right is blocked with the synthesized peptide.

Contact information

Orders: order@immunoway.com
 Support: tech@immunoway.com
 Telephone: 877-594-3616 (Toll Free), 408-747-0185
 Website: <http://www.immunoway.com>
 Address: 2200 Ringwood Ave San Jose, CA 95131 USA



Please scan the QR code to access additional product information:
C/EBP ζ Rabbit pAb

For Research Use Only. Not for Use in Diagnostic Procedures.

[Antibody](#) | [ELISA Kits](#) | [Protein](#) | [Reagents](#)