

## BRAF35 Rabbit pAb

CatalogNo: YT0515

### Key Features

#### Host Species

- Rabbit

#### Reactivity

- Human, Mouse,

#### Applications

- WB, IHC, IF, ELISA

#### MW

- 36kD (Observed)

#### Isotype

- IgG

### Recommended Dilution Ratios

**WB 1:500-1:2000**

**IHC 1:100-1:300**

**IF 1:200-1:1000**

**ELISA 1:20000**

**Not yet tested in other applications.**

### Storage

#### Storage\*

-15°C to -25°C/1 year (Do not lower than -25°C)

#### Formulation

Liquid in PBS containing 50% glycerol, 0.5% BSA and 0.02% sodium azide.

### Basic Information

#### Clonality

Polyclonal

### Immunogen Information

#### Immunogen

The antiserum was produced against synthesized peptide derived from human HMG20B. AA range: 1-50

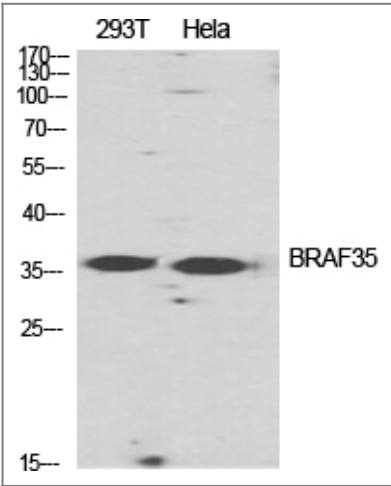
#### Specificity

BRAF35 Polyclonal Antibody detects endogenous levels of BRAF35 protein.

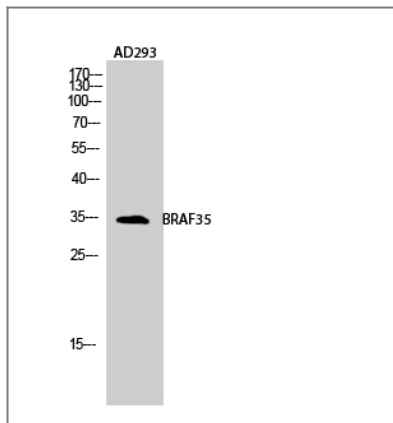
## Target Information

Gene name	HMG20B		
Protein Name	SWI/SNF-related matrix-associated actin-dependent regulator of chromatin subfamily E member 1-related		
	Organism	Gene ID	UniProt ID
	Human	<a href="#">10362</a> ;	<a href="#">Q9P0W2</a> ;
	Mouse		<a href="#">Q9Z104</a> ;
Cellular Localization	Nucleus. Chromosome. Localized to condensed chromosomes in mitosis in conjunction with BRCA2.		
Tissue specificity	Ubiquitously expressed in adult tissues.		
Function	Function:Required for correct progression through G2 phase of the cell cycle and entry into mitosis. Required for RCOR1/CoREST mediated repression of neuronal specific gene promoters.,sequence Caution:Translation N-terminally extended.,similarity:Contains 1 HMG box DNA-binding domain.,subcellular location:Localized to condensed chromosomes in mitosis in conjunction with BRCA2.,subunit:Component of a BHC histone deacetylase complex that contains HDAC1, HDAC2, HMG20B/BRAF35, AOF2/LSD1, RCOR1/CoREST and PHF21A/BHC80. The BHC complex may also contain ZMYM2, ZNF217, ZMYM3, GSE1 and GTF2I. Interacts with the BRCA2 tumor suppressor protein.,tissue specificity:Ubiquitously expressed in adult tissues.,		

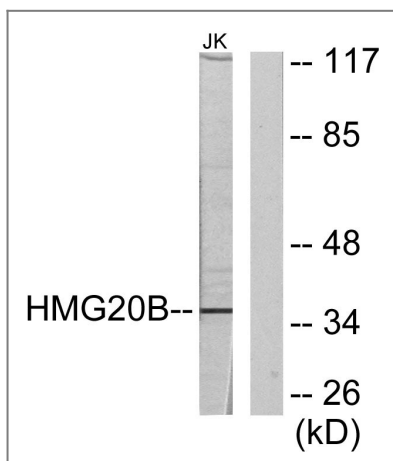
## Validation Data



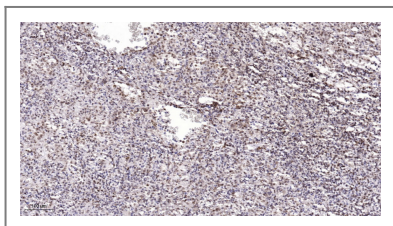
Western Blot analysis of various cells using BRAF35 Polyclonal Antibody diluted at 1:2000 cells nucleus extracted by Minute TM Cytoplasmic and Nuclear Fractionation kit (SC-003, Invent biotech, MN, USA).



Western Blot analysis of AD293 cells using BRAF35 Polyclonal Antibody diluted at 1:2000 cells nucleus extracted by Minute TM Cytoplasmic and Nuclear Fractionation kit (SC-003, Invent biotech, MN, USA).



Western blot analysis of lysates from Jurkat cells, using HMG20B Antibody. The lane on the right is blocked with the synthesized peptide.



Immunohistochemical analysis of paraffin-embedded human spleen. 1, Antibody was diluted at 1:200 (4° overnight). 2, Tris-EDTA, pH 9.0 was used for antigen retrieval. 3, Secondary antibody was diluted at 1:200 (room temperature, 45 min).

## Contact information

Orders: [order@immunoway.com](mailto:order@immunoway.com)  
 Support: [tech@immunoway.com](mailto:tech@immunoway.com)  
 Telephone: 877-594-3616 (Toll Free), 408-747-0185  
 Website: <http://www.immunoway.com>  
 Address: 2200 Ringwood Ave San Jose, CA 95131 USA



Please scan the QR code to access additional product information:  
**BRAF35 Rabbit pAb**