

BMP-8A Rabbit pAb

CatalogNo: YT0505

Key Features

Host Species

- Rabbit

Reactivity

- Human, Mouse

Applications

- WB, IHC, IF, ELISA

MW

- 45-55kD (Observed)

Isotype

- IgG

Recommended Dilution Ratios

WB 1:500-1:2000

IHC 1:100-1:300

IF 1:200-1:1000

ELISA 1:20000

Not yet tested in other applications.

Storage

Storage*

-15°C to -25°C/1 year (Do not lower than -25°C)

Formulation

Liquid in PBS containing 50% glycerol, 0.5% BSA and 0.02% sodium azide.

Basic Information

Clonality

Polyclonal

Immunogen Information

Immunogen

The antiserum was produced against synthesized peptide derived from human BMP8A. AA range: 253-302

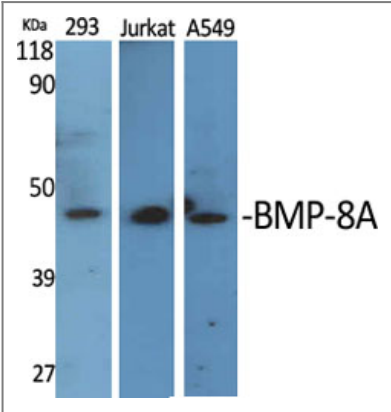
Specificity

BMP-8A Polyclonal Antibody detects endogenous levels of BMP-8A protein.

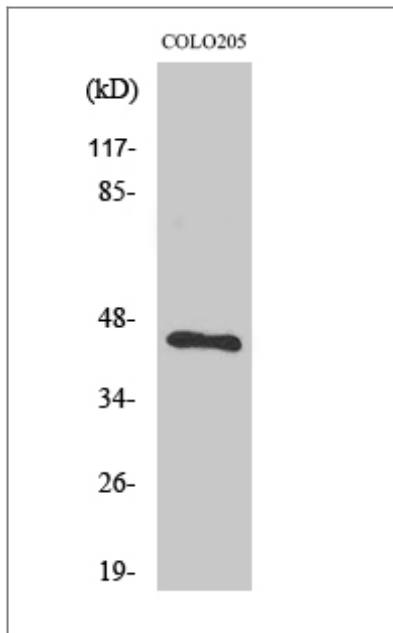
Target Information

| | | | |
|-----------------------|---|--------------------------|--------------------------|
| Gene name | BMP8A | | |
| Protein Name | Bone morphogenetic protein 8A | | |
| | Organism | Gene ID | UniProt ID |
| | Human | 353500 ; | Q7Z5Y6 ; |
| | Mouse | | P34821 ; |
| Cellular Localization | Secreted . | | |
| Tissue specificity | Brain,Hippocampus,Thyroid gland, | | |
| Function | Function:Induces cartilage and bone formation. May be the osteoinductive factor responsible for the phenomenon of epithelial osteogenesis. Plays a role in calcium regulation and bone homeostasis.,online information:Bone morphogenetic protein 8A entry,similarity:Belongs to the TGF-beta family.,subunit:Homodimer; disulfide-linked., | | |

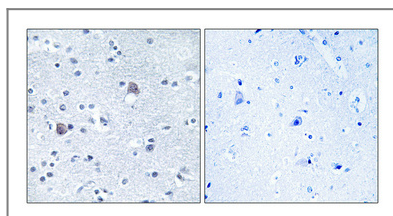
Validation Data



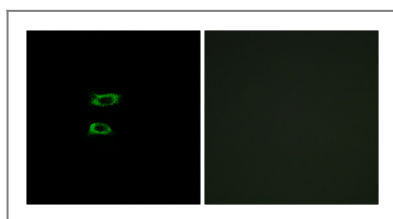
Western Blot analysis of various cells using BMP-8A Polyclonal Antibody



Western Blot analysis of COLO205 cells using BMP-8A Polyclonal Antibody



Immunohistochemical analysis of paraffin-embedded Human brain. Antibody was diluted at 1:100(4° overnight). High-pressure and temperature Tris-EDTA,pH8.0 was used for antigen retrieval. Negative contrl (right) obtained from antibody was pre-absorbed by immunogen peptide.



Immunofluorescence analysis of A549 cells, using BMP8A Antibody. The picture on the right is blocked with the synthesized peptide.

Contact information

Orders: order@immunoway.com
 Support: tech@immunoway.com
 Telephone: 877-594-3616 (Toll Free), 408-747-0185
 Website: <http://www.immunoway.com>
 Address: 2200 Ringwood Ave San Jose, CA 95131 USA



Please scan the QR code to access additional product information:
BMP-8A Rabbit pAb