

BMP-5 Rabbit pAb

CatalogNo: YT0501

Key Features

Host Species

- Rabbit

Reactivity

- Human, Mouse

Applications

- WB, IHC, IF, ELISA

MW

- 52kD (Observed)

Isotype

- IgG

Recommended Dilution Ratios

WB 1:500-1:2000

IHC 1:100-1:300

ELISA 1:40000

IF 1:50-200

Storage

Storage*

-15°C to -25°C/1 year (Do not lower than -25°C)

Formulation

Liquid in PBS containing 50% glycerol, 0.5% BSA and 0.02% sodium azide.

Basic Information

Clonality

Polyclonal

Immunogen Information

Immunogen

The antiserum was produced against synthesized peptide derived from human BMP-5. AA range: 114-163

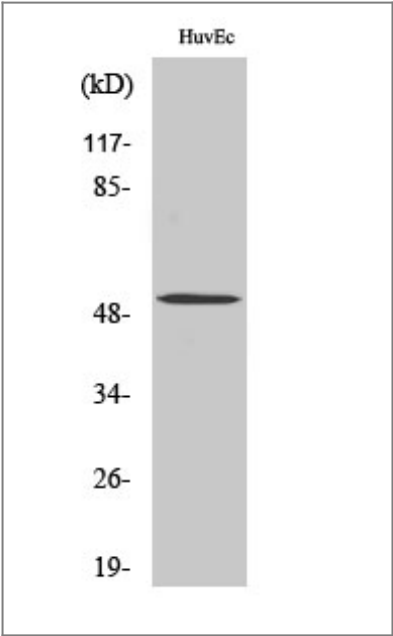
Specificity

BMP-5 Polyclonal Antibody detects endogenous levels of BMP-5 protein.

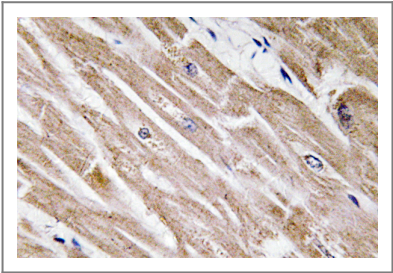
Target Information

Gene name	BMP5		
Protein Name	Bone morphogenetic protein 5		
	Organism	Gene ID	UniProt ID
	Human	653 ;	P22003 ;
	Mouse	12160 ;	P49003 ;
Cellular Localization	Secreted.		
Tissue specificity	Expressed in the lung and liver.		
Function	Function:Induces cartilage and bone formation.,online information:Bone morphogenetic protein 5 entry,similarity:Belongs to the TGF-beta family.,subunit:Homodimer; disulfide-linked.,tissue specificity:Expressed in the lung and liver.,		

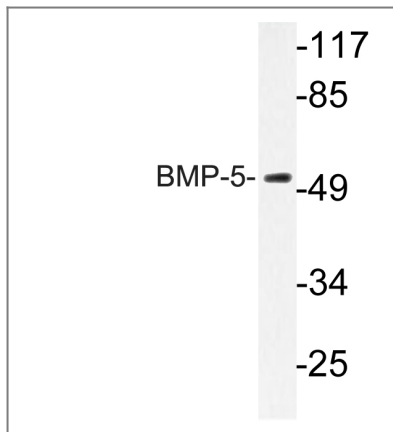
| Validation Data



Western Blot analysis of HeLa cells using BMP-5 Polyclonal Antibody diluted at 1:1000



Immunohistochemistry analysis of BMP-5 antibody in paraffin-embedded human heart tissue.



Western blot analysis of lysate from HUVEC cells, using BMP-5 antibody.

Contact information

Orders: order@immunoway.com
Support: tech@immunoway.com
Telephone: 877-594-3616 (Toll Free), 408-747-0185
Website: <http://www.immunoway.com>
Address: 2200 Ringwood Ave San Jose, CA 95131 USA



Please scan the QR code
to access additional
product information:
BMP-5 Rabbit pAb

For Research Use Only. Not for Use in Diagnostic Procedures.

[Antibody](#) | [ELISA Kits](#) | [Protein](#) | [Reagents](#)