

BET5 Rabbit pAb

CatalogNo: YT0487

Key Features

Host Species

- Rabbit

Reactivity

- Human, Mouse, Rat

Applications

- IHC, IF, ELISA

MW

- 17kD (Calculated)

Isotype

- IgG

Storage

Storage* -15°C to -25°C/1 year (Do not lower than -25°C)

Formulation Liquid in PBS containing 50% glycerol, 0.5% BSA and 0.02% sodium azide.

Recommended Dilution Ratios

IHC 1:100-1:300

ELISA 1:5000

IF 1:50-200

Basic Information

Clonality Polyclonal

Immunogen Information

Immunogen The antiserum was produced against synthesized peptide derived from human TRAPPC1. AA range:10-59

Specificity BET5 Polyclonal Antibody detects endogenous levels of BET5 protein.

Target Information

Gene name TRAPPC1

Protein Name Trafficking protein particle complex subunit 1

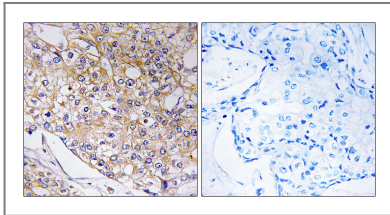
Organism	Gene ID	UniProt ID
Human	58485;	Q9Y5R8;
Mouse	245828;	Q5NCF2;
Rat	287427;	Q2KMM2;

Cellular Localization Golgi apparatus, cis-Golgi network . Endoplasmic reticulum .

Tissue specificity Uterus,

Function Function:May play a role in vesicular transport from endoplasmic reticulum to Golgi.,similarity:Belongs to the TRAPP small subunits family. BET5 subfamily.,subunit:Part of the multisubunit TRAPP (transport protein particle) complex.,

Validation Data



Immunohistochemistry analysis of paraffin-embedded human breast carcinoma tissue, using TRAPPC1 Antibody. The picture on the right is blocked with the synthesized peptide.

Contact information

Orders: order@immunoway.com
Support: tech@immunoway.com
Telephone: 877-594-3616 (Toll Free), 408-747-0185
Website: <http://www.immunoway.com>
Address: 2200 Ringwood Ave San Jose, CA 95131 USA



Please scan the QR code to access additional product information:
BET5 Rabbit pAb

For Research Use Only. Not for Use in Diagnostic Procedures.

[Antibody](#) | [ELISA Kits](#) | [Protein](#) | [Reagents](#)