

BET3 Rabbit pAb

CatalogNo: YT0486

Key Features

Host Species

- Rabbit

Reactivity

- Human, Mouse, Rat

Applications

- WB, IHC, IF, ELISA

MW

- 22kD (Observed)

Isotype

- IgG

Recommended Dilution Ratios

WB 1:500-1:2000

IHC 1:100-1:300

ELISA 1:5000

IF 1:50-200

Storage

Storage* -15°C to -25°C/1 year (Do not lower than -25°C)

Formulation Liquid in PBS containing 50% glycerol, 0.5% BSA and 0.02% sodium azide.

Basic Information

Clonality Polyclonal

Immunogen Information

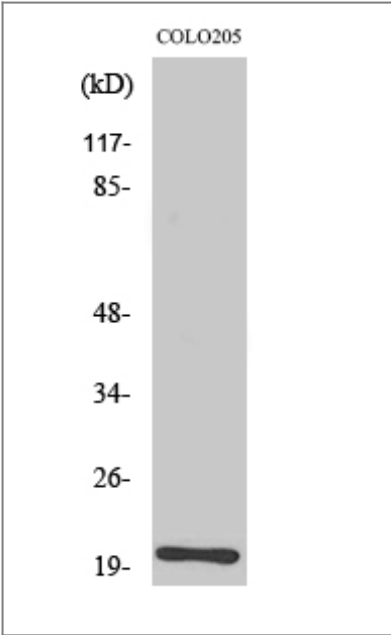
Immunogen The antiserum was produced against synthesized peptide derived from human TRAPPC3. AA range:131-180

Specificity BET3 Polyclonal Antibody detects endogenous levels of BET3 protein.

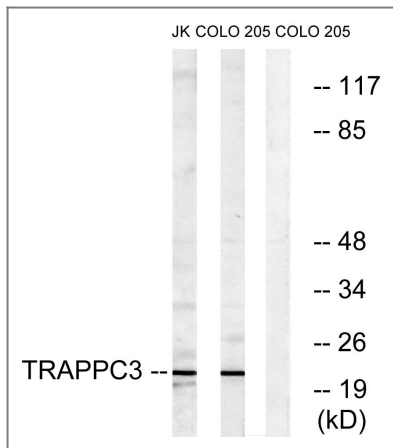
Target Information

Gene name	TRAPPC3		
Protein Name	Trafficking protein particle complex subunit 3		
	Organism	Gene ID	UniProt ID
	Human	27095;	O43617;
	Mouse	27096;	O55013;
	Rat	362599;	Q5U1Z2;
Cellular Localization	Golgi apparatus, cis-Golgi network . Endoplasmic reticulum .		
Tissue specificity	Colon,Leukemia,Placenta,		
Function	Function:May play a role in vesicular transport from endoplasmic reticulum to Golgi.,similarity:Belongs to the TRAPP small subunits family. BET3 subfamily.,subunit:Homodimer. Heterodimer with TRAPPC6A. Part of the multisubunit TRAPP (transport protein particle) complex.,		

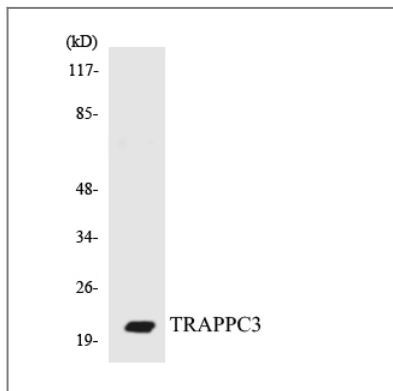
Validation Data



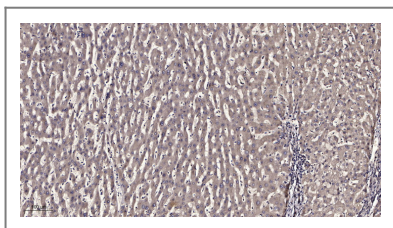
Western Blot analysis of various cells using BET3 Polyclonal Antibody diluted at 1:500



Western blot analysis of lysates from COLO and Jurkat cells, using TRAPPC3 Antibody. The lane on the right is blocked with the synthesized peptide.



Western blot analysis of the lysates from COLO205 cells using TRAPPC3 antibody.



Immunohistochemical analysis of paraffin-embedded human liver cancer. 1, Antibody was diluted at 1:200(4° overnight). 2, Tris-EDTA,pH9.0 was used for antigen retrieval. 3,Secondary antibody was diluted at 1:200(room temperature, 45min).

Contact information

Orders: order@immunoway.com
 Support: tech@immunoway.com
 Telephone: 877-594-3616 (Toll Free), 408-747-0185
 Website: <http://www.immunoway.com>
 Address: 2200 Ringwood Ave San Jose, CA 95131 USA



Please scan the QR code to access additional product information:
BET3 Rabbit pAb

For Research Use Only. Not for Use in Diagnostic Procedures.

[Antibody](#) | [ELISA Kits](#) | [Protein](#) | [Reagents](#)