

## BCAS3 Rabbit pAb

CatalogNo: YT0465

### Key Features

**Host Species**

- Rabbit

**Reactivity**

- Human, Mouse

**Applications**

- WB, ELISA

**MW**

- 100kD (Observed)

**Isotype**

- IgG

### Storage

**Storage\*** -15°C to -25°C/1 year (Do not lower than -25°C)**Formulation** Liquid in PBS containing 50% glycerol, 0.5% BSA and 0.02% sodium azide.

### Recommended Dilution Ratios

**WB 1:500-1:2000****ELISA 1:5000****Not yet tested in other applications.**

### Basic Information

**Clonality** Polyclonal

### Immunogen Information

**Immunogen** Synthesized peptide derived from BCAS3 . at AA range: 660-740**Specificity** BCAS3 Polyclonal Antibody detects endogenous levels of BCAS3 protein.

### Target Information

**Gene name** BCAS3

**Protein Name** Breast carcinoma-amplified sequence 3

Organism	Gene ID	UniProt ID
Human	<a href="#">54828;</a>	<a href="#">Q9H6U6;</a>
Mouse	<a href="#">192197;</a>	<a href="#">Q8CCN5;</a>

**Cellular Localization**

Nucleus . Cytoplasm . Cytoplasm, cytoskeleton . Preautophagosomal structure . Localizes in the cytoplasm in stationary cells. Translocates from the cytoplasm to the leading edge in motile cells. Colocalizes with microtubules and intermediate filaments in both stationary and motile cells (By similarity). Associates with chromatin. Recruited to estrogen receptor-induced promoters in a PELP1-dependent manner. The BCAS3:PHAF1 complex is recruited to the preautophagosomal structures adjacent to the damaged mitochondria upon mitophagy in a PRKN-PINK1 dependent manner (PubMed:33499712). .

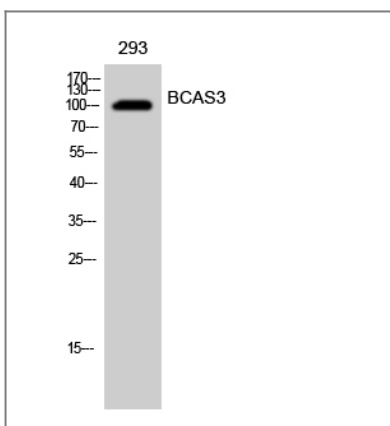
**Tissue specificity**

Expressed in stomach, liver, lung, kidney, prostate, testis, thyroid gland, adrenal gland, brain, heart, skeletal muscle, colon, spleen, small intestine, placenta, blood leukocyte and mammary epithelial cells. Expressed in undifferentiated ES cells. Expressed in blood islands and nascent blood vessels derived from differentiated ES cells into embryoid bodies (BD). Expressed in endothelial cells. Not detected in brain. Expressed in brain tumors (at protein level). Expressed in brain. Highly expressed in breast cancers and in glioma cell lines.

**Function**

developmental stage:Fetal.,Disease:A chromosomal aberration involving BCAS3 may be a cause of breast cancer. Translocation t(17;20)(q23;q13) with BCAS4.,similarity:Belongs to the WD repeat BCAS3 family.,similarity:Contains 3 WD repeats.,tissue specificity:Stomach, liver, lung, kidney, prostate, testis, thyroid gland, adrenal gland, brain, heart, skeletal muscle, colon, spleen, small intestine, placenta, blood leucocyte and mammary epithelial cells. Overexpressed in most breast cancer cell lines.,

## Validation Data



Western Blot analysis of 293 cells using BCAS3 Polyclonal Antibody cells nucleus extracted by Minute TM Cytoplasmic and Nuclear Fractionation kit (SC-003, Invent biotech, MN, USA).

## Contact information

Orders: order@immunoway.com  
Support: tech@immunoway.com  
Telephone: 877-594-3616 (Toll Free), 408-747-0185  
Website: <http://www.immunoway.com>  
Address: 2200 Ringwood Ave San Jose, CA 95131 USA



Please scan the QR code  
to access additional  
product information:  
**BCAS3 Rabbit pAb**

---

For Research Use Only. Not for Use in Diagnostic Procedures.

[Antibody](#) | [ELISA Kits](#) | [Protein](#) | [Reagents](#)