

## BCAS2 Rabbit pAb

CatalogNo: YT0464

### | Key Features

#### Host Species

- Rabbit

#### Reactivity

- Human, Mouse, Rat, Monkey

#### Applications

- WB, ELISA

#### MW

- 27kD (Observed)

#### Isotype

- IgG

### | Recommended Dilution Ratios

**WB 1:500-1:2000**

**ELISA 1:5000**

**Not yet tested in other applications.**

### | Storage

#### Storage\*

-15°C to -25°C/1 year (Do not lower than -25°C)

#### Formulation

Liquid in PBS containing 50% glycerol, 0.5% BSA and 0.02% sodium azide.

### | Basic Information

#### Clonality

Polyclonal

### | Immunogen Information

#### Immunogen

The antiserum was produced against synthesized peptide derived from human BCAS2. AA range: 176-225

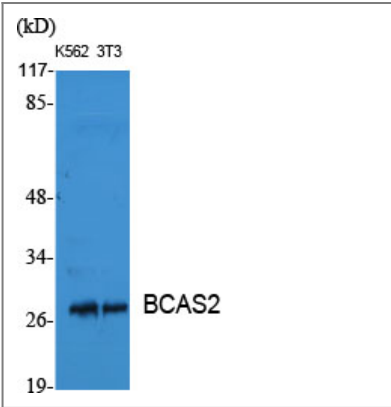
#### Specificity

BCAS2 Polyclonal Antibody detects endogenous levels of BCAS2 protein.

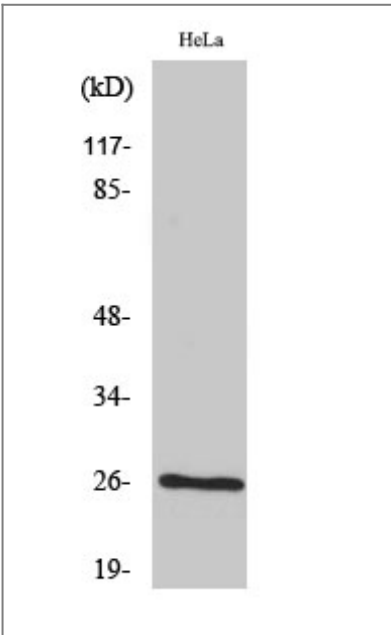
### | Target Information

Gene name	BCAS2		
Protein Name	Pre-mRNA-splicing factor SPF27		
	Organism	Gene ID	UniProt ID
	Human	<a href="#">10286;</a>	<a href="#">O75934;</a>
	Mouse	<a href="#">68183;</a>	<a href="#">Q9D287;</a>
Cellular Localization	Nucleus . Nucleus, nucleolus .		
Tissue specificity	Ubiquitously expressed.		
Function	Function:Involved in mRNA splicing.,similarity:Belongs to the SPF27 family.,subunit:Associated with the spliceosome.,tissue specificity:Ubiquitously expressed.,		

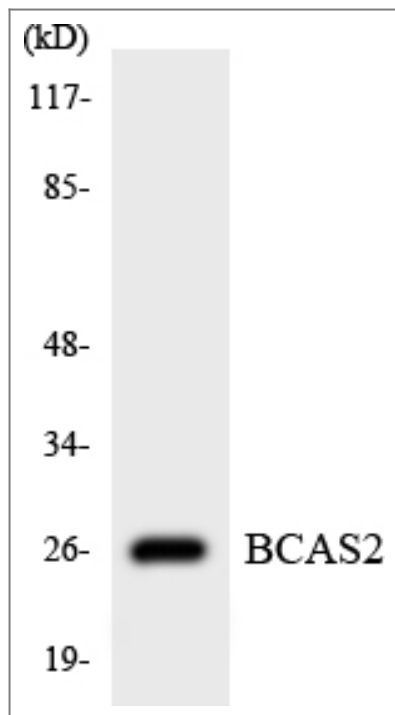
Validation Data



Western Blot analysis of various cells using BCAS2 Polyclonal Antibody diluted at 1:1000 cells nucleus extracted by Minute TM Cytoplasmic and Nuclear Fractionation kit (SC-003,Inventbiotech,MN,USA).



Western Blot analysis of COS7 cells using BCAS2 Polyclonal Antibody diluted at 1:1000 cells nucleus extracted by Minute TM Cytoplasmic and Nuclear Fractionation kit (SC-003,Inventbiotech,MN,USA).



Western blot analysis of the lysates from HUVEC cells using BCAS2 antibody.

## Contact information

Orders: [order@immunoway.com](mailto:order@immunoway.com)  
Support: [tech@immunoway.com](mailto:tech@immunoway.com)  
Telephone: 877-594-3616 (Toll Free), 408-747-0185  
Website: <http://www.immunoway.com>  
Address: 2200 Ringwood Ave San Jose, CA 95131 USA



Please scan the QR code  
to access additional  
product information:  
**BCAS2 Rabbit pAb**

For Research Use Only. Not for Use in Diagnostic Procedures.

[Antibody](#) | [ELISA Kits](#) | [Protein](#) | [Reagents](#)