

BAGE2 Rabbit pAb

CatalogNo: YT0442

Key Features

Host Species

- Rabbit

Reactivity

- Human

Applications

- IHC,IF,ELISA

MW

- 12kD (Calculated)

Isotype

- IgG

Storage

Storage* -15°C to -25°C/1 year(Do not lower than -25°C)

Formulation Liquid in PBS containing 50% glycerol, 0.5% BSA and 0.02% sodium azide.

Recommended Dilution Ratios

IHC 1:100-1:300

ELISA 1:10000

IF 1:50-200

Basic Information

Clonality Polyclonal

Immunogen Information

Immunogen The antiserum was produced against synthesized peptide derived from human BAGE2. AA range:41-90

Specificity BAGE2 Polyclonal Antibody detects endogenous levels of BAGE2 protein.

Target Information

Gene name BAGE2

Protein Name B melanoma antigen 2

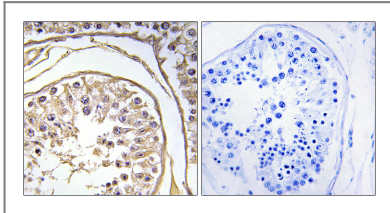
| Organism | Gene ID | UniProt ID |
|----------|-------------------------|--------------------------|
| Human | 85319 ; | Q86Y30 ; |

Cellular Localization Secreted .

Tissue specificity Not expressed in normal tissues except in testis. Expressed in 22% of melanomas, in bladder and lung carcinomas.

Function Function:Unknown. Candidate gene encoding tumor antigens.,miscellaneous:The ancestral BAGE gene was generated by juxtacentromeric reshuffling of the MLL3 gene. The BAGE family was expanded by juxtacentromeric movement and/or acrocentric exchanges. BAGE family is composed of expressed genes that map to the juxtacentromeric regions of chromosomes 13 and 21 and of unexpressed gene fragments that scattered in the juxtacentromeric regions of several chromosomes, including chromosomes 9, 13, 18 and 21.,similarity:Belongs to the BAGE family.,tissue specificity:Not expressed in normal tissues except in testis. Expressed in 22% of melanomas, in bladder and lung carcinomas.,tissue specificity:Not expressed in normal tissues except in testis. Expressed in melanoma, bladder and lung carcinomas.,

Validation Data



Immunohistochemistry analysis of paraffin-embedded human testis, using BAGE2 Antibody. The picture on the right is blocked with the synthesized peptide.

Contact information

Orders: order@immunoway.com
Support: tech@immunoway.com
Telephone: 877-594-3616 (Toll Free), 408-747-0185
Website: <http://www.immunoway.com>
Address: 2200 Ringwood Ave San Jose, CA 95131 USA



Please scan the QR code to access additional product information:
BAGE2 Rabbit pAb