

## AZI1 Rabbit pAb

CatalogNo: YT0428

### Key Features

#### Host Species

- Rabbit

#### Reactivity

- Human, Mouse

#### Applications

- WB, IHC, IF, ELISA

#### MW

- 130kD (Observed)

#### Isotype

- IgG

### Recommended Dilution Ratios

**WB 1:500-1:2000**

**IHC 1:100-1:300**

**ELISA 1:40000**

**IF 1:50-200**

### Storage

#### Storage\*

-15°C to -25°C/1 year (Do not lower than -25°C)

#### Formulation

Liquid in PBS containing 50% glycerol, 0.5% BSA and 0.02% sodium azide.

### Basic Information

#### Clonality

Polyclonal

### Immunogen Information

#### Immunogen

The antiserum was produced against synthesized peptide derived from human AZI1. AA range: 311-360

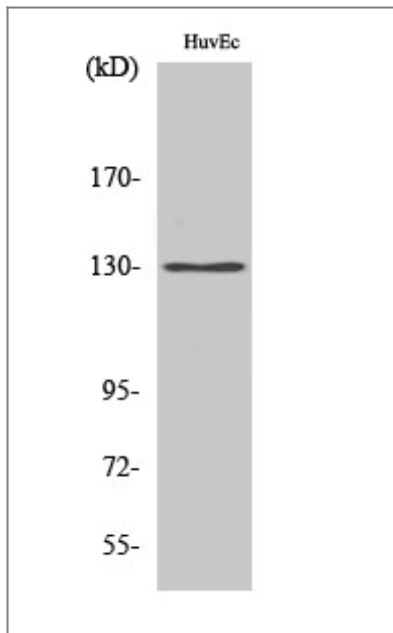
#### Specificity

AZI1 Polyclonal Antibody detects endogenous levels of AZI1 protein.

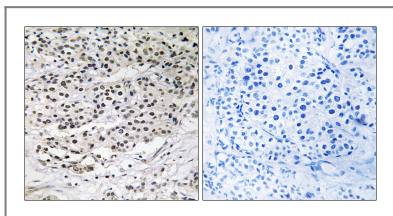
### Target Information

Gene name	AZI1		
Protein Name	5-azacytidine-induced protein 1		
	Organism	Gene ID	UniProt ID
	Human	<a href="#">22994</a> ;	<a href="#">Q9UPN4</a> ;
	Mouse		<a href="#">Q62036</a> ;
Cellular Localization	<p>Cytoplasm, cytoskeleton, microtubule organizing center, centrosome . Cytoplasm, cytoskeleton, microtubule organizing center, centrosome, centriolar satellite . Cytoplasm, cytoskeleton, microtubule organizing center, centrosome, centriole . Cytoplasm, cytoskeleton, cilium basal body. Cytoplasmic vesicle, secretory vesicle, acrosome . Colocalized with pericentriolar material protein PCM1 at centriolar satellites. During spermiogenesis, becomes enriched with nephrocystin NPHP1 at the transition zone, a structure at the base of the ciliary axoneme important for regulating traffic into the ciliary compartment. Traffics towards and away from the centrosome/basal body and the transition zone of the ciliary axoneme in a microtubule-dependent manner. Localized at the Golgi-derived acrosome and the centrosome-containing head-tail coupling apparatus (HTCA) (By similarity). Ubiquitinated form is sequestered and colocalized with BBS4, CEP290, PCM1 and PCNT at centriolar satellites in proliferating cells. Colocalized with the pericentriolar material protein PCM1 at centrosome. Traffics towards and away from centriolar satellites and centrosome in a microtubule- and dynein-dependent manner in interphase cells. Displaced from centriolar satellites but still remains associated with the centrosome in response to cellular stress, such as ultraviolet light (UV) radiation or heat shock, in a process that requires p38 MAPK signaling (PubMed:26616734). .</p>		
Tissue specificity	Brain,Epithelium,Lung,		
Function	<p>Caution:The sequence shown here is derived from an Ensembl automatic analysis pipeline and should be considered as preliminary data.,Function:May play a role in spermatogenesis.,PTM:Phosphorylated upon DNA damage, probably by ATM or ATR.,similarity:Contains 1 IQ domain.,</p>		

| Validation Data



Western Blot analysis of various cells using AZI1 Polyclonal Antibody



Immunohistochemistry analysis of paraffin-embedded human breast carcinoma tissue, using AZI1 Antibody. The picture on the right is blocked with the synthesized peptide.

## Contact information

Orders: [order@immunoway.com](mailto:order@immunoway.com)  
 Support: [tech@immunoway.com](mailto:tech@immunoway.com)  
 Telephone: 877-594-3616 (Toll Free), 408-747-0185  
 Website: <http://www.immunoway.com>  
 Address: 2200 Ringwood Ave San Jose, CA 95131 USA



Please scan the QR code  
 to access additional  
 product information:  
**AZI1 Rabbit pAb**

For Research Use Only. Not for Use in Diagnostic Procedures.

[Antibody](#) | [ELISA Kits](#) | [Protein](#) | [Reagents](#)