

## ATF-6 $\beta$ Rabbit pAb

CatalogNo: YT0389

### Key Features

#### Host Species

- Rabbit

#### Reactivity

- Human, Mouse

#### Applications

- WB, IHC, IF, ELISA

#### MW

- 90kD (Observed)

#### Isotype

- IgG

### Recommended Dilution Ratios

**WB 1:500-1:2000**

**ELISA 1:20000**

**IF 1:50-200**

### Storage

**Storage\*** -15°C to -25°C/1 year (Do not lower than -25°C)

**Formulation** Liquid in PBS containing 50% glycerol, 0.5% BSA and 0.02% sodium azide.

### Basic Information

**Clonality** Polyclonal

### Immunogen Information

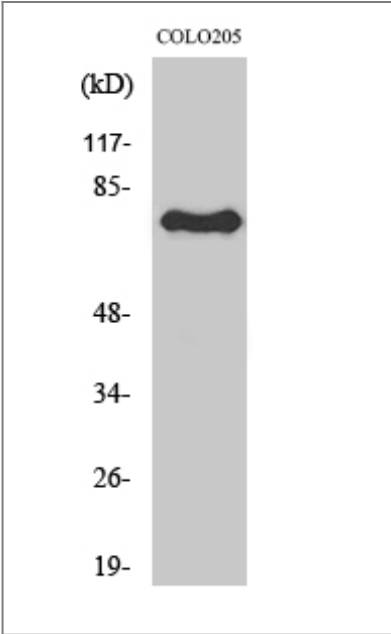
**Immunogen** The antiserum was produced against synthesized peptide derived from human ATF6B. AA range: 401-450

**Specificity** ATF-6 $\beta$  Polyclonal Antibody detects endogenous levels of ATF-6 $\beta$  protein.

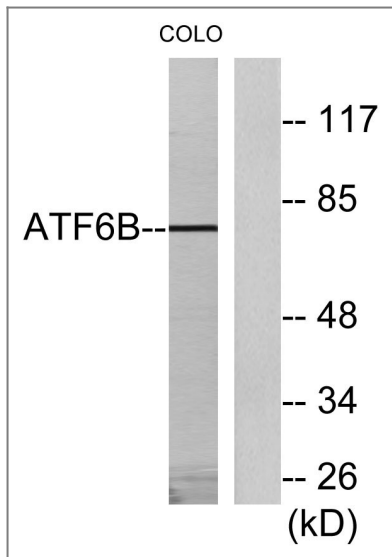
### Target Information

Gene name	ATF6B		
Protein Name	Cyclic AMP-dependent transcription factor ATF-6 beta		
	Organism	Gene ID	UniProt ID
	Human	<a href="#">1388</a> ;	<a href="#">Q99941</a> ;
	Mouse		<a href="#">O35451</a> ;
Cellular Localization	Endoplasmic reticulum membrane ; Single-pass type II membrane protein .; [Processed cyclic AMP-dependent transcription factor ATF-6 beta]: Nucleus . Under ER stress the cleaved N-terminal cytoplasmic domain translocates into the nucleus. .		
Tissue specificity	Ubiquitous.		
Function	Domain:The basic domain functions as a nuclear localization signal.,Domain:The basic leucine-zipper domain is sufficient for association with the NF-Y trimer and binding to ERSE.,Function:Transcriptional factor that acts in the unfolded protein response (UPR) pathway by activating UPR target genes induced during ER stress. Binds DNA on the 5'-CCAC[GA]-3' half of the ER stress response element (ERSE) (5'-CCAATN(9)CCAC[GA]-3') when NF-Y is bound to ERSE.,PTM:During unfolded protein response an approximative 60 kDa fragment containing the cytoplasmic transcription factor domain is released by proteolysis. The cleavage is probably performed sequentially by site-1 and site-2 proteases.,PTM:N-glycosylated.,similarity:Belongs to the bZIP family.,similarity:Belongs to the bZIP family. ATF subfamily.,similarity:Contains 1 bZIP domain.,subcellular location:Under ER stress the cleaved N-terminal cytoplasmic domain translocates into the nucleus.,subunit:Homodimer and heterodimer with ATF6-alpha. The dimer interacts with the nuclear transcription factor Y (NF-Y) trimer through direct binding to NF-Y subunit C (NF-YC).,tissue specificity:Ubiquitous.,		

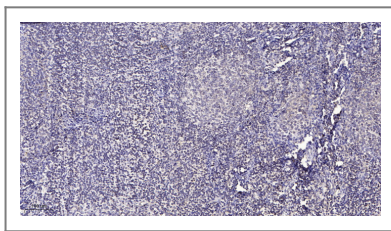
| Validation Data



Western Blot analysis of various cells using ATF-6β Polyclonal Antibody



Western blot analysis of lysates from COLO205 cells, using ATF6B Antibody. The lane on the right is blocked with the synthesized peptide.



Immunohistochemical analysis of paraffin-embedded human tonsil. 1, Antibody was diluted at 1:200(4° overnight). 2, Tris-EDTA,pH9.0 was used for antigen retrieval. 3,Secondary antibody was diluted at 1:200(room temperature, 30min).

## Contact information

Orders: [order@immunoway.com](mailto:order@immunoway.com)  
 Support: [tech@immunoway.com](mailto:tech@immunoway.com)  
 Telephone: 877-594-3616 (Toll Free), 408-747-0185  
 Website: <http://www.immunoway.com>  
 Address: 2200 Ringwood Ave San Jose, CA 95131 USA



Please scan the QR code to access additional product information:  
**ATF-6 $\beta$  Rabbit pAb**

For Research Use Only. Not for Use in Diagnostic Procedures.

[Antibody](#) | [ELISA Kits](#) | [Protein](#) | [Reagents](#)