

AT1 Rabbit pAb

CatalogNo: YT0372

Key Features

Host Species

- Rabbit

Reactivity

- Human, Mouse, Rat

Applications

- WB, IHC, IF, ELISA

MW

- 41kD (Observed)

Isotype

- IgG

Recommended Dilution Ratios

WB 1:500-1:2000

IHC 1:100-1:300

IF 1:200-1:1000

ELISA 1:10000

Not yet tested in other applications.

Storage

Storage*

-15°C to -25°C/1 year (Do not lower than -25°C)

Formulation

Liquid in PBS containing 50% glycerol, 0.5% BSA and 0.02% sodium azide.

Basic Information

Clonality

Polyclonal

Immunogen Information

Immunogen

The antiserum was produced against synthesized peptide derived from human AGTR1. AA range: 101-150

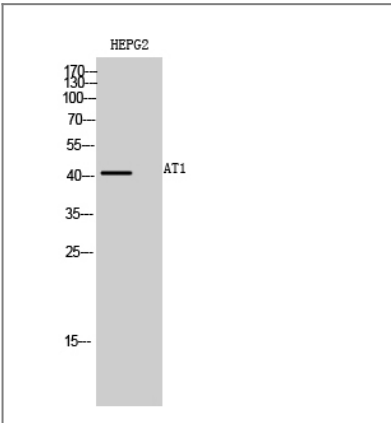
Specificity

AT1 Polyclonal Antibody detects endogenous levels of AT1 protein.

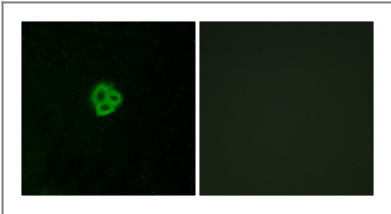
Target Information

Gene name	AGTR1		
Protein Name	Type-1 angiotensin II receptor		
	Organism	Gene ID	UniProt ID
	Human	185 ;	P30556 ;
	Rat	24180 ;	P25095 ;
Cellular Localization	Cell membrane ; Multi-pass membrane protein .		
Tissue specificity	Liver, lung, adrenal and adrenocortical adenomas.		
Function	Disease:Defects in AGTR1 are a cause of renal tubular dysgenesis (RTD) [MIM:267430]. RTD is an autosomal recessive severe disorder of renal tubular development characterized by persistent fetal anuria and perinatal death, probably due to pulmonary hypoplasia from early-onset oligohydramnios (the Potter phenotype).,Function:Receptor for angiotensin II. Mediates its action by association with G proteins that activate a phosphatidylinositol-calcium second messenger system.,online information:Angiotensin receptor entry,online information:The Singapore human mutation and polymorphism database,PTM:C-terminal Ser or Thr residues may be phosphorylated.,similarity:Belongs to the G-protein coupled receptor 1 family.,tissue specificity:Liver, lung, adrenal and adrenocortical adenomas.,		

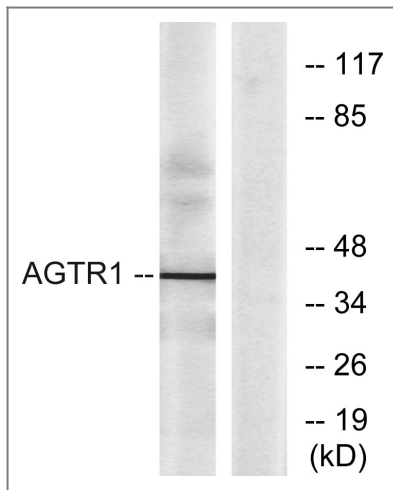
Validation Data



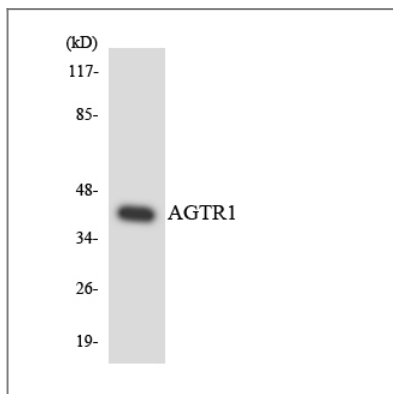
Western Blot analysis of HEPG2 cells using AT1 Polyclonal Antibody diluted at 1:500



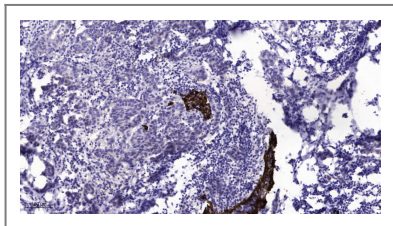
Immunofluorescence analysis of MCF7 cells, using AGTR1 Antibody. The picture on the right is blocked with the synthesized peptide.



Western blot analysis of lysates from K562 cells, using AGTR1 Antibody. The lane on the right is blocked with the synthesized peptide.



Western blot analysis of the lysates from HeLa cells using AGTR1 antibody.



Immunohistochemical analysis of paraffin-embedded human Breast cancer. 1, Antibody was diluted at 1:200(4° overnight). 2, Tris-EDTA,pH9.0 was used for antigen retrieval. 3,Secondary antibody was diluted at 1:200(room temperature, 45min).

Contact information

Orders: order@immunoway.com
 Support: tech@immunoway.com
 Telephone: 877-594-3616 (Toll Free), 408-747-0185
 Website: <http://www.immunoway.com>
 Address: 2200 Ringwood Ave San Jose, CA 95131 USA



Please scan the QR code to access additional product information:
AT1 Rabbit pAb