

## AR-β3 Rabbit pAb

CatalogNo: YT0363

### | Key Features

#### Host Species

- Rabbit

#### Reactivity

- Human, Mouse, Rat

#### Applications

- WB, IF, ELISA

#### MW

- 36kD (Observed)

#### Isotype

- IgG

### | Recommended Dilution Ratios

**WB 1:500-2000**

**IF 1:100-300**

**ELISA 1:5000-20000**

**Not yet tested in other applications.**

### | Storage

#### Storage\*

-15°C to -25°C/1 year (Do not lower than -25°C)

#### Formulation

Liquid in PBS containing 50% glycerol, 0.5% BSA and 0.02% sodium azide.

### | Basic Information

#### Clonality

Polyclonal

### | Immunogen Information

#### Immunogen

The antiserum was produced against synthesized peptide derived from human ADRB3. AA range: 250-299

#### Specificity

AR-β3 Polyclonal Antibody detects endogenous levels of AR-β3 protein.

### | Target Information

**Gene name** ADRB3

**Protein Name** Beta-3 adrenergic receptor

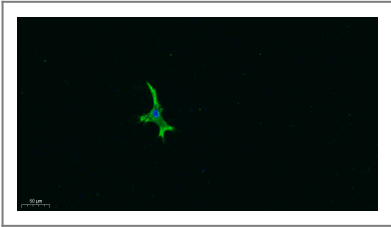
Organism	Gene ID	UniProt ID
Human	<a href="#">155</a> ;	<a href="#">P13945</a> ;
Mouse	<a href="#">11556</a> ;	<a href="#">P25962</a> ;
Rat	<a href="#">25645</a> ;	<a href="#">P26255</a> ;

**Cellular Localization** Cell membrane; Multi-pass membrane protein.

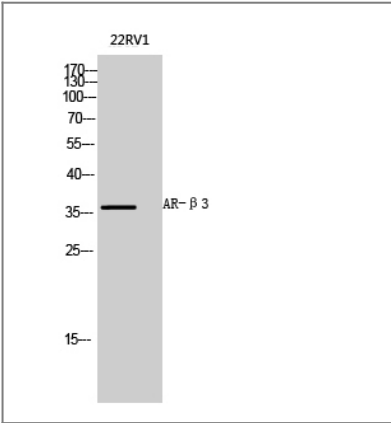
**Tissue specificity** Expressed mainly in adipose tissues.

**Function** Function:Beta-adrenergic receptors mediate the catecholamine-induced activation of adenylate cyclase through the action of G proteins. Beta-3 is involved in the regulation of lipolysis and thermogenesis.,polymorphism:The variant Arg-64 seems to be associated with weight gain (obesity) and to is also associated with susceptibility to non-insulin-dependent diabetes mellitus (NIDDM).,similarity:Belongs to the G-protein coupled receptor 1 family.,tissue specificity:Expressed mainly in adipose tissues.,

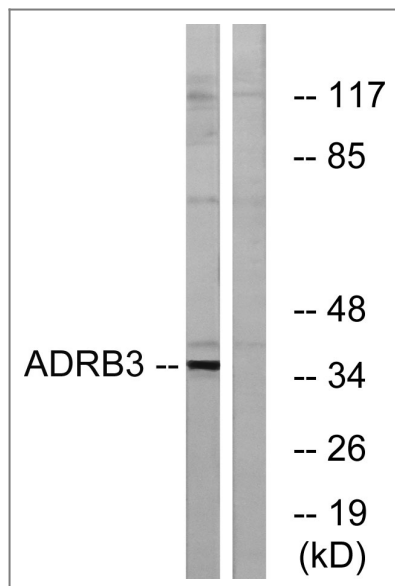
## Validation Data



Immunofluorescence analysis of A549. 1,primary Antibody was diluted at 1:200(4°C overnight). 2, Goat Anti Rabbit IgG (H&L) - Alexa Fluor 488 Secondary antibody was diluted at 1:1000(room temperature, 50min).3, DAPI(blue) 10min.



Western Blot analysis of 22RV1 cells using AR-β3 Polyclonal Antibody diluted at 1:1000



Western blot analysis of lysates from K562 cells, using ADRB3 Antibody. The lane on the right is blocked with the synthesized peptide.

## Contact information

Orders: [order@immunoway.com](mailto:order@immunoway.com)  
 Support: [tech@immunoway.com](mailto:tech@immunoway.com)  
 Telephone: 877-594-3616 (Toll Free), 408-747-0185  
 Website: <http://www.immunoway.com>  
 Address: 2200 Ringwood Ave San Jose, CA 95131 USA



Please scan the QR code to access additional product information:  
**AR-β3 Rabbit pAb**

For Research Use Only. Not for Use in Diagnostic Procedures.

[Antibody](#) | [ELISA Kits](#) | [Protein](#) | [Reagents](#)