

## AR- $\alpha$ 1A Rabbit pAb

CatalogNo: YT0355

### Key Features

#### Host Species

- Rabbit

#### Reactivity

- Human,Rat,Mouse,

#### Applications

- WB,IHC,IF,ELISA

#### MW

- 51kD (Observed)

#### Isotype

- IgG

### Recommended Dilution Ratios

**WB 1:500-1:2000**

**IHC 1:100-1:300**

**IF 1:200-1:1000**

**ELISA 1:10000**

**Not yet tested in other applications.**

### Storage

#### Storage\*

-15°C to -25°C/1 year(Do not lower than -25°C)

#### Formulation

Liquid in PBS containing 50% glycerol, 0.5% BSA and 0.02% sodium azide.

### Basic Information

#### Clonality

Polyclonal

### Immunogen Information

#### Immunogen

The antiserum was produced against synthesized peptide derived from human ADRA1A. AA range:341-390

#### Specificity

AR- $\alpha$ 1A Polyclonal Antibody detects endogenous levels of AR- $\alpha$ 1A protein.

## | Target Information

**Gene name** ADRA1A

**Protein Name** Alpha-1A adrenergic receptor

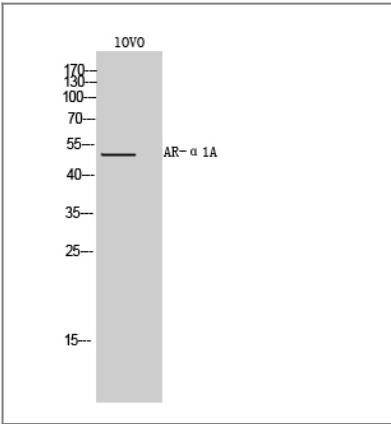
Organism	Gene ID	UniProt ID
Human	<a href="#">148;</a>	<a href="#">P35348;</a>
Mouse		<a href="#">P97718;</a>

**Cellular Localization** Nucleus membrane; Multi-pass membrane protein. Cell membrane ; Multi-pass membrane protein . Cytoplasm . Membrane, caveola . Location at the nuclear membrane facilitates heterooligomerization and regulates ERK-mediated signaling in cardiac myocytes. Colocalizes with GNAQ, PLCB1 as well as LAP2 at the nuclear membrane of cardiac myocytes.

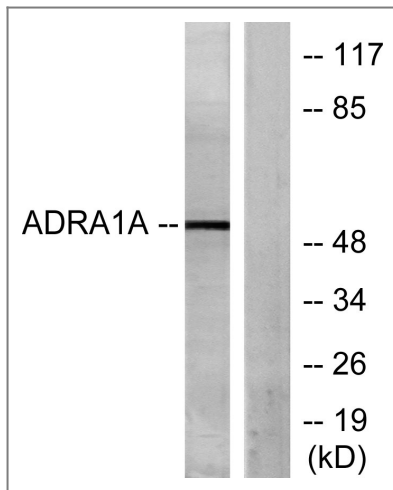
**Tissue specificity** Expressed in heart, brain, liver and prostate, but not in kidney, lung, adrenal, aorta and pituitary. Within the prostate, expressed in the apex, base, periurethral and lateral lobe. Isoform 4 is the most abundant isoform expressed in the prostate with high levels also detected in liver and heart.

**Function** Function:This alpha-adrenergic receptor mediates its action by association with G proteins that activate a phosphatidylinositol-calcium second messenger system. Its effect is mediated by G(q) and G(11) proteins.,PTM:Carboxyl-terminal Ser or Thr residues may be phosphorylated.,similarity:Belongs to the G-protein coupled receptor 1 family.,tissue specificity:Heart, brain, liver and prostate, but not in kidney, lung, adrenal, aorta and pituitary. Isoform 4 is the most abundant isoform expressed in the prostate with high levels also detected in liver and heart.,

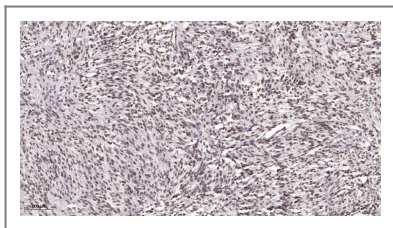
## | Validation Data



Western Blot analysis of IOVO cells using AR-α1A Polyclonal Antibody



Western blot analysis of lysates from IOVO cells, using ADRA1A Antibody. The lane on the right is blocked with the synthesized peptide.



Immunohistochemical analysis of paraffin-embedded human Small intestinal stromal tumor. 1, Tris-EDTA, pH 9.0 was used for antigen retrieval. 2 Antibody was diluted at 1:200 (4° overnight). 3, Secondary antibody was diluted at 1:200 (room temperature, 45 min).

## Contact information

Orders: [order@immunoway.com](mailto:order@immunoway.com)  
 Support: [tech@immunoway.com](mailto:tech@immunoway.com)  
 Telephone: 877-594-3616 (Toll Free), 408-747-0185  
 Website: <http://www.immunoway.com>  
 Address: 2200 Ringwood Ave San Jose, CA 95131 USA



Please scan the QR code to access additional product information:  
**AR-α1A Rabbit pAb**

For Research Use Only. Not for Use in Diagnostic Procedures.

[Antibody](#) | [ELISA Kits](#) | [Protein](#) | [Reagents](#)