

## AR- $\alpha$ 1A Rabbit pAb

CatalogNo: YT0354

### Key Features

#### Host Species

- Rabbit

#### Reactivity

- Human, Mouse, Rat

#### Applications

- WB, IF, ELISA

#### MW

- 51kD (Observed)

#### Isotype

- IgG

### Recommended Dilution Ratios

**WB 1:500-1:2000**

**IF 1:200-1:1000**

**ELISA 1:10000**

**Not yet tested in other applications.**

### Storage

#### Storage\*

-15°C to -25°C/1 year (Do not lower than -25°C)

#### Formulation

Liquid in PBS containing 50% glycerol, 0.5% BSA and 0.02% sodium azide.

### Basic Information

#### Clonality

Polyclonal

### Immunogen Information

#### Immunogen

The antiserum was produced against synthesized peptide derived from human ADRA1A. AA range:136-185

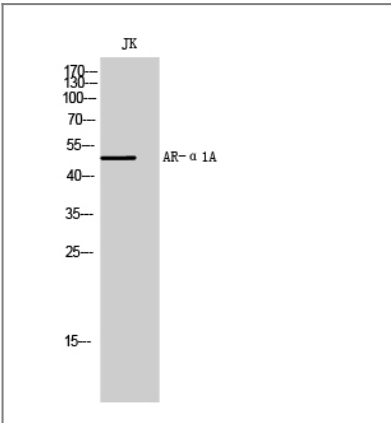
#### Specificity

AR- $\alpha$ 1A Polyclonal Antibody detects endogenous levels of AR- $\alpha$ 1A protein.

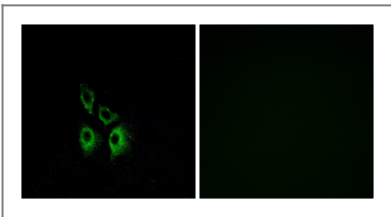
### Target Information

Gene name	ADRA1A		
Protein Name	Alpha-1A adrenergic receptor		
	Organism	Gene ID	UniProt ID
	Human	<a href="#">148</a> ;	<a href="#">P35348</a> ;
	Mouse	<a href="#">11549</a> ;	<a href="#">P97718</a> ;
	Rat	<a href="#">29412</a> ;	<a href="#">P43140</a> ;
Cellular Localization	Nucleus membrane; Multi-pass membrane protein. Cell membrane ; Multi-pass membrane protein . Cytoplasm . Membrane, caveola . Location at the nuclear membrane facilitates heterooligomerization and regulates ERK-mediated signaling in cardiac myocytes. Colocalizes with GNAQ, PLCB1 as well as LAP2 at the nuclear membrane of cardiac myocytes.		
Tissue specificity	Expressed in heart, brain, liver and prostate, but not in kidney, lung, adrenal, aorta and pituitary. Within the prostate, expressed in the apex, base, periurethral and lateral lobe. Isoform 4 is the most abundant isoform expressed in the prostate with high levels also detected in liver and heart.		
Function	Function:This alpha-adrenergic receptor mediates its action by association with G proteins that activate a phosphatidylinositol-calcium second messenger system. Its effect is mediated by G(q) and G(11) proteins.,PTM:Carboxyl-terminal Ser or Thr residues may be phosphorylated.,similarity:Belongs to the G-protein coupled receptor 1 family.,tissue specificity:Heart, brain, liver and prostate, but not in kidney, lung, adrenal, aorta and pituitary. Isoform 4 is the most abundant isoform expressed in the prostate with high levels also detected in liver and heart.,		

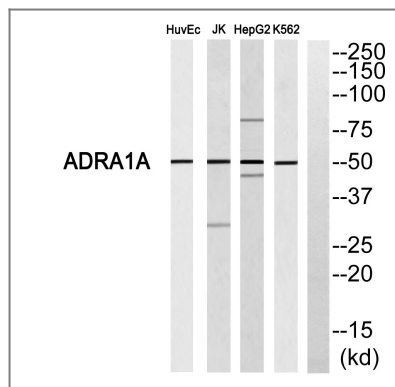
Validation Data



Western Blot analysis of JK cells using AR-α1A Polyclonal Antibody



Immunofluorescence analysis of A549 cells, using ADRA1A Antibody. The picture on the right is blocked with the synthesized peptide.



Western blot analysis of ADRA1A Antibody. The lane on the right is blocked with the ADRA1A peptide.

## Contact information

Orders: [order@immunoway.com](mailto:order@immunoway.com)  
 Support: [tech@immunoway.com](mailto:tech@immunoway.com)  
 Telephone: 877-594-3616 (Toll Free), 408-747-0185  
 Website: <http://www.immunoway.com>  
 Address: 2200 Ringwood Ave San Jose, CA 95131 USA



Please scan the QR code  
 to access additional  
 product information:  
**AR-α1A Rabbit pAb**

For Research Use Only. Not for Use in Diagnostic Procedures.

[Antibody](#) | [ELISA Kits](#) | [Protein](#) | [Reagents](#)